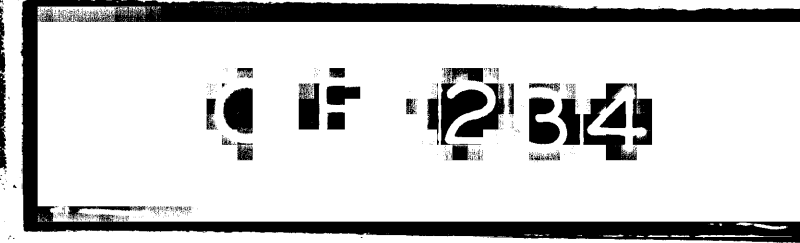
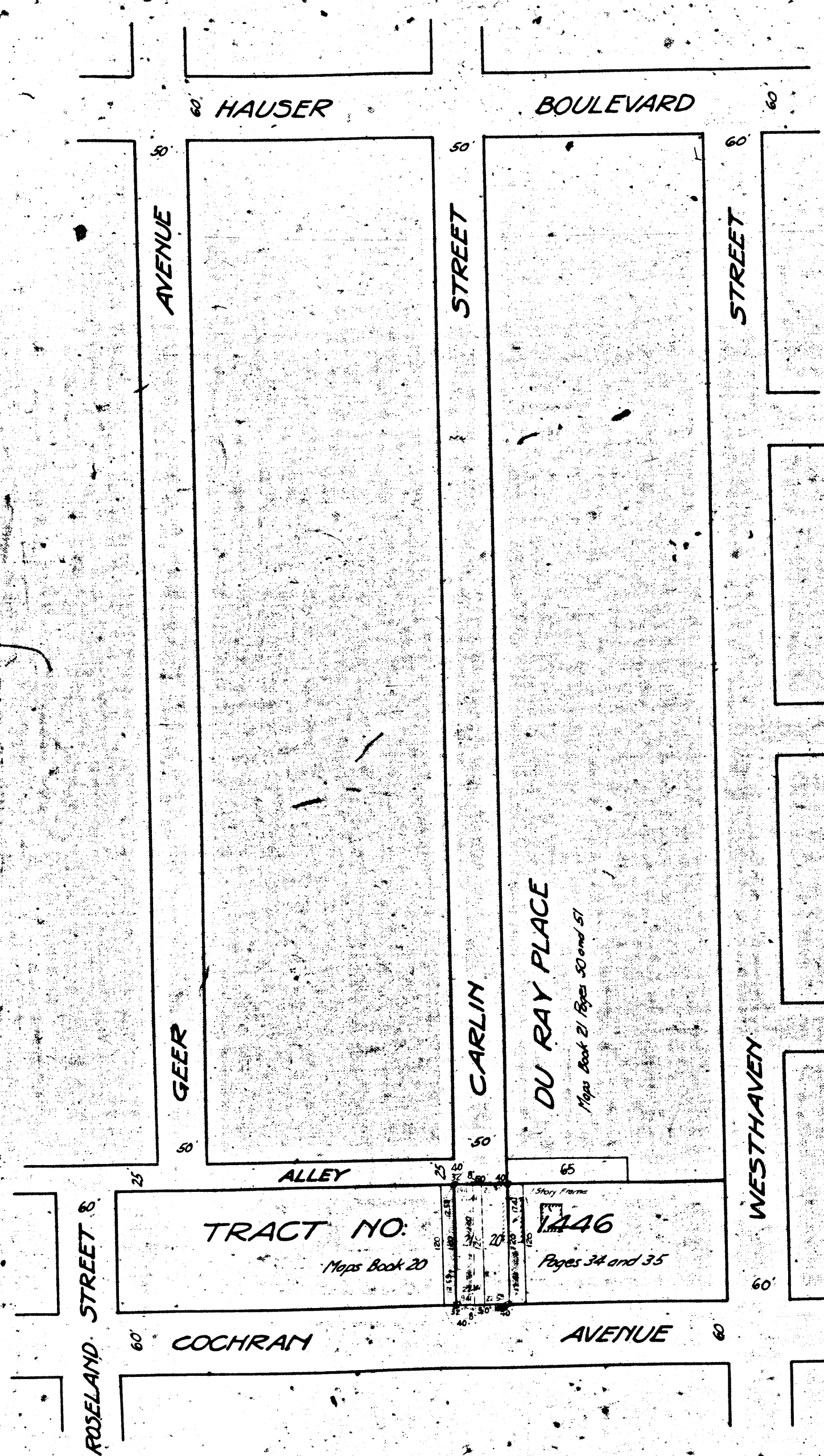


V-50



**MAP**  
 SHOWING THE LAND TO BE CONDEMNED  
 FOR THE OPENING AND EXTENDING OF  
**CARLIN STREET**  
 BETWEEN  
**COCHRAN AVENUE AND HAUSER BOULEVARD**  
 IN THE  
**CITY OF LOS ANGELES, CAL.**

IN ACCORDANCE WITH ORDINANCES NOS. 50149 AND 50119 (NEW SERIES)  
 H. A. VAN NORMAN CITY ENGINEER MARCH 1925  
 SCALE 1 INCH = 100 FEET

Note: Land to be condemned shown colored red  
 Broken lines and figures show property holdings  
 where they differ from recorded subdivisions

Superior Court Case No. 165602  
 Suit for Condemnation  
 Filed Mar 19, 1925  
 City of Los Angeles Plff.  
 Vs.

Edna Brown et al. Def

Pending A-2898, 1925  
 Intercutory decree rendered 10-23-25  
 Sh. 22  
 Pending May 1st 1926  
 Judgment Book 599-88

Final judgment in favor of Plaintiff  
 as per map, rendered July 9th 1926

D:54-143 O.R. 6016-262

8985-A