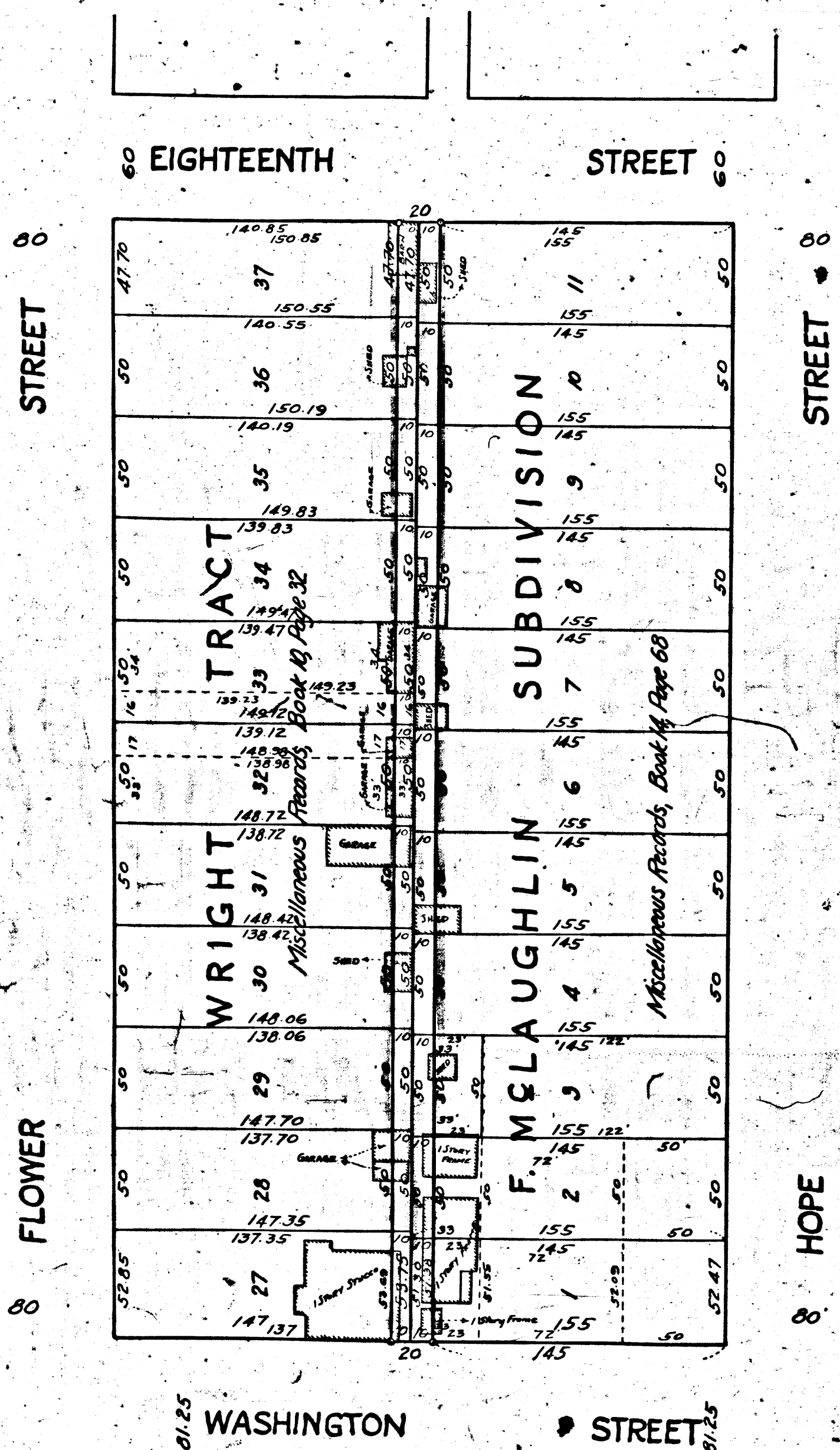


V-3000

CITY OF LOS ANGELES  
MISCELLANEOUS RECORDS



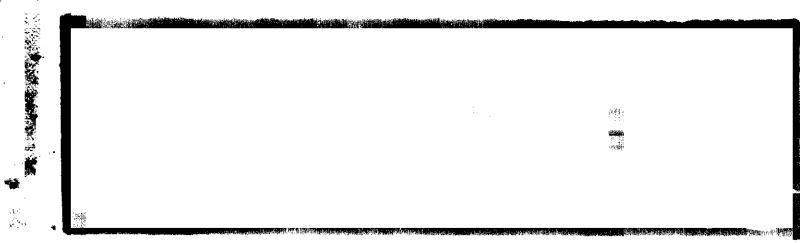
**MAP**  
 SHOWING THE LAND TO BE CONDEMNED  
 FOR THE OPENING OF  
**AN ALLEY**  
 FROM EIGHTEENTH STREET TO WASHINGTON STREET  
 Between  
 HOPE STREET AND FLOWER STREET  
 IN THE  
**CITY OF LOS ANGELES, CALIFORNIA.**  
 In Accordance with Ordinances Nos. 50194 and 51040 (New Series)  
 H. A. VAN NORMAN City Engineer MARCH 1925  
 Scale 1 inch = 50 Feet.

Note Land to be condemned shown colored red.  
 Dotted Lines and figures show holdings where  
 they differ from recorded Subdivisions.

Superior Court Case No. 166015  
 Suit for Condemnation  
 Filed Mar. 25<sup>th</sup> 1925  
 City of Los Angeles Pltff.  
 Vs.  
 Joseph R. Newlands et al Def.  
 Pending Ap. 6<sup>th</sup> 1925  
 Interlocutory decree rendered 3-5-26  
 Pending May 1<sup>st</sup> 1926  
 Judgment Book 605-286  
 Final judgment in favor of Pltff. as per  
 map, rendered March 3, 1927.  
 D:57-189 O.R. 6654-24

Sh 3

Alley established as Pembroke Lane Ord. 69322.



A-3002