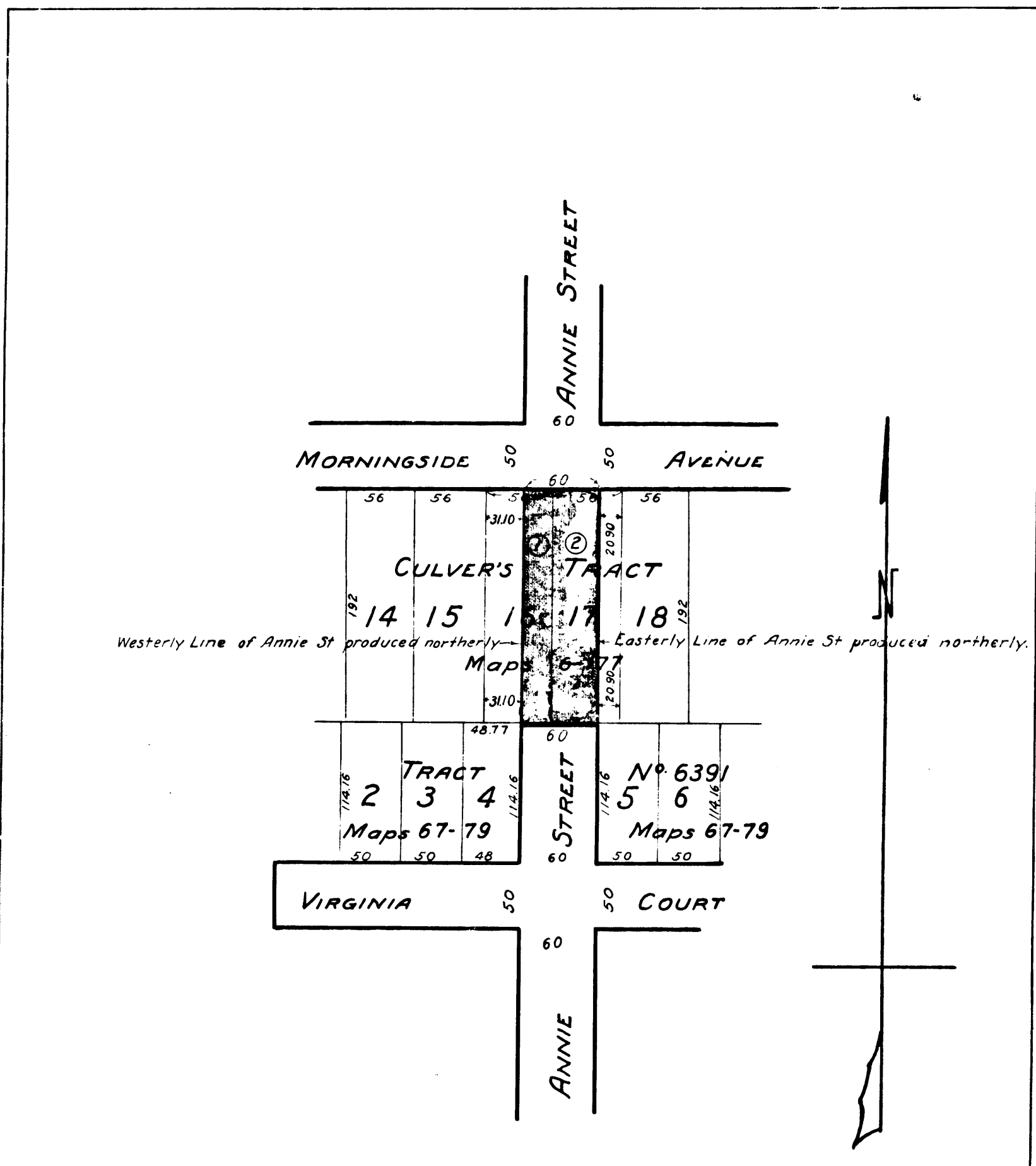


Superior Court Case No. 157387
 Suit for Condemnation
 Filed April 15, 1925
 City of Pasadena, Plff.
 vs.
 Harriet Mannin, et al, Def.
 Pending April 23, 1925
 Dismissed Sept. 4, 1925.

C.F. 1242-



NOTE :-
 SHADED PORTIONS SHOW LAND TO BE CONDEMNED.

EXHIBIT "C"

DRAWN BY <i>C. M. B.</i> CHECKED BY <i>[Signature]</i> FIELD BOOKS <i>[Signature]</i> DEPUTY CITY ENGINEER APPROVED <i>[Signature]</i> C. E. & S. OF STREETS	CITY OF PASADENA OFFICE OF CITY ENGINEER & SUPERINTENDENT OF STREETS OPENING AND EXTENDING ANNIE STREET FROM NLY LINE OF TRACT N° 6391 TO MORNINGSIDE AVE.	DATE MAR. 1925 SCALE 1" = 100' DRAWING NUMBER G-366
--	---	---