

MAP
 SHOWING THE LAND TO BE CONDEMNED
 FOR THE WIDENING OF
FRIES AVENUE
 BETWEEN
ANAHEIM STREET
 AND A POINT SIX HUNDRED FIFTY-ONE AND FORTY-EIGHT HUNDREDTHS FEET
 SOUTHERLY OF THE SOUTHERLY LINE OF "A" STREET
 IN THE
CITY OF LOS ANGELES, CAL.

Superior Court Case No. 155
 Suit for Condemnation
 Filed in the
 City of Los Angeles, Calif.
 Ernesto G. Carr, et al. vs.

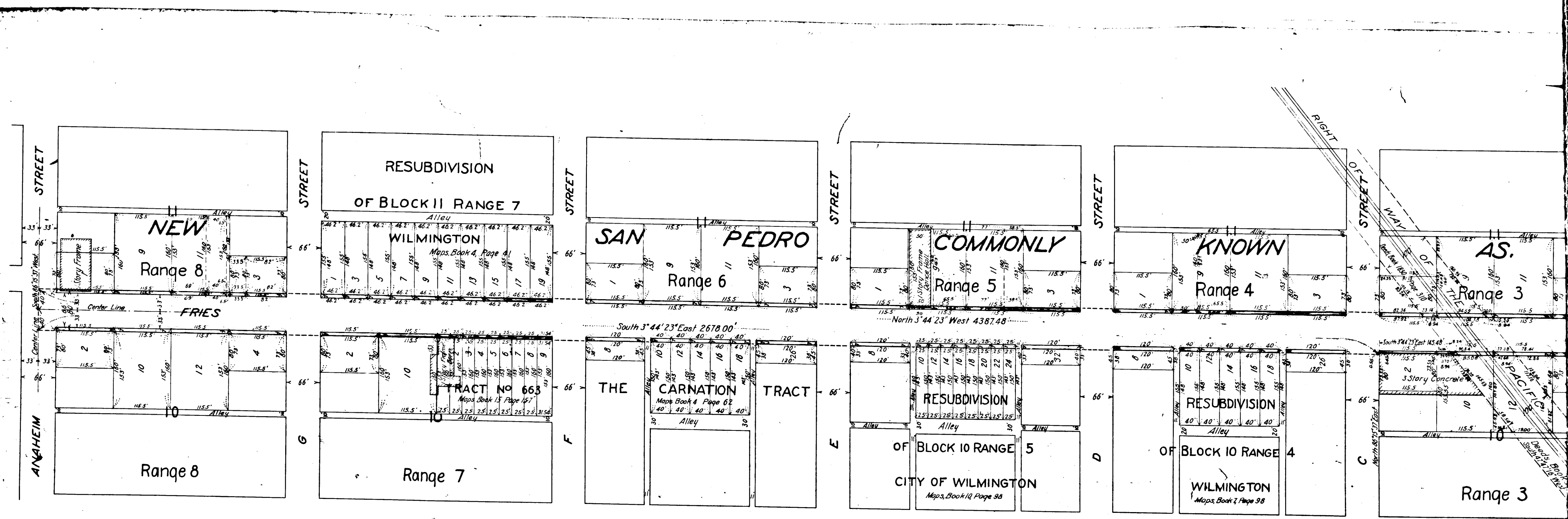
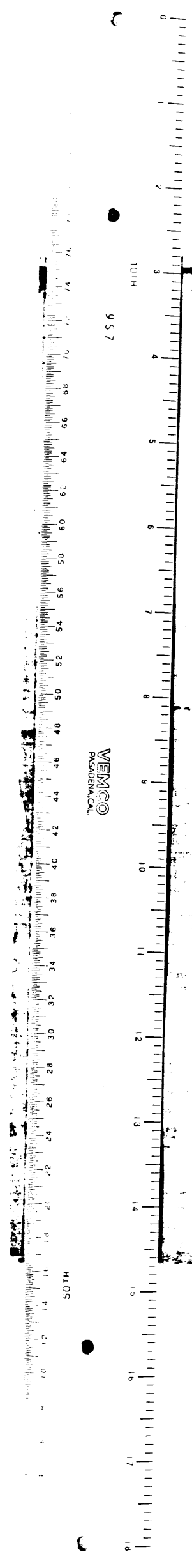
In accordance with Ordinances Nos. 39519 and 50261 (New Series)

H. A. VAN NORMAN, CITY ENGINEER. DECEMBER, 1924

Scale, 1 inch = 100 Feet.
 NOTE - Land to be condemned shown colored red.
 Broken lines and figures show where the holdings
 differ from the recorded subdivisions.

Pending May 1, 1926.
 Pending April 1, 1927.
 Interlocutory Judgment rendered June
 19th 1928 - Judg. Bl. 690-41
 Proceedings abandoned Oct. 4, 1929.

C.F. 1244 - A 999



12
C.F. 1244-