

COUNTY
STREET OPENING DISTRICT No. 18.
MAP OF
PROPOSED WIDENING
OF ATLANTIC AVE.
 BETWEEN
 FLORENCE AVE. & PATATA ST.
 SHOWING

THE EXTERIOR BOUNDARY OF THE DISTRICT TO BE ASSESSED THEREFOR UNDER THE PROVISIONS OF THE COUNTY STREET OPENING ACT OF 1923, APPROVED MAY 11, 1923.

SCALE 1" = 100' NOV. 1924

J.E. ROCKHOLD-COUNTY SURVEYOR

SUBMITTED BY:
Alfred Jones
 CHIEF DEPUTY

APPROVED BY:
J.E. Rockhold
 COUNTY SURVEYOR

APPROVED AS TO FORM
 EDWARD T. BISHOP-COUNTY COUNSEL
 BY *Edward T. Bishop*
 CHIEF DEPUTY

-LEGEND-
 DISTRICT BOUNDARY LINE
 LAND SOUGHT TO BE CONDEMNED COLORED RED

I HEREBY CERTIFY THAT THE BOARD OF SUPERVISORS OF LOS ANGELES COUNTY DID ON THE 17 DAY OF ~~Oct.~~ *Nov.* 1924, BY RESOLUTION DOUBLY APPROVE THE ACCOMPANYING MAP OF THE ASSESSMENT DISTRICT NO. 18 STREET OPENING DISTRICT NO. 18 OF THE COUNTY OF LOS ANGELES FOR THE WIDENING OF ATLANTIC AVE. L. F. LANPTON, COUNTY CLERK AND EX OFFICIO CLERK OF THE BOARD OF SUPERVISORS OF SAID COUNTY OF LOS ANGELES.
 BY *Mame R. Brady* DEPUTY

FILED DEC. 1, 1924 IN THE
 OFFICE OF THE COUNTY SURVEYOR
 OF LOS ANGELES COUNTY
 J. E. ROCKHOLD, COUNTY SURVEYOR
 BY *M. S. C. R.* DEPUTY

*Pending M. J. 1, 1926
 Case dismissed Jan. 15th 1927*

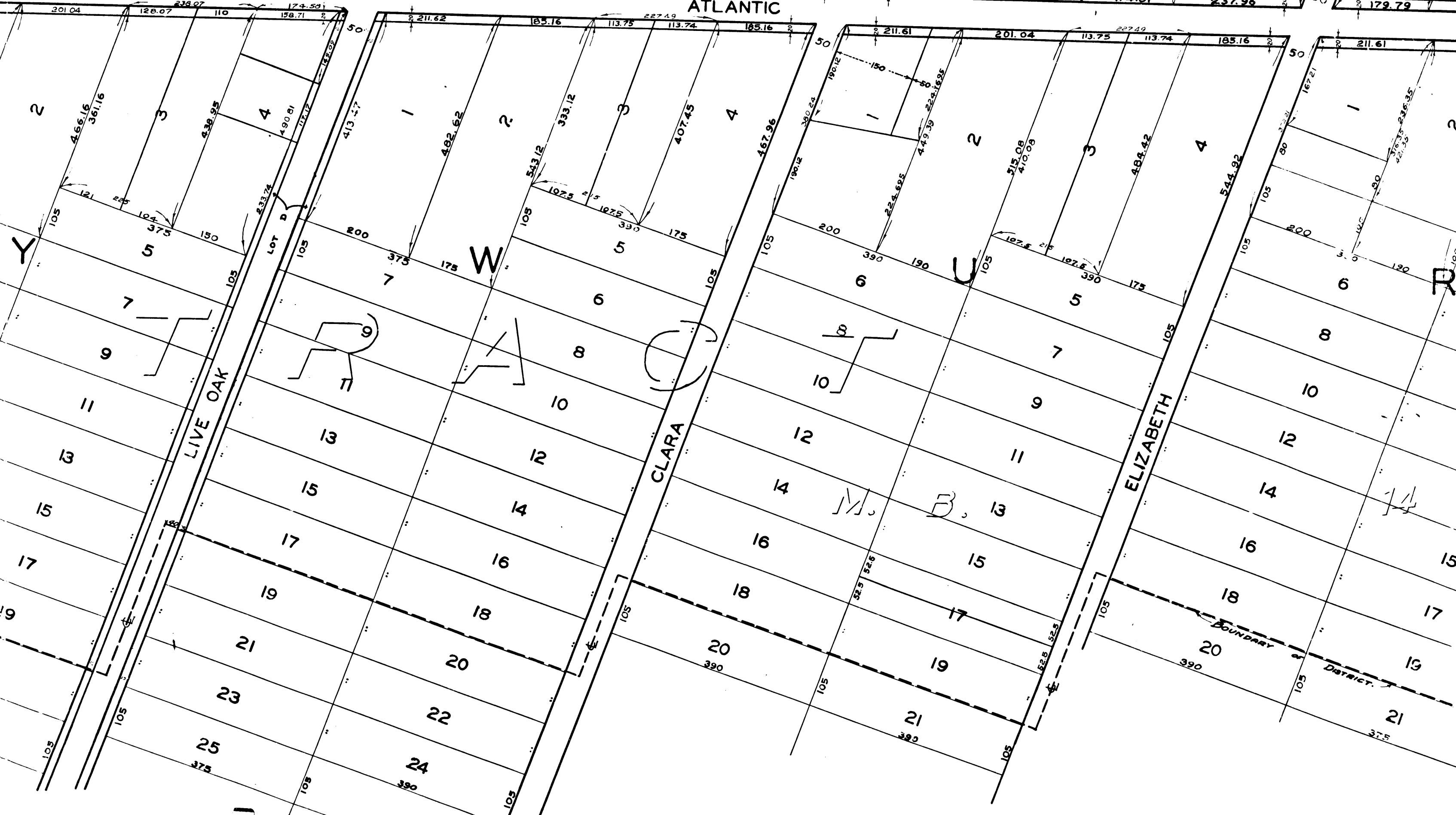
C.F. 1246 -

O. & W. No. 18.	
DRAWN BY R.J. Allen	Oct 1924
TRACED BY R.J. Allen	Oct. 1924
CHECKED BY J.H. Allen	Nov. 1924

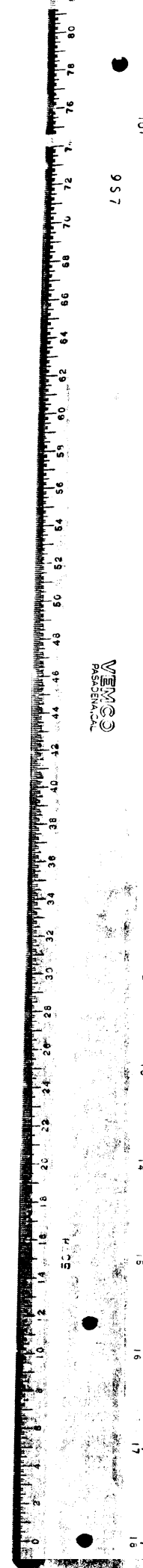


2

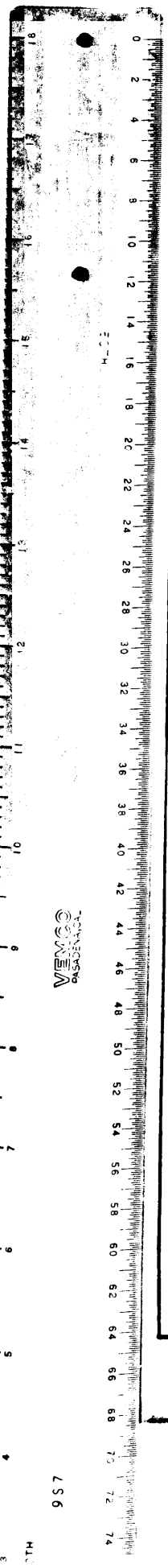
C.F. 1246 -



C.F. 1246 -

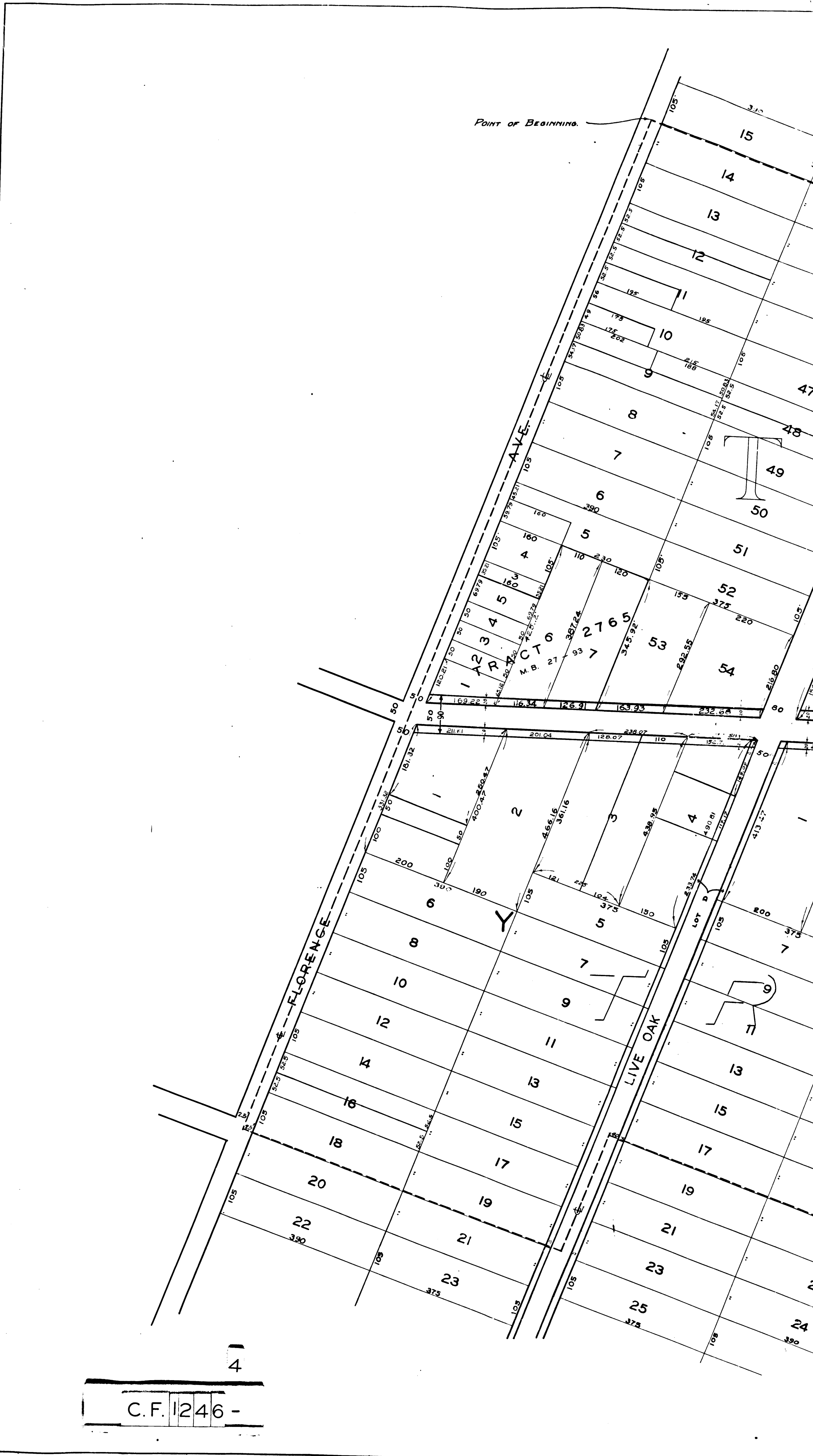


CONIA



VENGE

957



4

C.F. 1246 -