

Superior Court Case No. 160383
 Suit for Damages
 Filed June 1925
 County of Los Angeles, Plaintiff
 vs
 Hortense Rose Barber et al, Def.
 Pending May 1, 1926.
 Interlocutory judgment as per map,
 rendered June 24th 1926
 Judg. Ek. C27-85
 Pending Apr. 8th 1927
 Final judgement in favor of Plff as
 per map, rendered June 27th 1927.
 D: 60-215, O.R. 7006-232

SH-35
 COUNTY
STREET OPENING DISTRICT No 34
 MAP OF
**PROPOSED OPENING & EXTENDING
 OF MAPLE AVENUE**
 BETWEEN
CLARK AVE. & SOMERSET AVE.

SHOWING
 The exterior boundary of the District to be assessed therefor under
 the provisions of the County Street Opening Act of 1923, Approved May 11, 1923
 SCALE 1" = 100'
 JANUARY 1925
 J.E. ROCKHOLD - COUNTY SURVEYOR
 Submitted *Alfred Jones* Chief Deputy
 Approved *J.E. Rockhold* County Surveyor
 Approved as to form
 Edward T. Bishop - County Counsel
 by *Conrad S. Moulton* Chief Deputy

LEGEND:-
 District Boundary Line -----
 Land sought to be condemned colored red

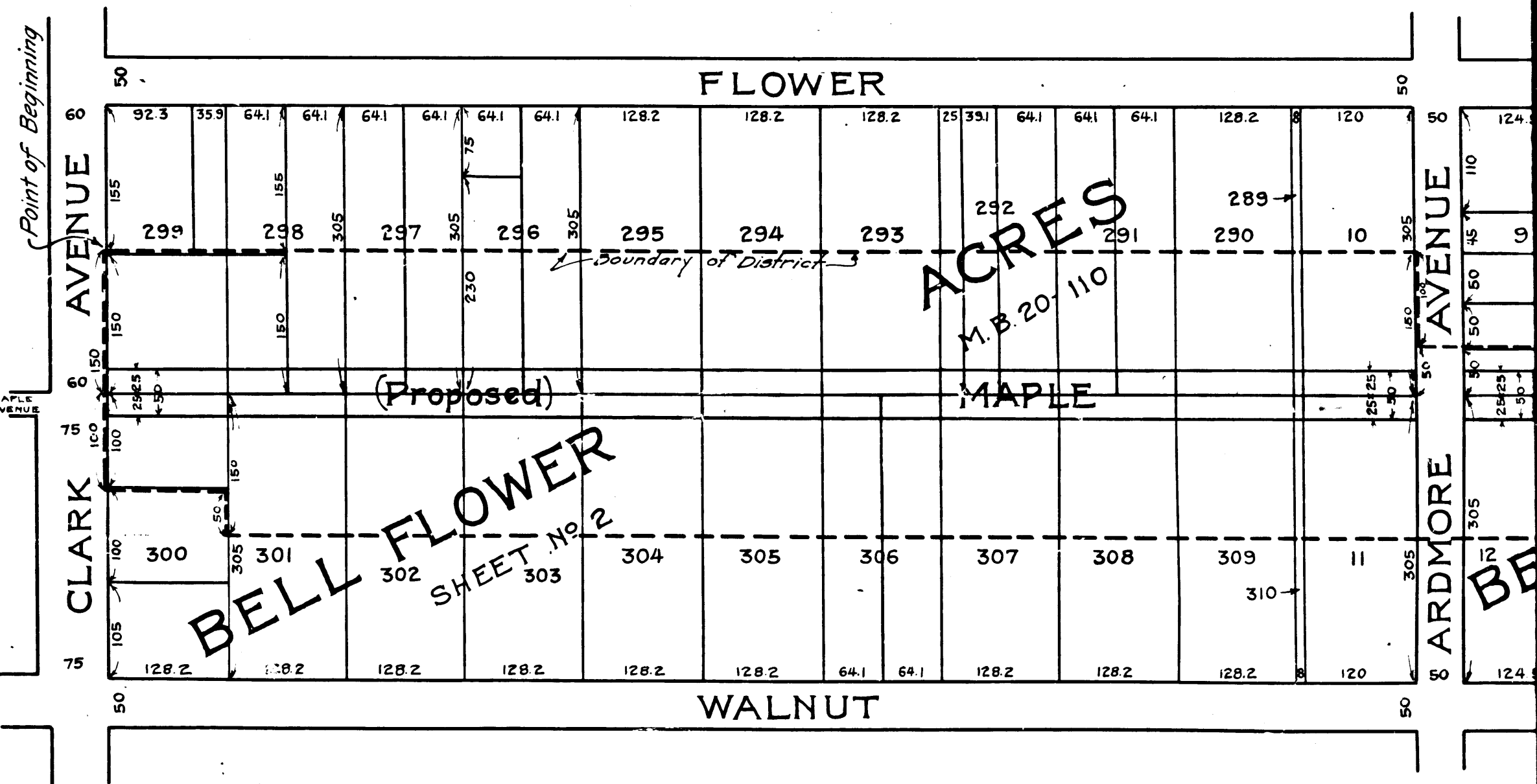
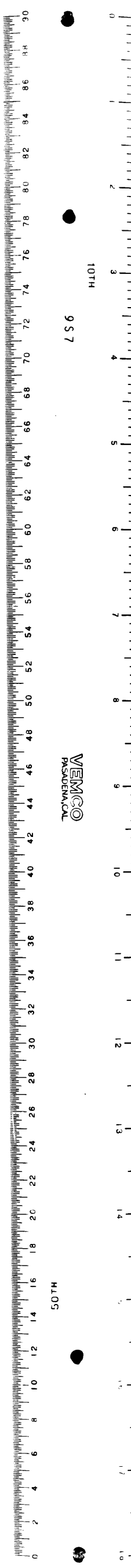
I hereby certify that the Board of Supervisors of Los Angeles
 County did, on the 2nd day of February, 1925 by resolution duly
 adopted approve the accompanying map of the assessment district
 of County Street Opening District No 34 of the County of Los Angeles
 for the opening and extending of Maple Avenue

Filed Feb. 7, 1925 in the
 office of the County Surveyor
 of Los Angeles County
 J.E. ROCKHOLD - COUNTY SURVEYOR
 by *J.E. Rockhold* Deputy

L.E. LAMPTON,
 COUNTY CLERK AND EX OFFICIO CLERK OF THE BOARD OF
 SUPERVISORS OF SAID COUNTY OF LOS ANGELES.
Thames R. Beatty
 Deputy

C.F. 1249 -

O. & W. No 34	
Drawn by E. Van Wert	Jan. 1925
Traced by E. Van Wert	Jan. 1925
Checked by Heskell	Jan. 1925



C.F. 1249 -