

1005-A

CITY ENGINEER'S OFFICE
CITY OF LOS ANGELES
PROPERTY OF THE

A-5001

MAP

SHOWING THE LAND TO BE CONDEMNED
FOR THE OPENING
OF AN

ALLEY

NORTHWESTERLY OF EZRA STREET
FROM THE
SOUTHWESTERLY LINE OF SIXTH STREET
TO THE
SOUTHEASTERLY PROLONGATION OF THE
SOUTHWESTERLY LINE OF INEZ STREET
IN THE
CITY OF LOS ANGELES, CAL.

IN ACCORDANCE WITH ORDINANCES NOS 50787 AND 51510 (NEW SERIES)

H. A. VAN NORMAN CITY ENGINEER

MARCH 1925

SCALE 1 INCH = 50 FEET

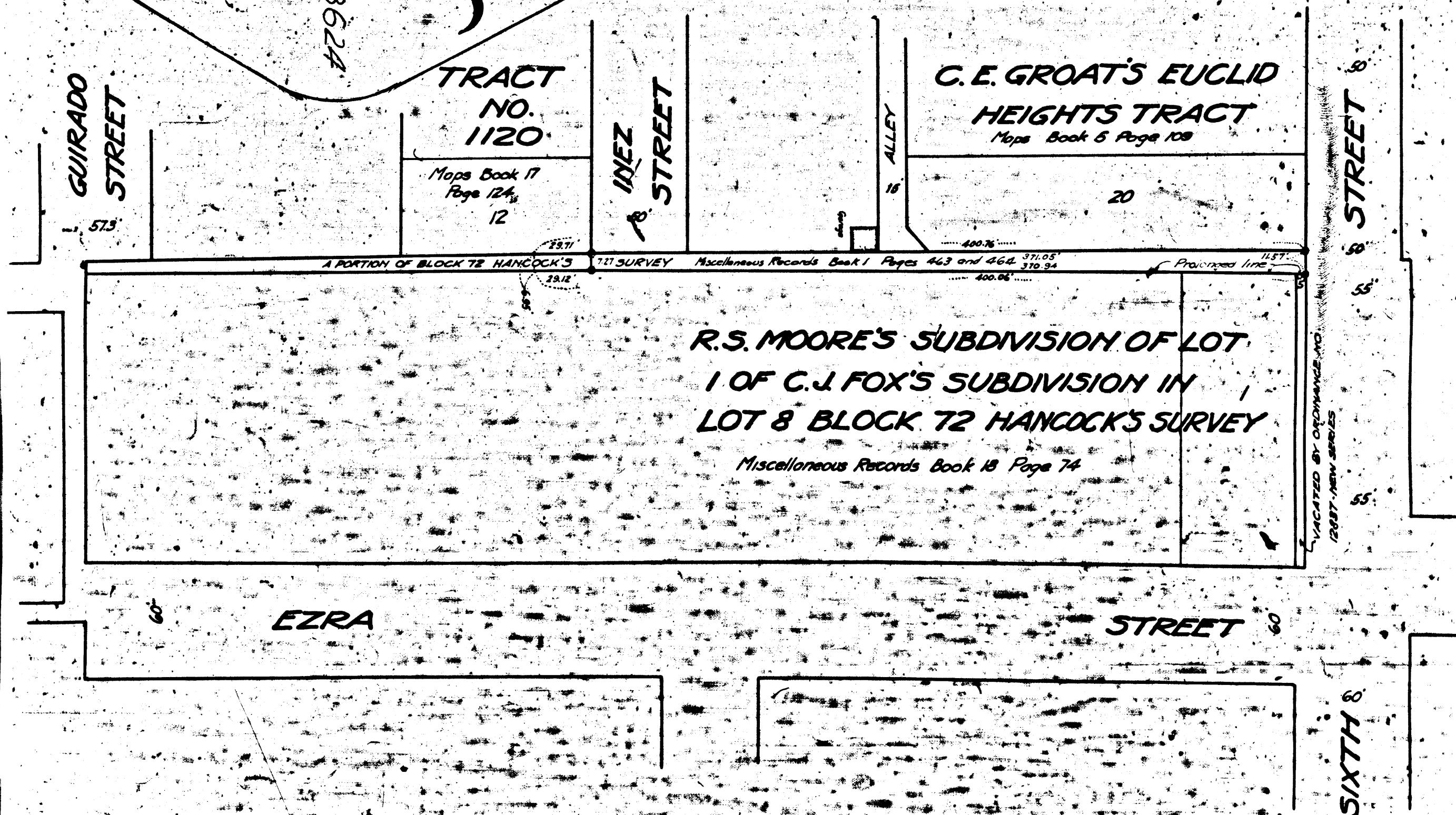
Note Land to be condemned shown colored red.

Broken lines and figures show holdings in cases where they differ from recorded subdivisions.

A-2391

Interlocutory judgment as per
map, rendered June 30th 1926
Judg. Bk. 611-9
Pending Apr. 8th 1927
Abandoned May 31st 1928

Superior Court Case No. 168624
Suit for Condemnation
Filed April 28, 1925
City of Los Angeles, Plaintiff,
vs
William J. Nensel, et al. Defendants
Pending May 1, 1926.



A-5001

CITY OF LOS ANGELES
PROPERTY OF THE