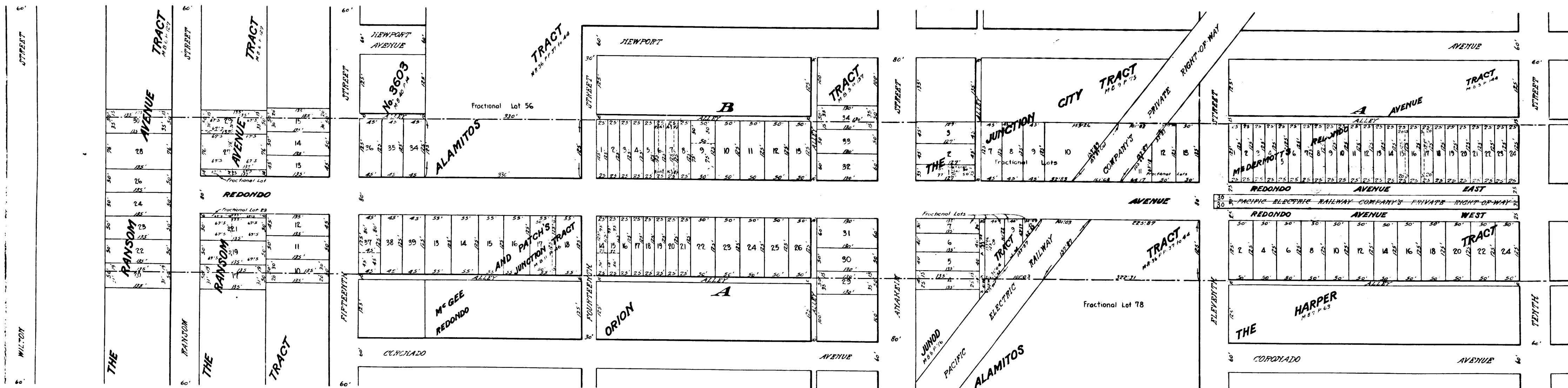
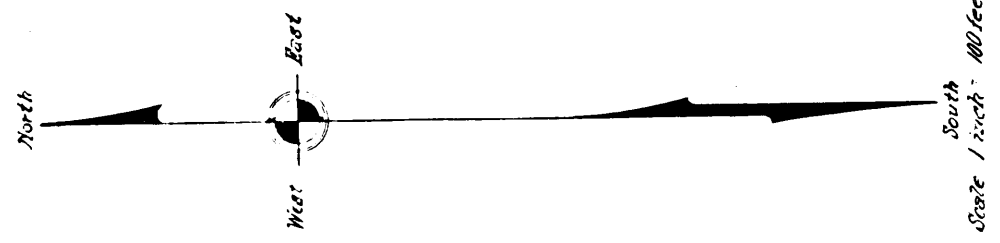
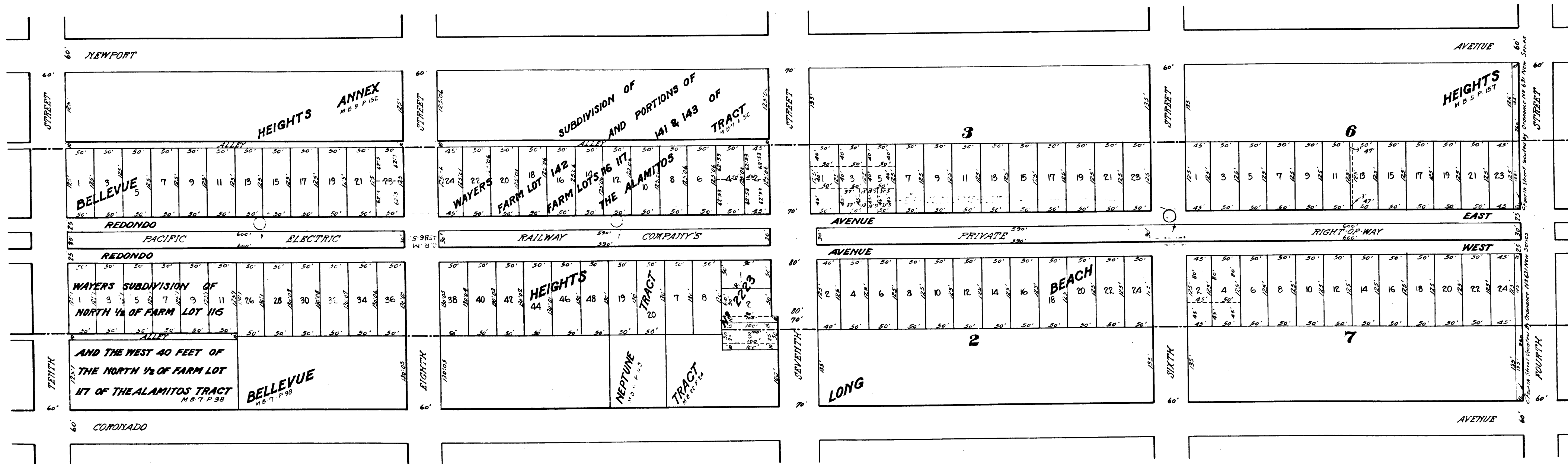


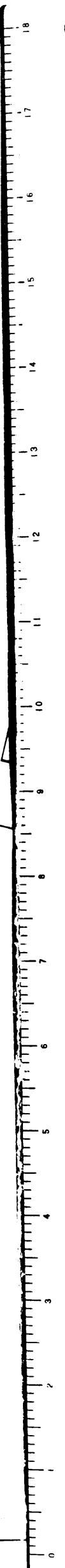
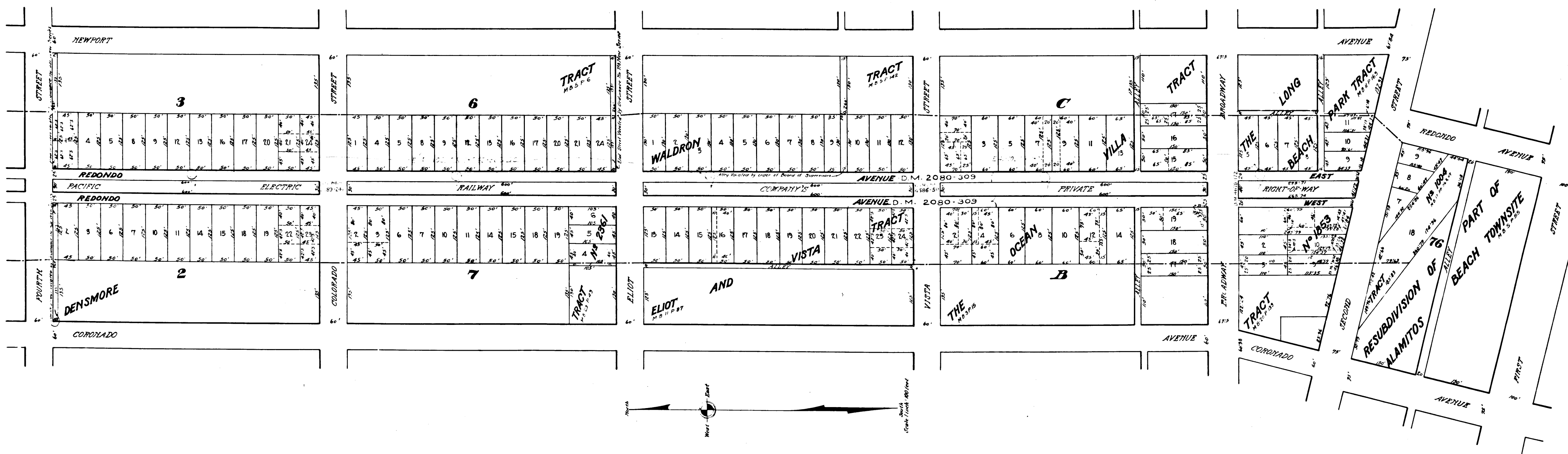
Superior Court Case No. 165443  
 Suit for Condemnation  
 Filed May 8 1923  
 City of Los Beach, Puff.  
 Vs.  
 Pacific Electric Railway Co. et al. Def.  
 Interlocutory decree rendered 3-20-23  
 Pending May 1st 1923  
 Judgment Book 203-287  
 Final judgment in favor of Plaintiff as per map.  
 Rendered Nov. 15, 1924.  
 DISE-159 C.R. 4710-284  
 Sit. # 30



C.F. 1251 1-3



C.F. 1251 2-3



C.F. 1251 3 - 3