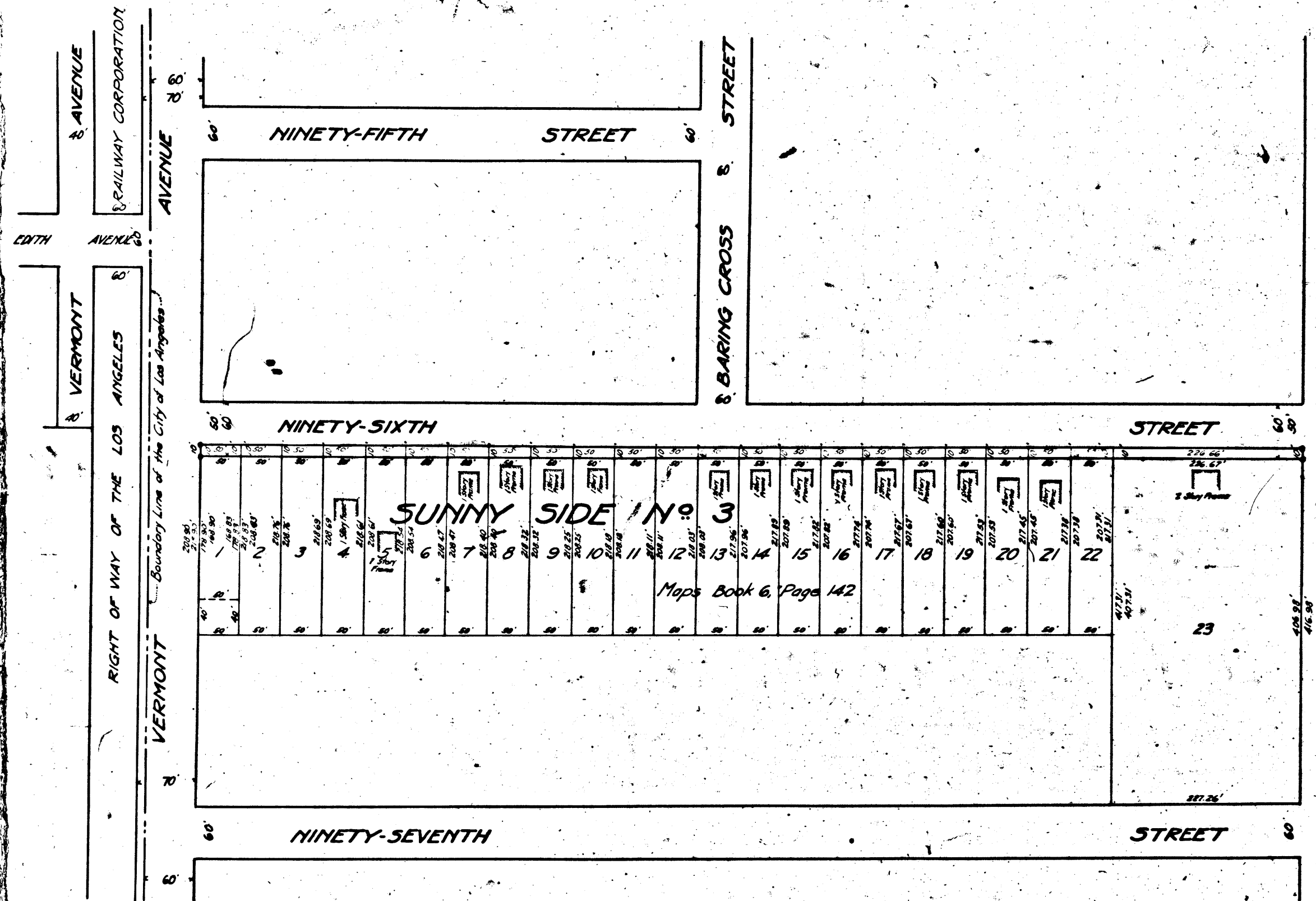


PROBELL & THE



Superior Court Case No. 17019A
 Suit for Condemnation
 Filed May 19, 1925
 City of Los Angeles, Pltff.
 Vs.
 Walter L. Hill et al. Def.
 Pending May 1, 1926
 Interlocutory judgment as per map, rendered Oct. 20th 1926 - Judg. Bk. 610-387
 Pending Apr. 8th 1927
 Final judgment in favor of Pltff. as per map, rendered May 3rd., 1928.
 D: 65-186, O.R. 7856-271.

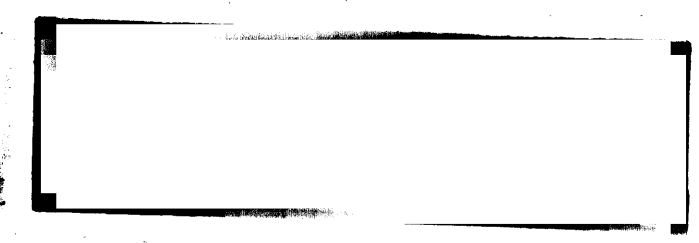
Sh 6

MAP

SHOWING THE LAND TO BE CONDEMNED
 FOR THE WIDENING OF
NINETY-SIXTH STREET
 ADJACENT TO THE SOUTHERLY LINE THEREOF
 BETWEEN
 HOOVER STREET AND VERMONT AVENUE
 IN THE
 CITY OF LOS ANGELES, CAL.

IN ACCORDANCE WITH ORDINANCES NOS. 50146 AND 51021 (NEW SERIES)
 H. A. VAN NORMAN, CITY ENGINEER MARCH 1925
 SCALE 1 INCH = 100 FEET

Note: Land to be condemned shown colored red
 Dotted lines and figures show where the
 holdings differ from the recorded subdivisions



A-5040