

Exhibit "D"

MAP No 592
SHOWING LAND TO BE CONDEMNED FOR THE
OPENING WIDENING AND LAYING OUT OF FIFTH STREET
FROM THE WESTERLY LINE OF GRANDVIEW
AVENUE TO THE EASTERLY LINE OF SONORA
AVENUE ALL WITHIN THE
CITY OF GLENDALE

Scale 1 in = 100 ft.

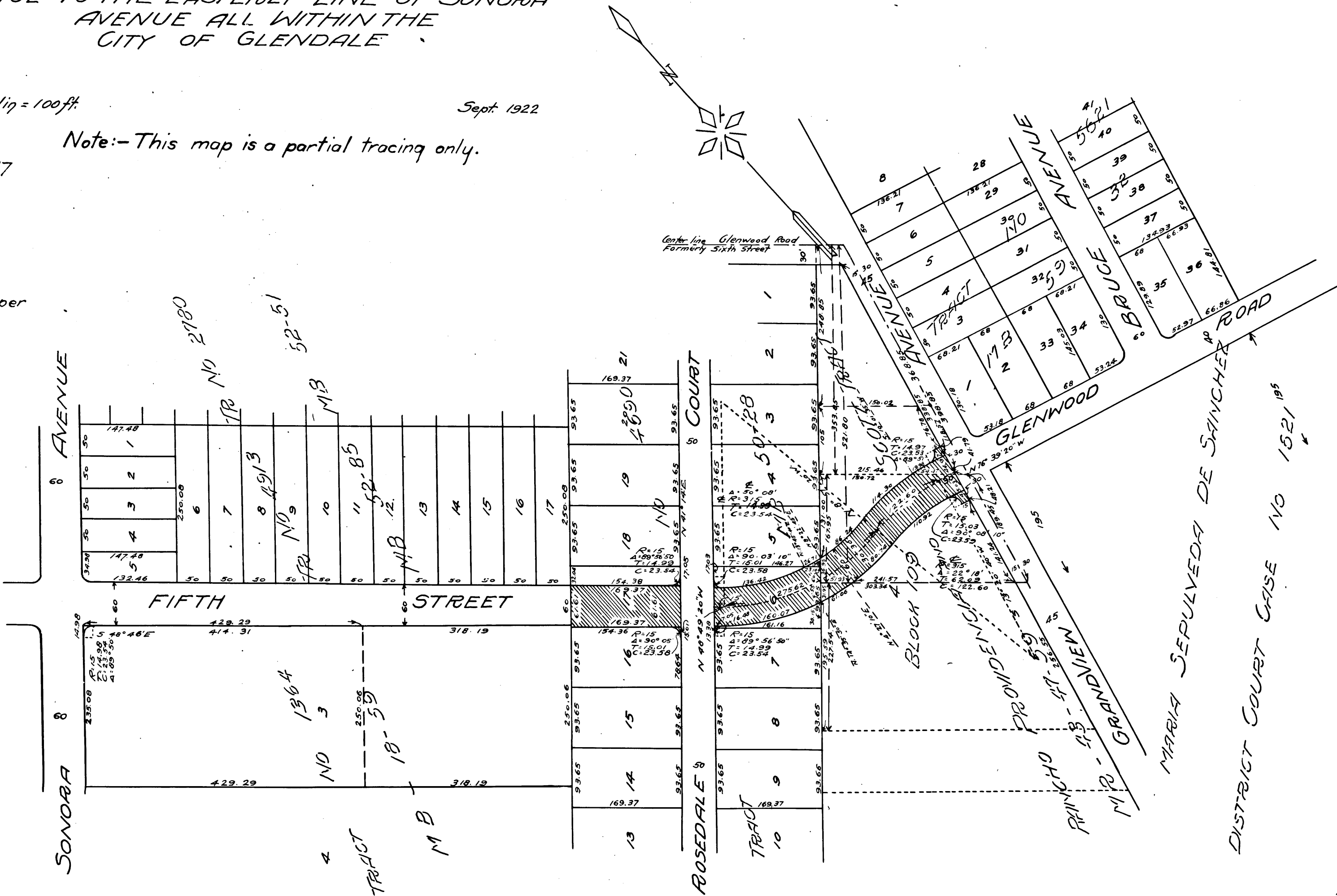
Sept. 1922

Note: - This map is a partial tracing only.

Superior Court Case No. 126747
Suit for Condemnation
Filed Aug. 4th 1923
City of Glendale, Plaintiff
Vs.
Mercer, et ux., et al. Def.

Final order in favor of Plaintiff as per
map, rendered April 29th 1925.

D: 44-155 O.R. 4409-46



C.F. 1254 -