

4-207

COUNTY
STREET OPENING DISTRICT NO 36
MAP OF
PROPOSED WIDENING
OF
LA BREA AVENUE
BETWEEN
FOUNTAIN AVE. & SANTA MONICA BLYD.

SHOWING
The exterior boundary of the District to be assessed therefor under
the provisions of the County Street Opening Act of 1923, Approved May 11, 1923
SCALE 1" = 100' FEBRUARY - 1925

Submitted, *Alfred Jones* Chief Deputy
Approved, *J.E. Rockhold* County Surveyor

Approved as to form
EDWARD T. BISHOP COUNTY COUNSEL
By *Everett W. Mattson* Chief Deputy

LEGEND
District Boundary Line - - - - -
Land sought to be condemned colored red

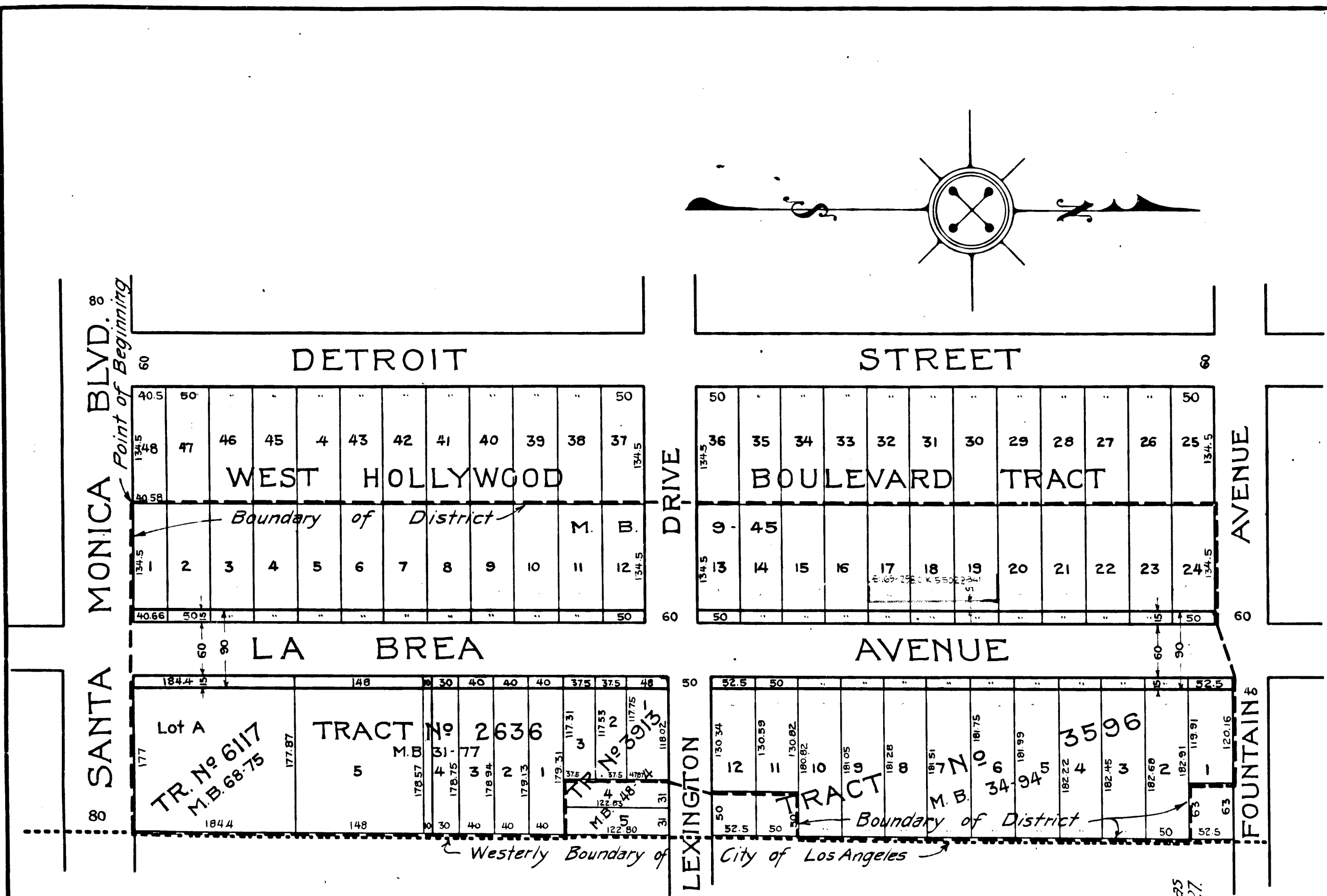
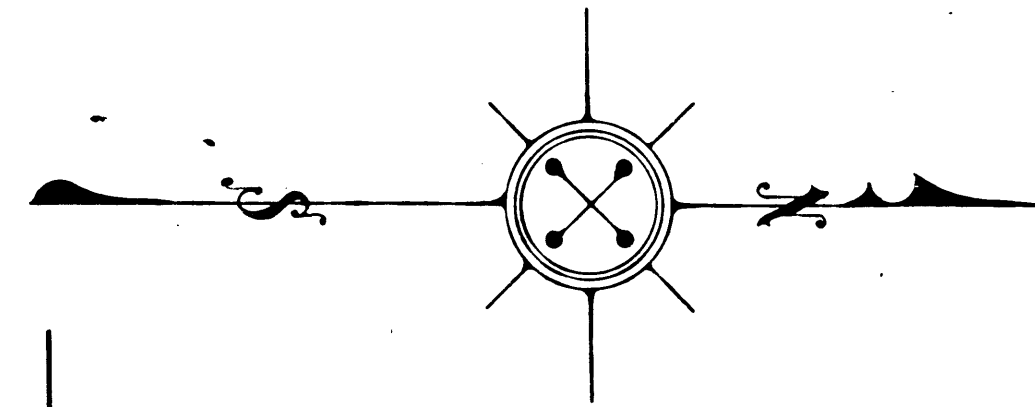
I hereby certify that the Board of Supervisors of Los Angeles County did on the 16th day of Feb. 1925 by resolution duly adopted, approve the accompanying map of the assessment district of County Street Opening District No 36 of the County of Los Angeles for the widening of La Brea Avenue.

Filed Feb. 16, 1925 in the
office of the County Surveyor
of Los Angeles County
J. E. ROCKHOLD - COUNTY SURVEYOR
By *J.F. Colb* Deputy

L. E. LAMPTON, County Clerk and
Ex-Officio Clerk of the Board of
Supervisors of said County of Los Angeles
by *Marie B. Beatty* Deputy

O. & W. No 36	
Drawn by E. Van Wert	Jan. 21
Traced by E. Van Wert	Feb. 21
Checked by Haskell	Feb. 25

C.F. 1255-



Superior Court Case No. 171317
 Suit for Condemnation
 Filed June 4, 1925
 County of Los Angeles, Plaintiff
 vs.
 Theodosia Albrich et al. Defendant
 Pending May 1, 1926.
 Interlocutory judgment as per
 map, rendered Oct. 15th 1926
 Judge, Blk. 627-386
 Reopened Apr. 8th 1927
 Final judgment in favor of Plaintiff as
 per map, rendered June 27th 1927.
 D-60-212, O.R. 6690-280

957
 101
 0 & W. No 36
 MEMO
 5014
 0 & W. No 36

18
 17
 16
 15
 14
 13
 12
 11
 10
 9
 8
 7
 6
 5
 4
 3
 2
 1
 0 & W. No 36