

COUNTY  
 STREET OPENING DISTRICT No 33  
 MAP OF  
**PROPOSED OPENING  
 EXTENDING AND WIDENING  
 OF SANTA MONICA BLVD.**  
 BETWEEN  
 DOHENY DR. AND WEST LINE TR. No 4912  
 SHOWING

THE EXTERIOR BOUNDARY OF THE DISTRICT TO BE ASSESSED THEREFOR UNDER  
 THE PROVISIONS OF THE COUNTY STREET OPENING ACT OF 1923, APPROVED MAY 11, 1923.

SCALE 1" = 100' JAN. 1925.  
 J.E. ROCKHOLD-COUNTY SURVEYOR

SUBMITTED: *Alfred James* CHIEF DEPUTY  
 APPROVED: *J.E. Rockhold* COUNTY SURVEYOR  
 APPROVED AS TO FORM  
 EDWARD T. BISHOP, COUNTY COUNSEL  
 BY *Wm. W. ...* CHIEF DEPUTY

- LEGEND -  
 DISTRICT BOUNDARY LINE -----  
 LAND SOUGHT TO BE CONDEMNED COLORED RED

I HEREBY CERTIFY THAT THE BOARD OF SUPERVISORS OF LOS ANGELES COUNTY  
 DID, ON THE 2<sup>nd</sup> DAY OF Feb. 1925, BY RESOLUTION DULY ADOPTED, APPROVE THE  
 ACCOMPANYING MAP OF THE ASSESSMENT DISTRICT OF COUNTY STREET OPENING  
 DISTRICT No 33 OF THE COUNTY OF LOS ANGELES FOR THE OPENING, EXTENDING AND  
 WIDENING OF SANTA MONICA BLVD.

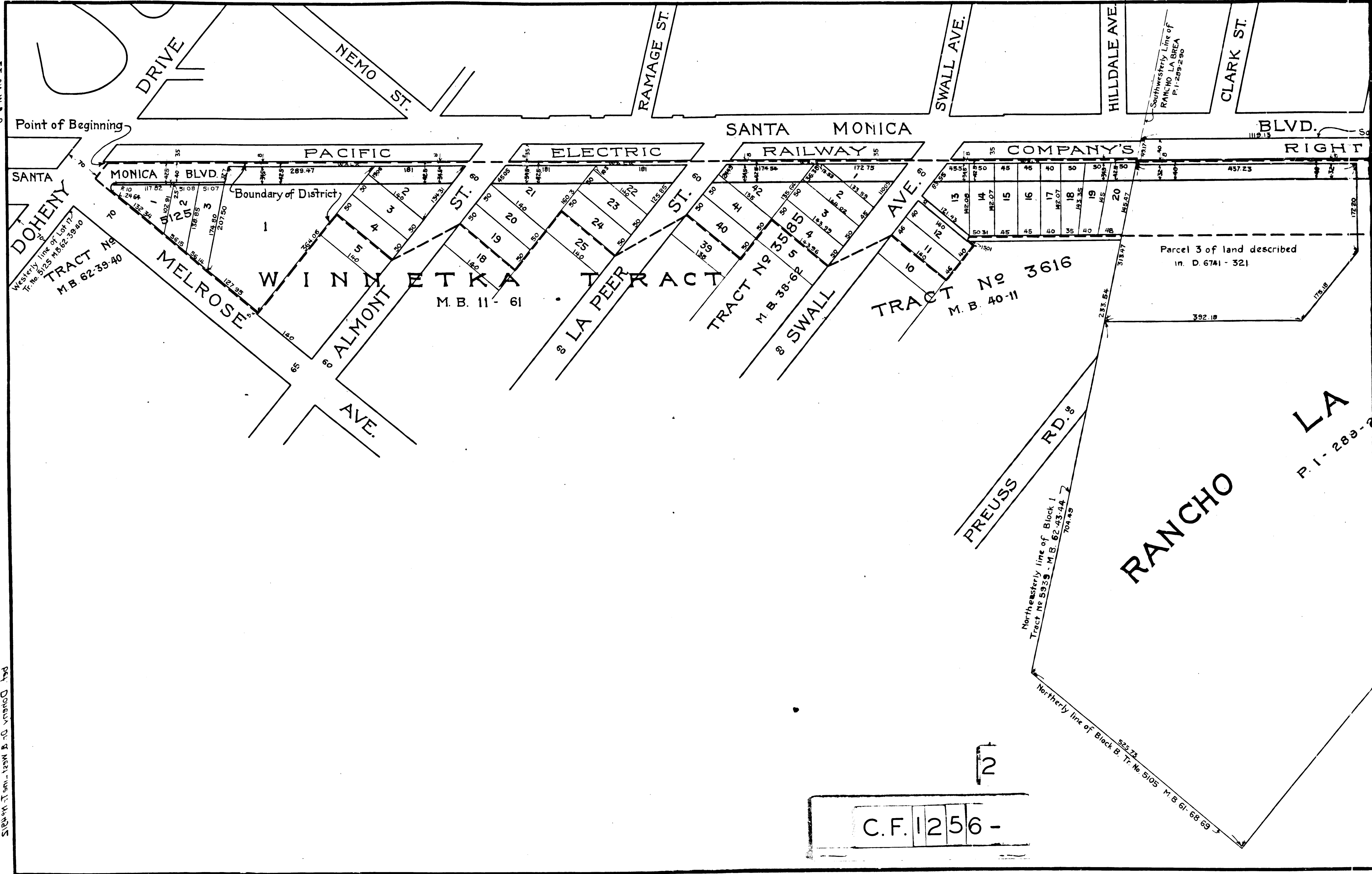
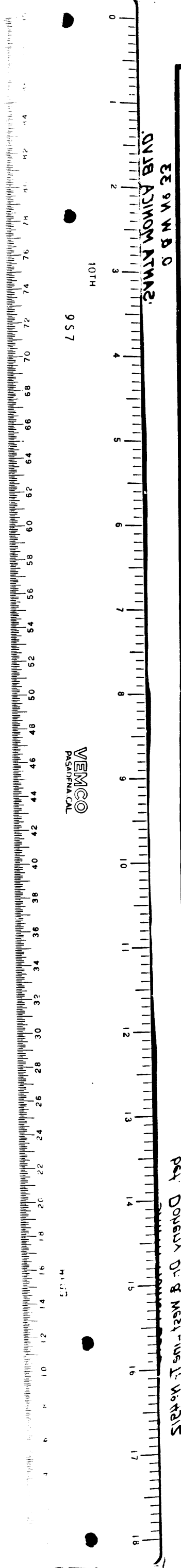
L. E. LAMPTON, COUNTY CLERK AND EX-OFFICIO  
 CLERK OF THE BOARD OF SUPERVISORS OF SAID  
 COUNTY OF LOS ANGELES  
 BY *Thorne R. Deatty* DEPUTY

FILED FEB. 7, 1925 IN THE  
 OFFICE OF THE COUNTY SURVEYOR  
 OF LOS ANGELES COUNTY  
 J.E. ROCKHOLD COUNTY SURVEYOR  
 BY *J.E. Rockhold* DEPUTY

*Alfred James vs. ...*  
*Filed ...*  
*County of Los Angeles, ...*  
*vs.*  
*... et al.*  
*Pending May 1, 1925.*  
*Interlocutory judgment as per min.*  
*rendered Jan. 31st 1927*  
*July 24, 1935-65*  
*Dismissed by order of court Jan 5 1973*  
*Judge Ex 644-310*

C.F. 1256 -

O. & W. No 33	
Drawn by R.F. Flickwir	Jan '25
Traced by E. Van Wert	Jan '25
Checked by R.B. Heuer	Jan. 25



C.F. 1256 -

2

RANCHO LA P.I. - 289-7

Southwesterly Line of RANCHO LA BREA P. 1-289-290

Northerly line of Block 1 Tract No 5938 - M.B. 62-43-44 7 704.89

Northerly line of Block B. Tr. No 5105 M.B. 61-68-69 552.74

Parcel 3 of land described in D. 6741 - 321

Point of Beginning

Boundary of District