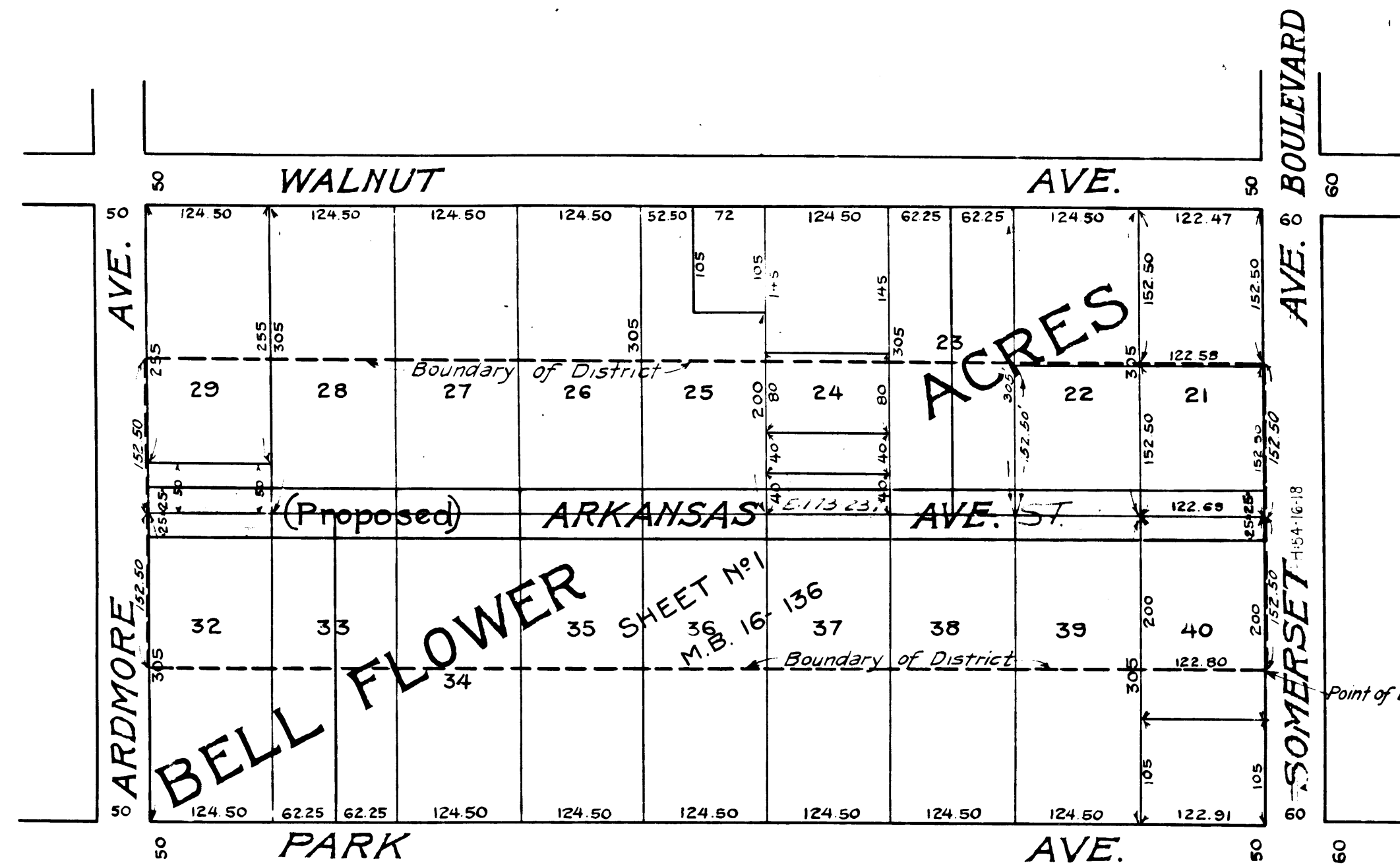


COUNTY  
STREET OPENING DISTRICT NO 32  
MAP OF  
PROPOSED OPENING  
OF ARKANSAS AVENUE  
BETWEEN  
ARDMORE AVE. & SOMERSET AVE.



SHOWING:  
The exterior boundary of the District to be assessed therefor under  
the provisions of the County Street Opening Act of 1923, Approved May 11, 1923  
SCALE 1" = 100' DECEMBER 1924  
J.E. ROCKHOLD - COUNTY SURVEYOR  
Submitted, *Alfred Jones* Chief Deputy Approved, *J.E. Rockhold* County Surveyor

Approved as to form  
Edward T. Bishop - County Counsel  
by *Edward T. Bishop* Chief Deputy

LEGEND:  
District Boundary Line - - - - -  
Land sought to be condemned colored red

I hereby certify that the Board of Supervisors of Los Angeles County did, on the 19th day of January 1925, by resolution, duly adopted, approve the accompanying map of the assessment district of County Street Opening District No. 32 of the County of Los Angeles for the opening of Arkansas Avenue.

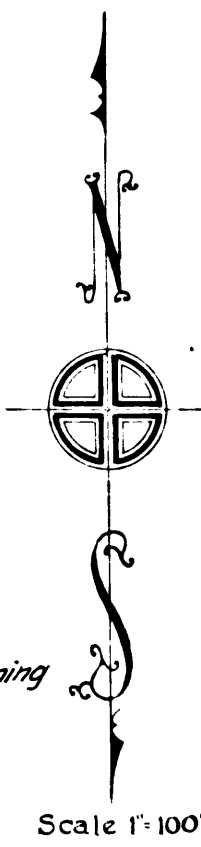
Filed Jan. 19, 1925 in the  
office of the County Surveyor  
of Los Angeles County  
J.E. ROCKHOLD - COUNTY SURVEYOR  
by *M.F. Call* Deputy

L.E. LAMPTON, County Clerk & Ex-Officio Clerk  
OF THE BOARD OF SUPERVISORS OF  
SAID COUNTY OF LOS ANGELES  
by *Memo Beatty* Deputy  
Sht. #33

Superior Court Case No. 171099  
Suit for Condemnation  
Filed June 2, 1925  
County of Los Angeles, Pltff.  
Vs.  
*Eliza W. Bruner, et al* Def.  
Interlocutory decree rendered 3-29-26  
Pending May 1st 1926  
Judgment Book 603-294  
Final judgment in favor of Plaintiff as  
per map, rendered Nov 5th 1926  
Judg. Bk. 630-173

C.F. 1257 -

O & W. N° 32	
Drawn by <i>E. Van Wert</i>	Dec. 24
Traced by <i>E. Van Wert</i>	Dec. 24
Checked by <i>N.F.C. 66</i>	Dec. 24



MEMCO  
PACIFIC

957