

MAP
 SHOWING LAND TO BE CONDEMNED
 FOR THE
 WIDENING
 OF
 GREENWOOD STREET
 BETWEEN
 WHITTER BOULEVARD AND WASHINGTON BOULEVARD
 IN THE
 CITY OF MONTEBELLO

In accordance with Ordinance No 110
 E.F. Godes, City Engineer
 March, 1925

Scale: 1" = 50'

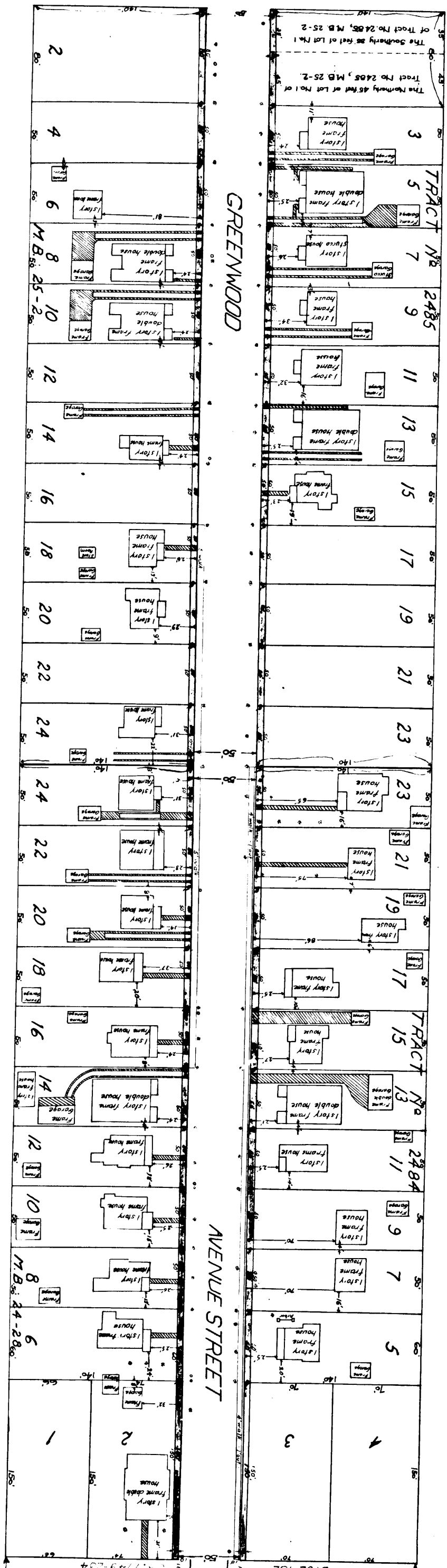
Note: Land to be condemned shown colored Red.

Symbols:
 Cement work \blacksquare Fire hydrants \square
 Trees \circ Poles \bullet
 Ornamental Lights \square

Superior Court Case No 17190
 Suit for Condemnation
 Filed June 15, 1925
 City of Montebello, Pitts.
 vs
 Eimer E. Gardner, et al. Def.

Final Judgment in favor of Plaintiff
 per map rendered in December 15, 1927
 D-62-132
 S-3749-234

WHITTER BOULEVARD
 Recording No. 1925
 Final Judgment in favor of Plaintiff
 per map rendered in December 15, 1927
 D-62-132
 S-3749-234



C.F. 1261 -