

Superior Court Case No. 177317
 Suit for Condemnation
 Filed Aug. 2, 1925
 County of Los Angeles, Plff.
 August 15, et al. Def.
 Pending Mar. 1, 1926.

Interlocutory judgment in per
 map, rendered Sept. 19, 1925
 Pending App. 8-11-25
 Final judgment in favor of Plffs per
 map rendered January 27, 1926
 86-77, SR 7781-158

COUNTY
 STREET OPENING DISTRICT NO. 38
 MAP OF
 PROPOSED WIDENING
 OF
COMPTON AVENUE
 BETWEEN
 CENTER OF SEC. 28 T.2S. R.13 W. & SHORB AVE.

SHOWING
 The exterior boundary of the District to be assessed therefor under
 the provisions of the County Street Opening Act of 1923 Approved May 11, 1923
 SCALE 1"=100' MARCH 1925

Submitted, *Alfred J. Over* Chief Deputy
 Approved, *J. E. Rockhold* County Surveyor
 J. E. ROCKHOLD - COUNTY SURVEYOR

Approved as to form
 EDWARD T. BISHOP COUNTY COUNSEL
 By, *Edward T. Bishop* Chief Deputy

INDEX 7

LEGEND
 District Boundary Line - - - - -
 Land sought to be condemned colored red

I hereby certify that the Board of Supervisors of
 Los Angeles County did on the 22 day of Dec. 1925 by resolution
 duly adopted, approve the accompanying map of the assessment
 district of County Street Opening District No. 38 of the County
 of Los Angeles for the widening of Compton Avenue.

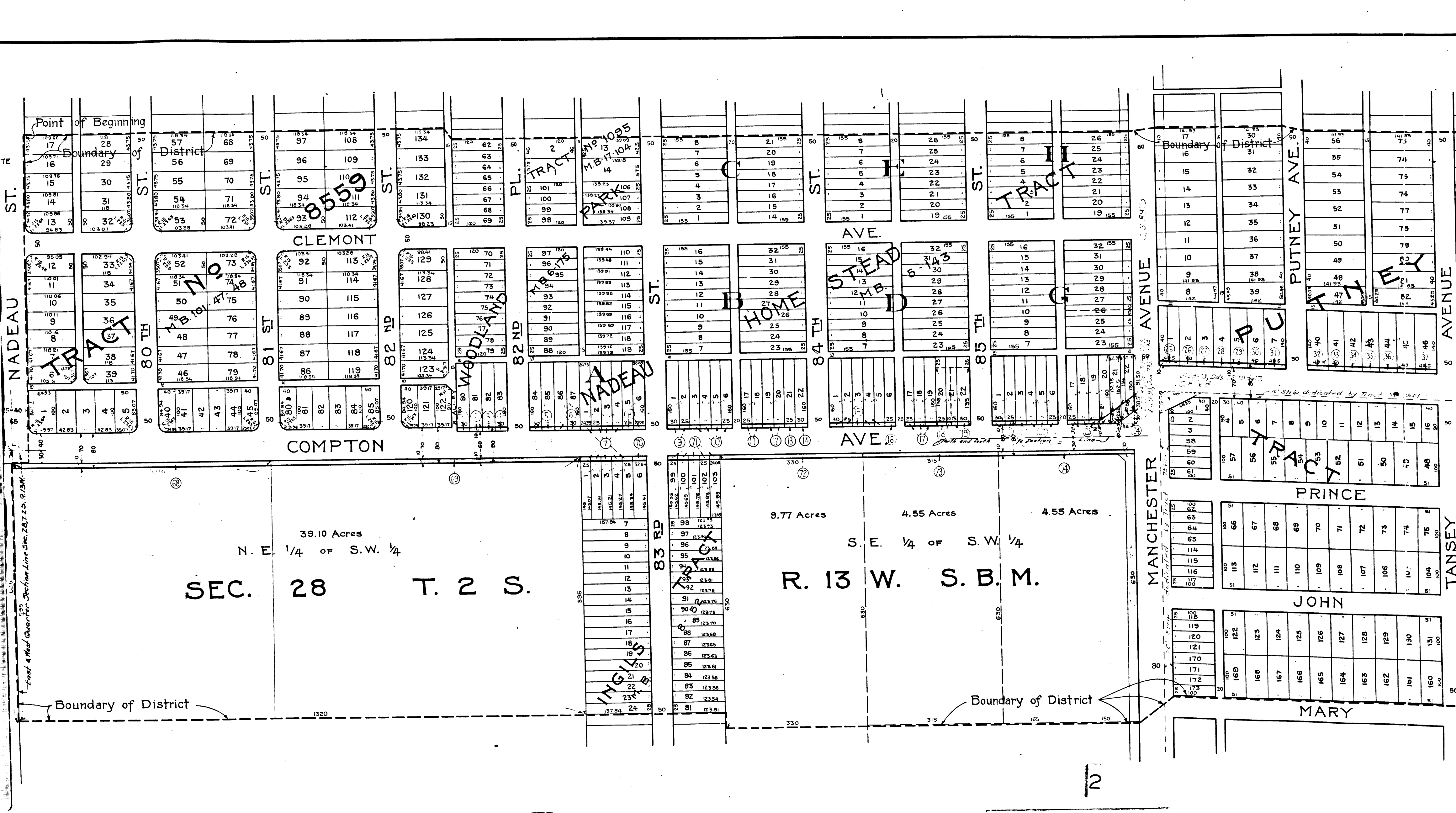
Filed Mar. 30, 1925 in the
 office of the County Surveyor
 of Los Angeles County
 J. E. ROCKHOLD - COUNTY SURVEYOR

L. E. LAMPTON, County Clerk and
 Ex-Officio Clerk of the Board of
 Supervisors of said County of Los Angeles
 by, *L. E. Lampton* Deputy

C.F. 1267-

O. & W. No. 38
 Drawn by E. Van Wert
 Traced by E. Van Wert
 Checked by Haskell

957



C.F. 1267-

12