

A-58
4-144

C.F. 1269 -

Sh. 42

Index #8

Superior Court Case No. 173746
 Suit for Condemnation
 Filed July 8, 1925
 City of Pasadena, Plff.
 Vs.
 Will S. Laurie, et al. Def.
 Pending May 1, 1926.
 Interlocutory judgment as per map,
 rendered June 2nd 1926
 Judg. Bk. 602-384
 Pending Apr. 8th 1927
 Final judgment in favor of Plff. as per
 map, rendered June 24, 1926.
 D:59-272 O.R. 7015 - 244.

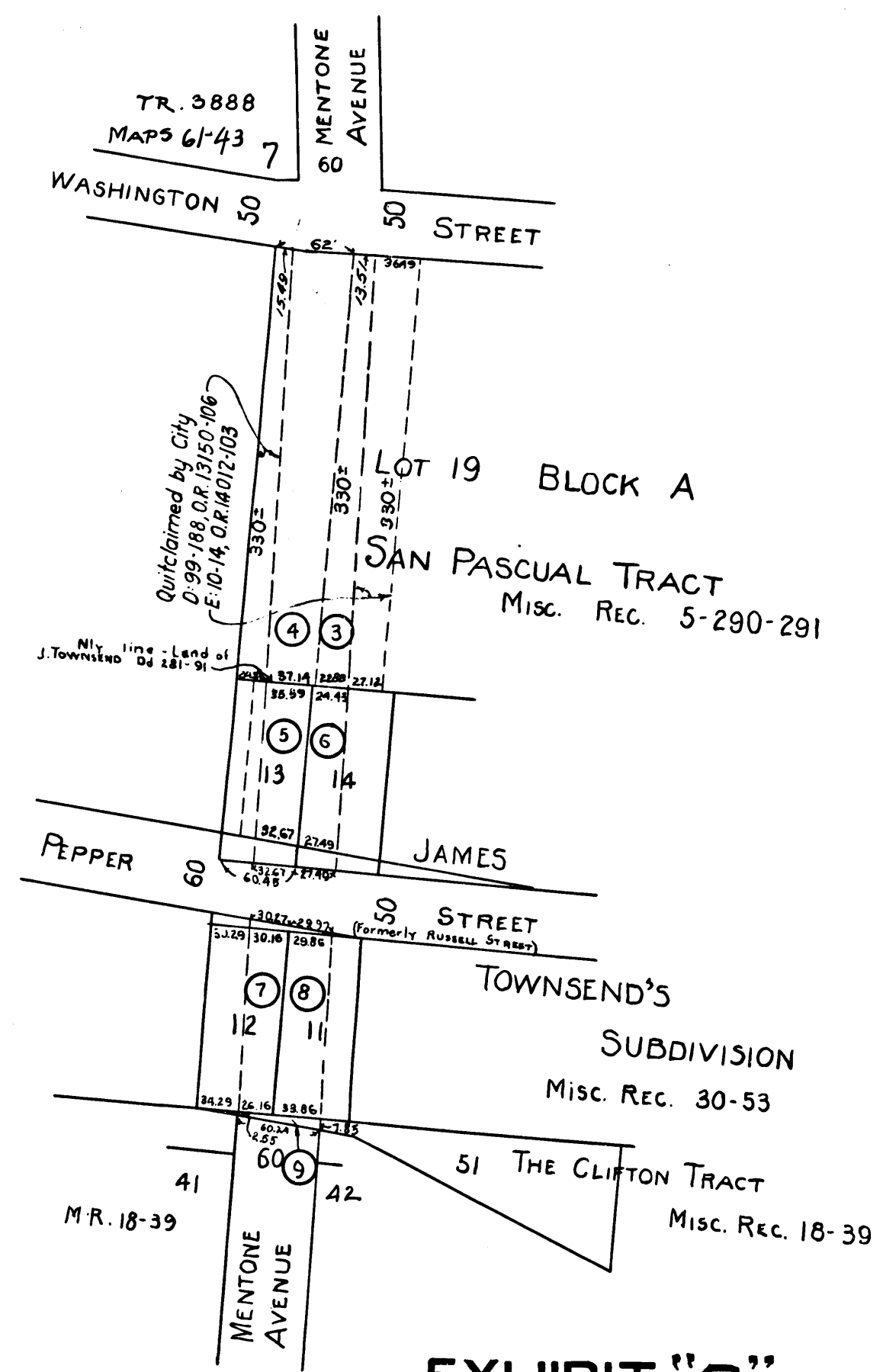
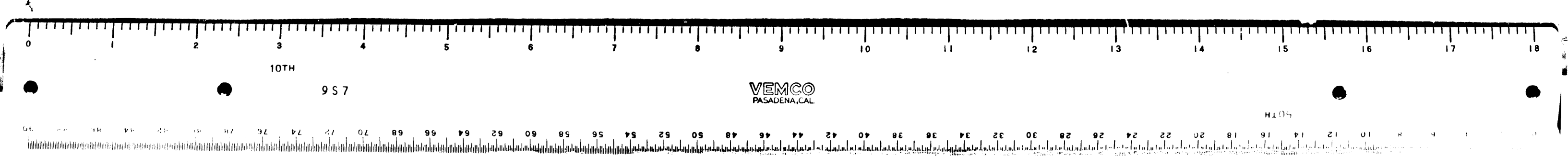
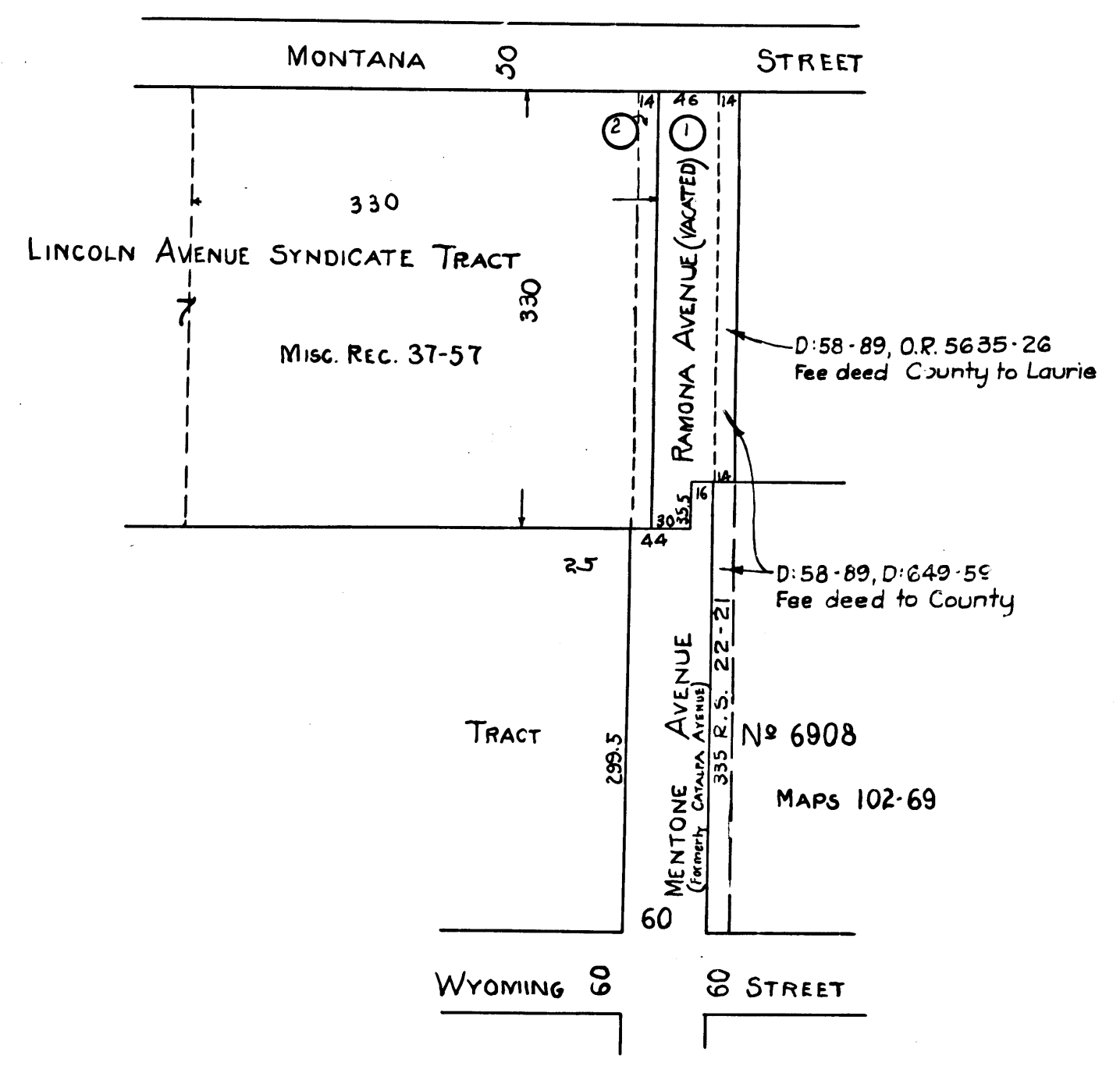


EXHIBIT "C"

NOTE: SHADED PORTIONS SHOW LAND TO BE CONDEMNED

DRAWN BY: C. M. S. CHECKED BY: U. E. MURPHY FIELD BOOKS APPROVED: W. C. GARDNER CITY ENGINEER & SUPERINTENDENT OF STREETS	CITY OF PASADENA OFFICE OF CITY ENGINEER & SUPERINTENDENT OF STREETS OPENING AND EXTENDING OF MENTONE AVENUE WASHINGTON STREET SLY TO MENTONE AVE. MONTANA STREET SLY TO MENTONE AVENUE	JUNE 1925 1" = 100' DRAWING NUMBER G-402
---	--	--

Index #8



A-194