

COUNTY  
STREET OPENING DISTRICT No 17  
MAP OF  
PROPOSED OPENING, WIDENING, & EXTENDING  
OF  
**PINE AVENUE**

BETWEEN  
BELL AVE. & THE NORTHERLY LINE OF TRACT No 3509  
AND THE  
PROPOSED WIDENING  
OF  
**WALSH DRIVE**

BETWEEN  
THE WESTERLY LINE OF PROPOSED PINE AVE.  
AND FLORA AVENUE  
AND THE  
PROPOSED OPENING  
OF

**BELLWOOD AVENUE**  
BETWEEN  
WALSH DRIVE & FLORENCE AVE.

SHOWING,  
The exterior boundary of the District to be assessed therefor  
under the provisions of the County Street Opening Act of 1923, Approved May 11, 1923

SCALE 1" = 100'  
Submitted,

*Alfred Jones*  
Chief Deputy

Approved, *J. E. Rockhold*  
County Surveyor

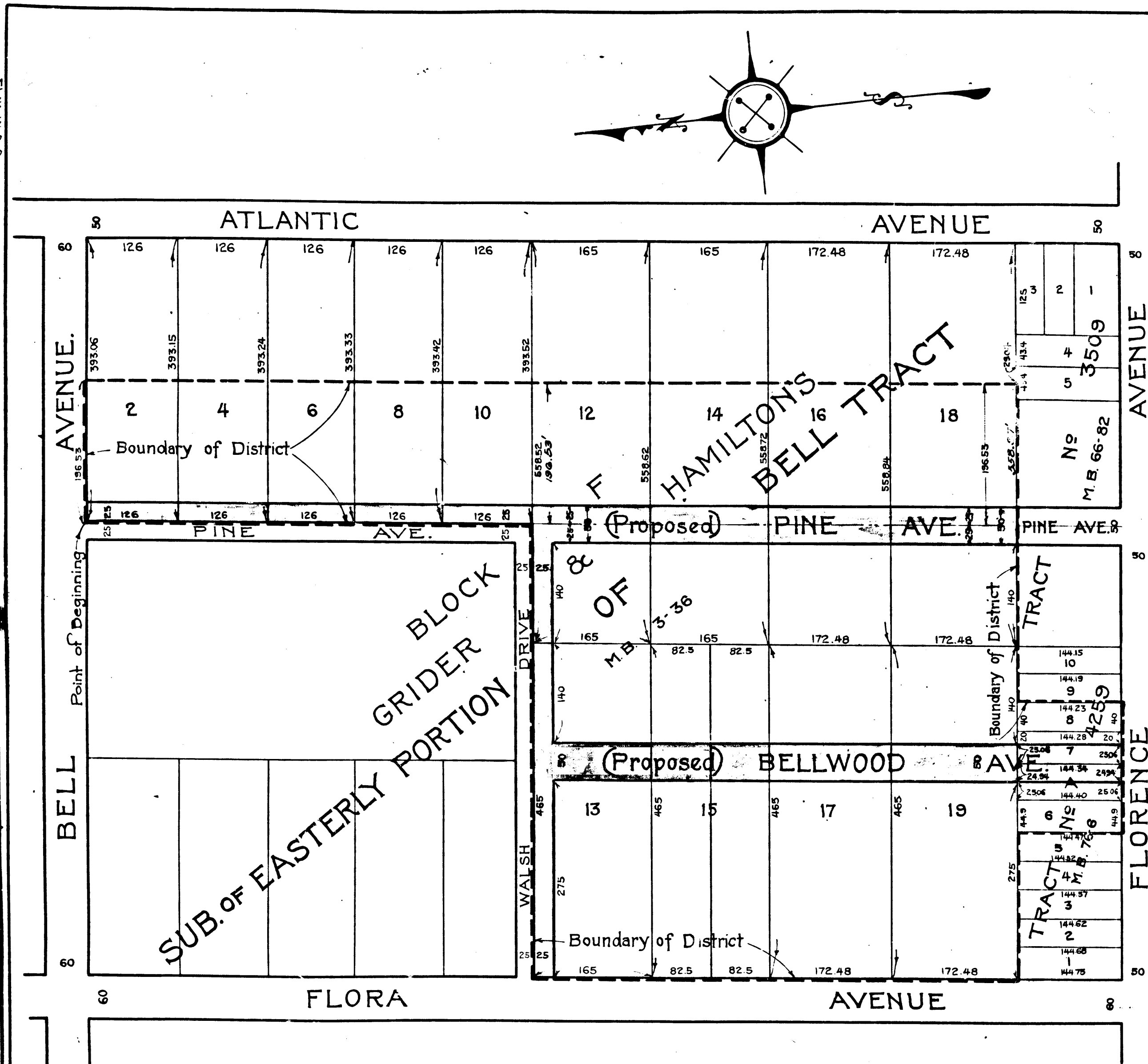
Approved as to form  
EDWARD T. BISHOP, COUNTY COUNSEL  
By, *Samuel Armstrong*  
Chief Deputy

LEGEND  
District Boundary Line — — — —  
Land sought to be condemned colored red

I hereby certify that the Board of Supervisors of Los Angeles County did on the 16th day of March 1925  
by resolution duly adopted, approve the accompanying map of the assessment district of County Street  
Opening District No 17 of the County of Los Angeles for the opening, widening, and extending of Pine Avenue,  
the widening of Walsh Drive, and the opening of Bellwood Avenue.

Filed March 16, 1925 in the office of  
County Surveyor of Los Angeles County  
J. E. ROCKHOLD, COUNTY SURVEYOR  
By, *M. F. Cobb*  
Deputy

L. E. Lampton, County Clerk and Ex-Officio Clerk of the  
Board of Supervisors of said County of Los Angeles.  
By, *Mame B. Beatty*  
Deputy



*Superior Court Case No. 174005  
Suit for Condemnation  
Filed July 13, 1925  
County of Los Angeles, Pltffs.  
vs.  
Theodore W. Anderson et al. Def.  
Pending May 1, 1926  
Case dismissed Nov. 8th 1926*

O. & W. No 17	
Drawn by E. Van Wert	F. 6. 25
Traced by E. Van Wert	F. 6. 25
Checked by Hastell	Feb. 25

C.F. 1270-