

COUNTY  
STREET OPENING DISTRICT NO 41  
MAP OF

PROPOSED OPENING  
OF  
**ACACIA AVENUE**

BETWEEN  
CLOGSTON AVENUE & HOWARD AVENUE

SHOWING  
The exterior boundary of the District to be assessed therefor under  
the provisions of the County Street Opening Act of 1923, Approved May 11, 1923

SCALE 1" = 100'

Submitted,

*Alfred Jones*  
Chief Deputy

J. E. ROCKHOLD COUNTY SURVEYOR

Approved

*J. E. Rockhold*  
County Surveyor

Approved as to form  
EDWARD T. BISHOP COUNTY COUNSEL

By *Edward T. Bishop*  
Chief Deputy

LEGEND

District Boundary Line  
Land sought to be condemned colored red

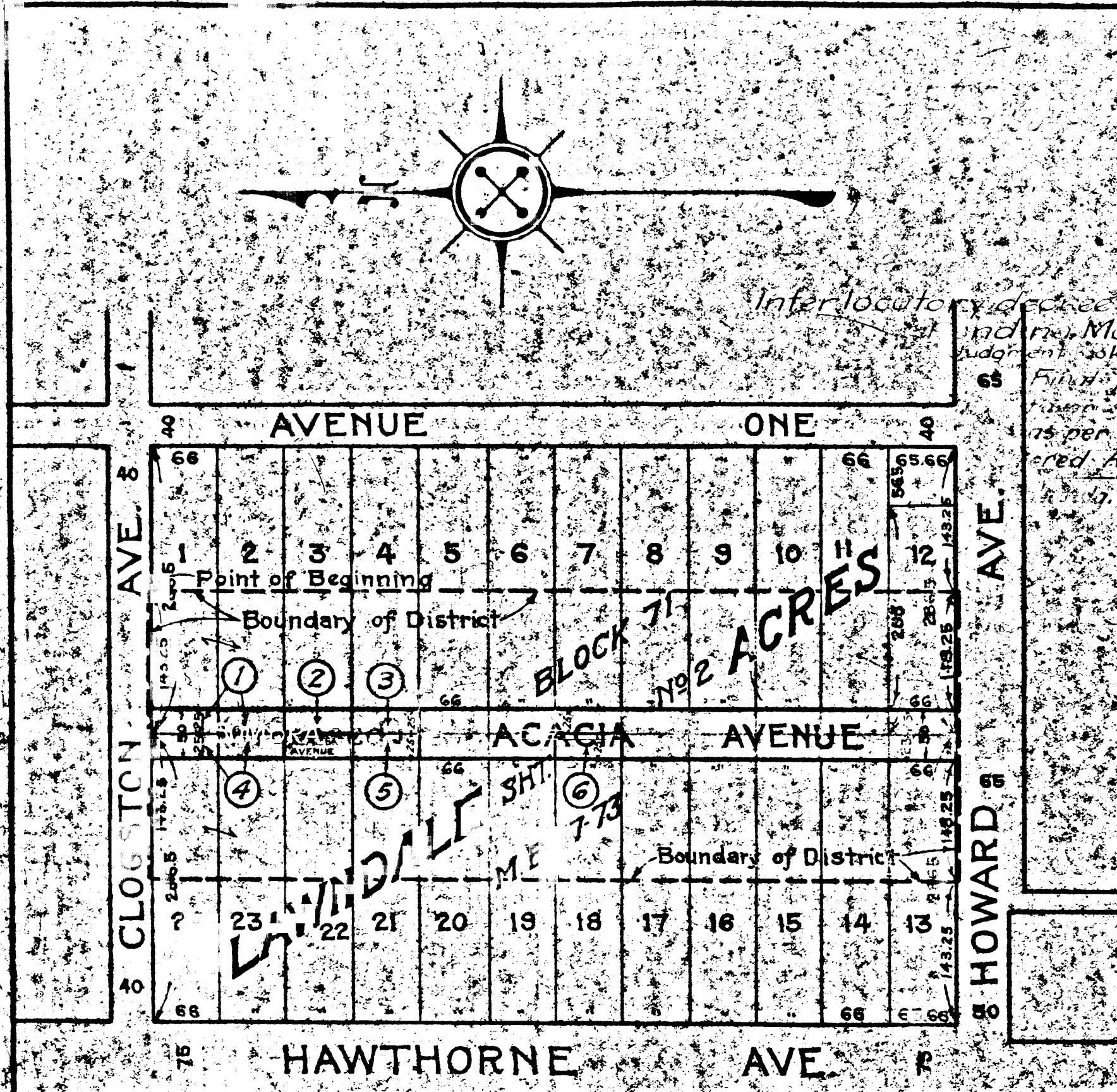
I hereby certify that the Board of Supervisors of  
Los Angeles County did on the 6<sup>th</sup> day of 1925, in solution  
duly adopted approve the accompanying map of the assessment  
district of County Street Opening District No 41 of the County  
of Los Angeles for the opening of Acacia Avenue

Filed A. C. 1925 in the  
office of the County Surveyor  
of Los Angeles County  
J. E. ROCKHOLD COUNTY SURVEYOR

*A. E. Cobb*  
Deputy

L. E. LAMPTON County Clerk and  
Ex Officio Clerk of the Board of  
Supervisors of said County of Los Angeles

by *M. B. Beatty*  
Deputy



**EXHIBIT "A"**

Numbers in circles indicate parcels sought  
to be condemned.  
The parcels are described in Paragraph  
VII of the complaint.  
Portion colored red shows location, gen-  
eral route and termini of Public Road  
to be condemned.

S. O. D. No 41
by <i>E. Van Wert</i>
by <i>E. Van Wert</i>
by <i>H. H. H. H.</i>