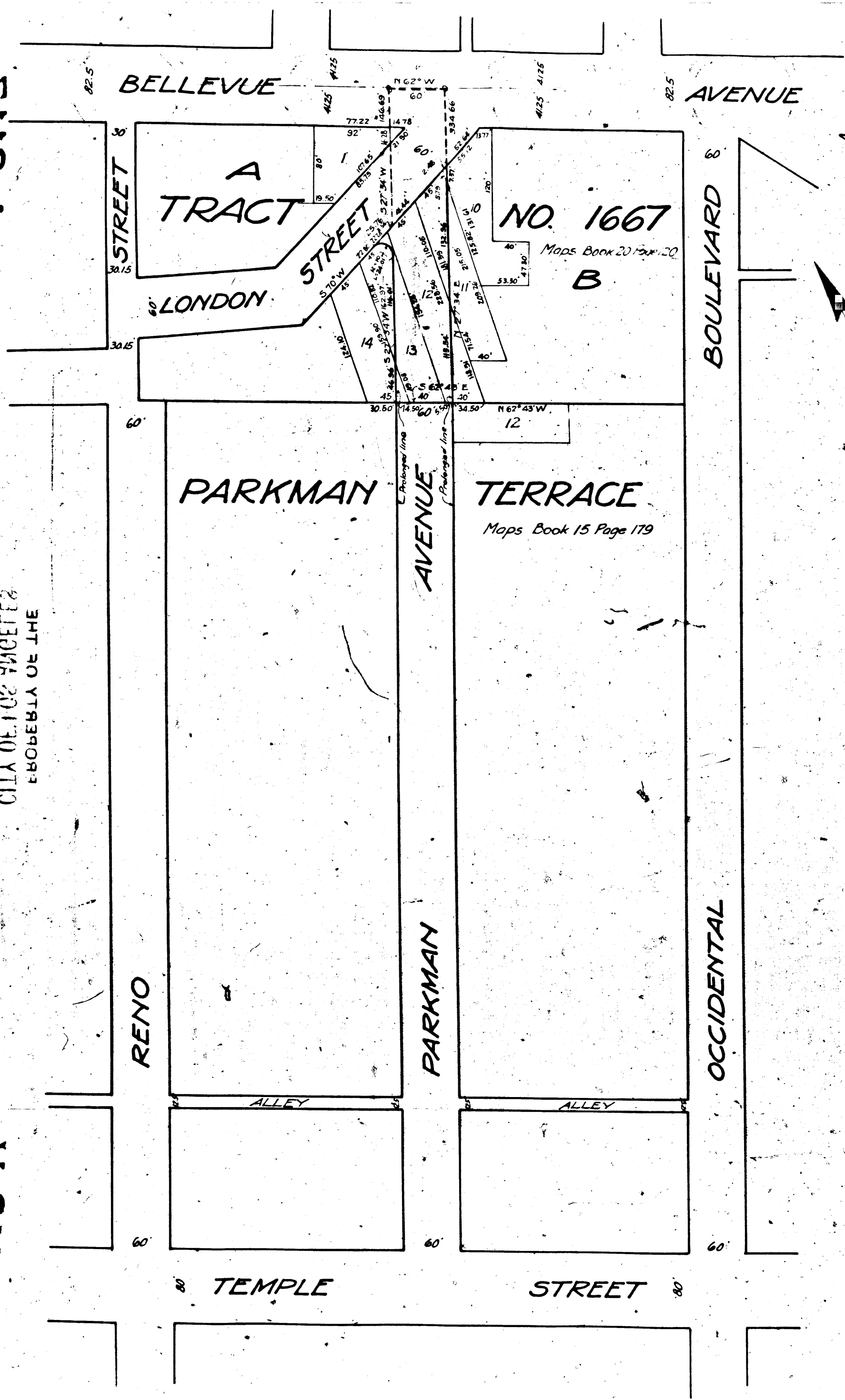


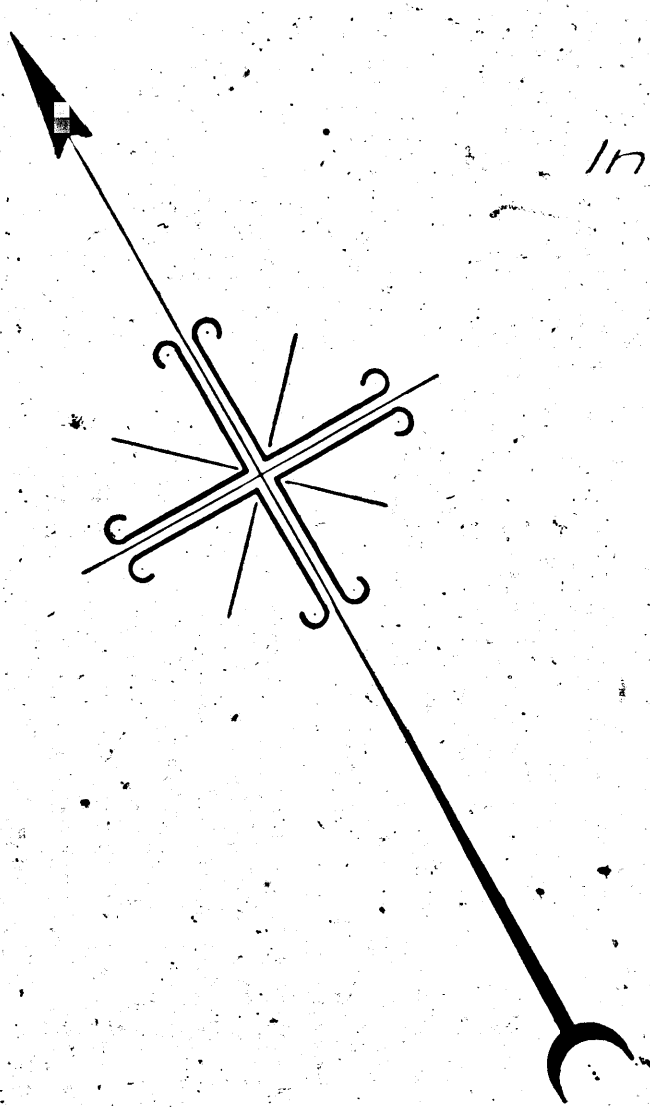
V-311-A

V-311-A

PROPERTY OF THE CITY OF LOS ANGELES



Superior Court Case No. 12,000  
 Suit for Condemnation  
 Filed July 8, 1925  
 City of Los Angeles, Plff.  
 vs.  
 M. De Gaudio, et al. Defs.  
 Pending July 22, 1925  
 Interlocutory decree rendered 1-4-26  
 Pending May 1st 1926  
 Judgment Book 600-245  
 Final judgment in favor of Plff.  
 as per map, rendered Aug. 30th 1926  
 Judg. Bk. 610-277



**MAP**  
 SHOWING THE LAND TO BE CONDEMNED  
 FOR THE OPENING AND EXTENDING OF  
**PARKMAN AVENUE**  
 BETWEEN  
**BELLEVUE AVENUE**  
 AND  
**TEMPLE STREET**  
 IN THE  
**CITY OF LOS ANGELES, CAL.**

IN ACCORDANCE WITH ORDINANCES NOS. 51022 AND 51957 (NEW SERIES)  
 H.A. VAN NORMAN CITY ENGINEER APRIL 1925  
 SCALE 1 INCH = 100 FEET

Note: Land to be condemned shown colored red.

V-311-A

V-311-A