

COUNTY
STREET OPENING DISTRICT No 42
MAP OF
PROPOSED OPENING & EXTENDING
OF
ROSEWOOD AVENUE

BETWEEN
PALM STREET & PINE STREET

SHOWING -
The exterior boundary of the District to be assessed therefor under
the provisions of the County Street Opening Act of 1923, Approved May 11, 1923
SCALE 1"=100' MARCH, 1925

Submitted, J.E. ROCKHOLD - COUNTY SURVEYOR

Alfred Jones
Chief Deputy

J.E. Rockhold
County Surveyor

Approved as to form
EDWARD T. BISHOP COUNTY COUNSEL
By, *Edward T. Bishop*
Chief Deputy

LEGEND
District Boundary Line - - - - -
Land sought to be condemned colored red

I hereby certify that the Board of Supervisors of
Los Angeles County did on the 6 day of April 1925 by resolution
duly adopted approve the accompanying map of the assessment
district of County Street Opening District No 42 of the County
of Los Angeles for the opening & extending of Rosewood Ave.

Filed Apr. 6, 1925 in the
office of the County Surveyor
of Los Angeles County
J.E. ROCKHOLD - COUNTY SURVEYOR

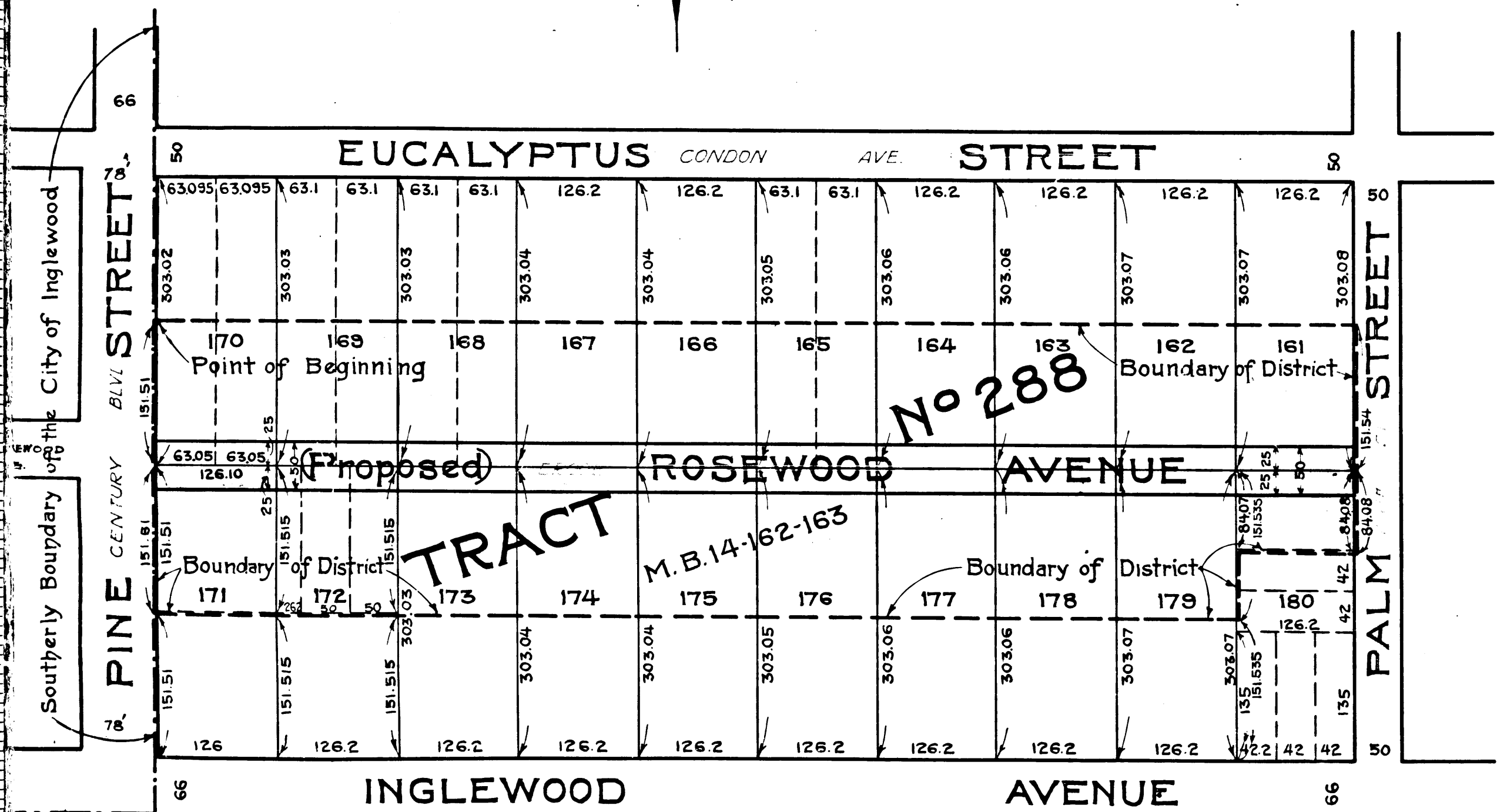
M.F. Selph
Deputy

L.E. LAMPTON, County Clerk and
Ex Officio Clerk of the Board of
Supervisors of said County of Los Angeles
by, *Mamie B. Beatty*
Deputy.

*Superior Court Case No. 1747
Suit for Damages
County of Los Angeles
Pending May 1, 1926
Final judgement in favor of Plff as per
map, rendered February 25th 1927
D. 58-257 D.P. 6685-116*

C.F. 1275-

S.O.D. No
Drawn by E. Van We
Traced by E. Van We
Checked by *Mamie B. Beatty*



10TH 9 5 7

10TH 9 5 7

MEMPHIS

MEMPHIS