

COUNTY
STREET OPENING DISTRICT NO 40
MAP OF
PROPOSED OPENING
OF
OREGON STREET

BETWEEN
THE MIDWAY & CENTER STREET

SHOWING

The exterior boundary of the District to be assessed therefor under
the provisions of the County Street Opening Act of 1923, Approved May 11, 1923

SCALE 1"=100'

MARCH, 1925

J.E. ROCKHOLD - COUNTY SURVEYOR

Submitted,

Approved

Alfred Jones
Chief Deputy

J.E. Rockhold
County Surveyor

Approved as to form
EDWARD T. BISHOP COUNTY COUNSEL

By, *Edward T. Bishop*
Chief Deputy

LEGEND

District Boundary Line - - - - -
Land sought to be condemned colored red

I hereby certify that the Board of Supervisors of
Los Angeles County did on the 13 day of April, 1925 by resolution
duly adopted approve the accompanying map of the assessment
district of County Street Opening District No 40 of the County
of Los Angeles for the opening of Oregon Street

Filed April 13, 1925 in the
office of the County Surveyor
of Los Angeles County
J.E. ROCKHOLD - COUNTY SURVEYOR

N.F. Colb
Deputy

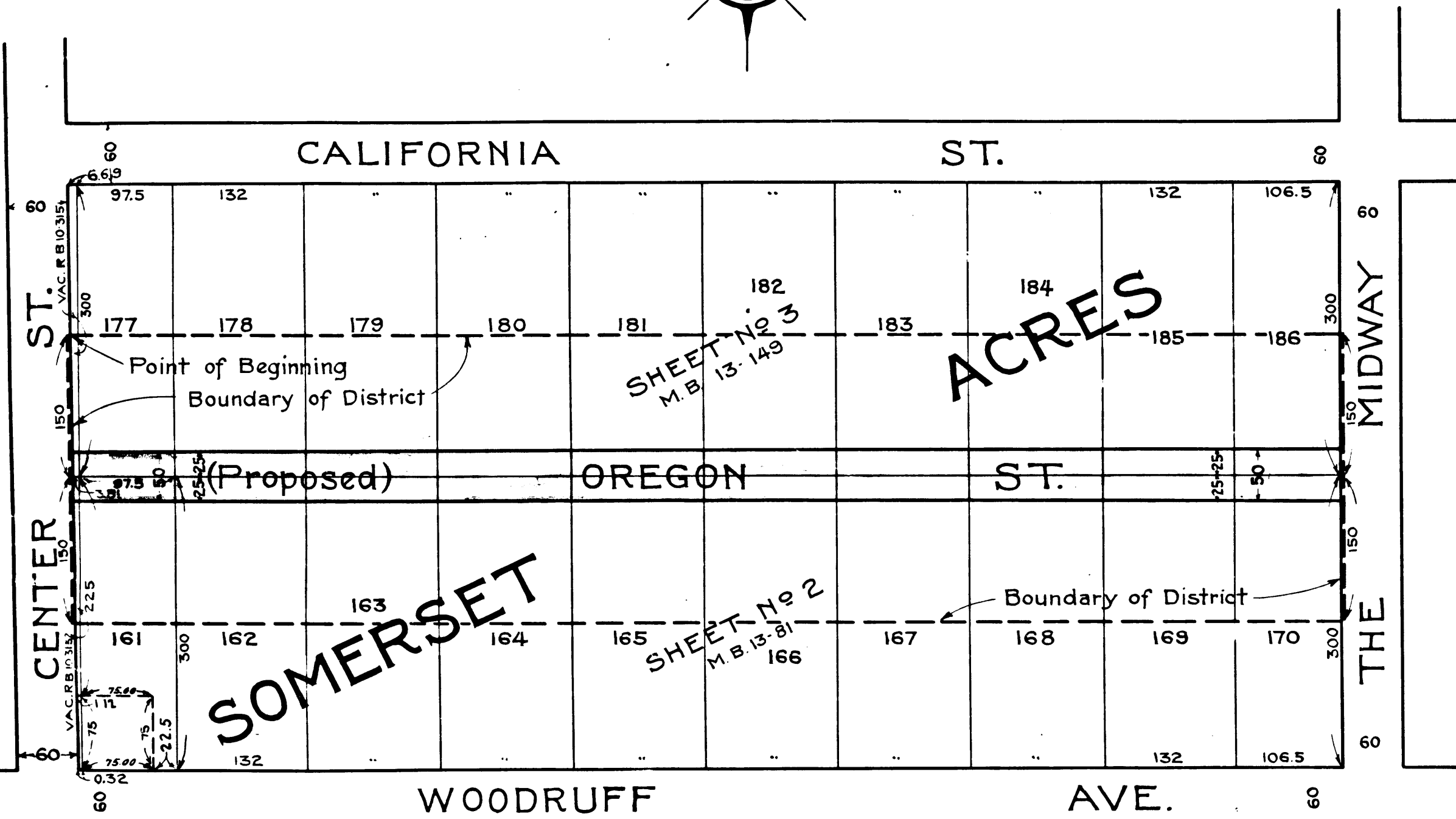
L.E. LAMPTON, County Clerk and
Ex-Officio Clerk of the Board of
Supervisors of said County of Los Angeles

by, *Name S. Beatty*
Deputy

Sht. # 33

C.F. 1276 -

O. & W. No 40	
Drawn by E. Van Wert	Ma
Traced by E. Van Wert	Ma
Checked by Haskell	Ma



A-483

Superior Court Case No. 174955
Suit for Condemnation
Filed July 24, 1925
County of Los Angeles, Pltff.
vs
Herman Anderson et al. Def.

Perina Aug 4 1925
interlocutory Decree rendered 4-15-26
Pending May 1st 1926
Final judgement in favor of Pltff. as per map.
Rendered December 27th 1926.

D: 58-22, O.R. 6105-107.

VENICO
PASADENA, CAL.

9 5 7

10TH

9 5 7

VENICO
PASADENA, CAL.

50TH