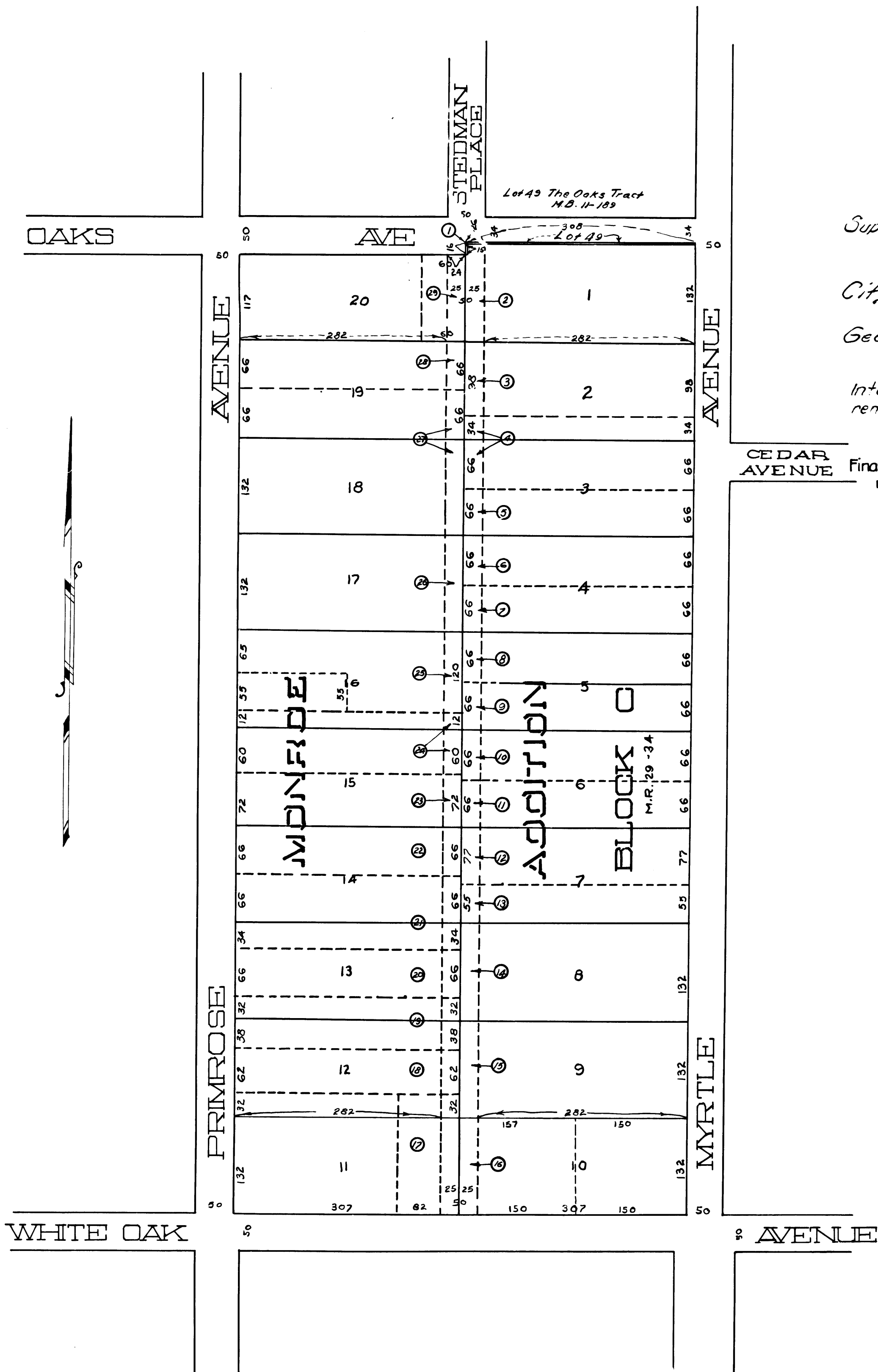


STEDMAN PLACE OPENING AND EXTENDING
BETWEEN
WHITE OAK AVENUE AND OAKS AVENUE
IN THE
CITY OF MONROVIA
Scale 1"=100'

OFFICE OF CITY ENGINEER

Note:-
Parcels sought to be condemned are designated
by numbers in circles -O
Land to be condemned is shown between heavily
dotted parallel lines from Oaks Avenue to White Oak Avenue



Superior Court Case No. 175877
 Suit for Condemnation
 Filed Aug. 5, 1925
 City of Monrovia, Pltff.
 Vs.
 George O. Monros, et al. Def.
 Pending May 1, 1926.
 Interlocutory judgment as per map,
 rendered Aug. 27th 1926
 Judg. Bk. 612-156
 Pending Apr. 8th 1927
 Final judgment in favor of Pltff. as per
 map rendered July 5, 1927
 Judg. Bk. 645-94

C.F. 1280-