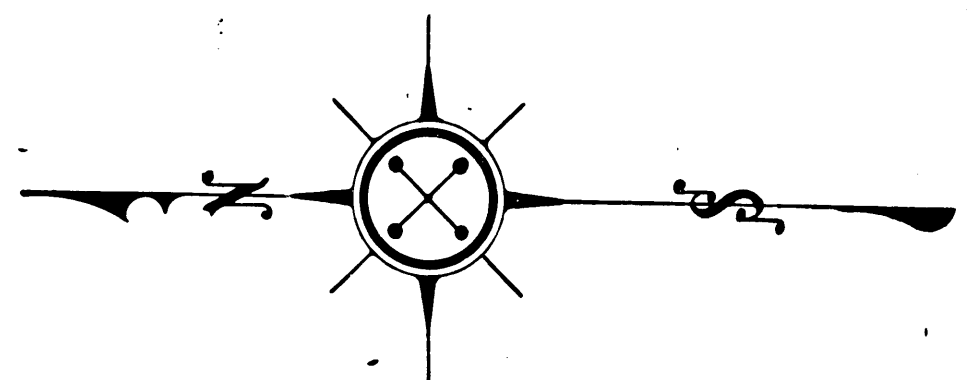


2-269



COUNTY  
STREET OPENING DISTRICT NO 21  
MAP OF  
PROPOSED OPENING, WIDENING & EXTENDING  
OF  
**TRURO AVENUE**  
BETWEEN  
THE NORTHERLY LINES OF LOTS 77 & 84 OF  
TRACT NO 957 & BELLEVIEW AVENUE  
SHOWING

The exterior boundary of the district to be assessed therefor under the provisions of the County Street Opening Act of 1923, Approved May 11, 1923.  
Scale 1" = 100' May, 1925  
J.E. ROCKHOLD, COUNTY SURVEYOR

Submitted: *Alfred Jones* Chief Deputy  
Approved: *J.E. Rockhold* County Surveyor

Approved as to form  
EDWARD T. BISHOP, COUNTY COUNSEL  
By *Conrad W. Mathison* Chief Deputy

LEGEND :-  
District Boundary Line -----  
Land sought to be condemned colored red

I hereby certify that the Board of Supervisors of Los Angeles County did, on the 18<sup>th</sup> day of May, 1925, by resolution duly adopted, approve the accompanying map of the assessment district of County Street Opening District No 21 of the County of Los Angeles for the opening, widening and extending of Truro Ave.

Filed May 18, 1925 in the office of the County Surveyor of Los Angeles County  
J.E. ROCKHOLD, COUNTY SURVEYOR  
by *M.F. Copr* Deputy

L.E. LAMPTON, County Clerk and Ex-Officio Clerk of the Board of Supervisors of said County of Los Angeles.  
by *Mame S. Beatty* Deputy

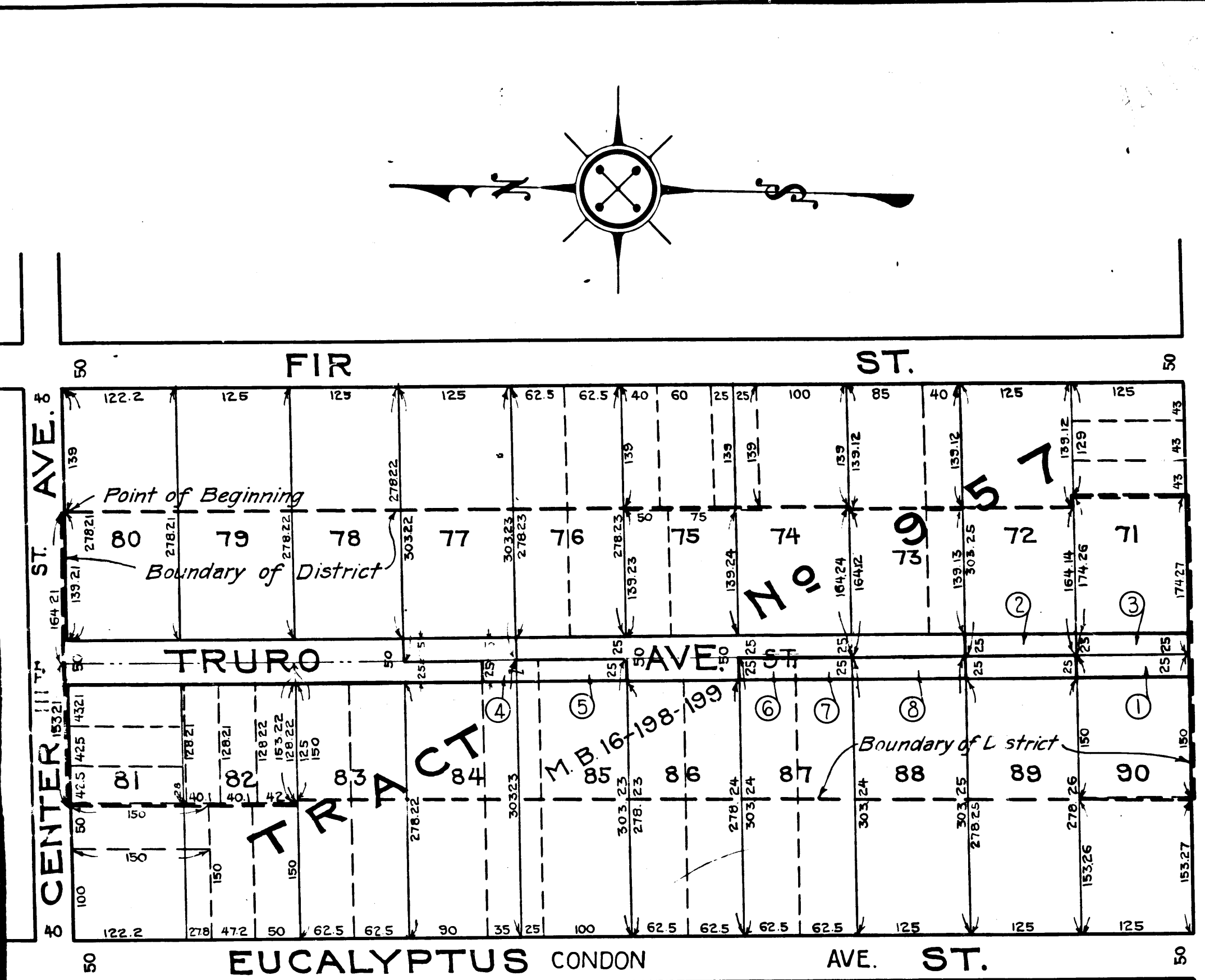
Interlocutory judgment as per map, rendered Feb. 3<sup>rd</sup> 1927  
Judg. Bk. 631-373  
Pending Apr. 7<sup>th</sup> 1927  
Final judgment in favor of Pltff. as per map, rendered December 13<sup>th</sup> 1927

D:64-34, O.R. 7805-43  
Sht. 24

Superior Court Case No. 177725  
Suit for Condemnation  
Filed Aug. 31, 1925  
County of Los Angeles, Pltff.  
Vs.  
Howard E. Aliff et al. Def.  
Pending May 1, 1925

C.F. 1281 -

S.O. DIST. NO 21  
Drawn by E. Van Wert  
Traced by E. Van Wert  
Checked by R.B. Heuer



MEMPHIS

MEMPHIS