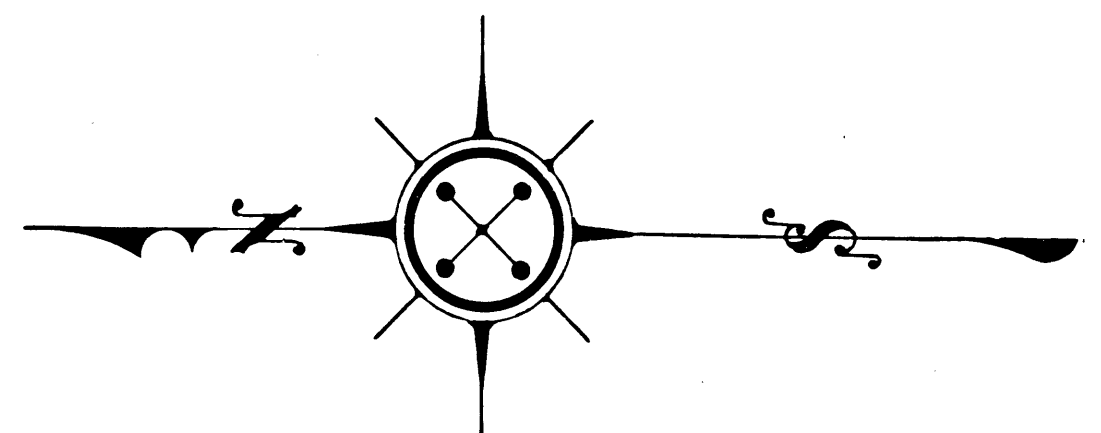


A-409



COUNTY
STREET OPENING DISTRICT No 49
MAP OF
PROPOSED OPENING, WIDENING & EXTENDING

OF
ACACIA AVENUE

BETWEEN
CENTER AVE. & BELLEVIEW AVE.
SHOWING

The exterior boundary of the district to be assessed therefor under
the provisions of the County Street Opening Act of 1923, Approved May 11, 1923
Scale 1"=100' May, 1925
J.E. ROCKHOLD, COUNTY SURVEYOR

Submitted: *Alfred Jones* Chief Deputy Approved: *J.E. Rockhold* County Surveyor

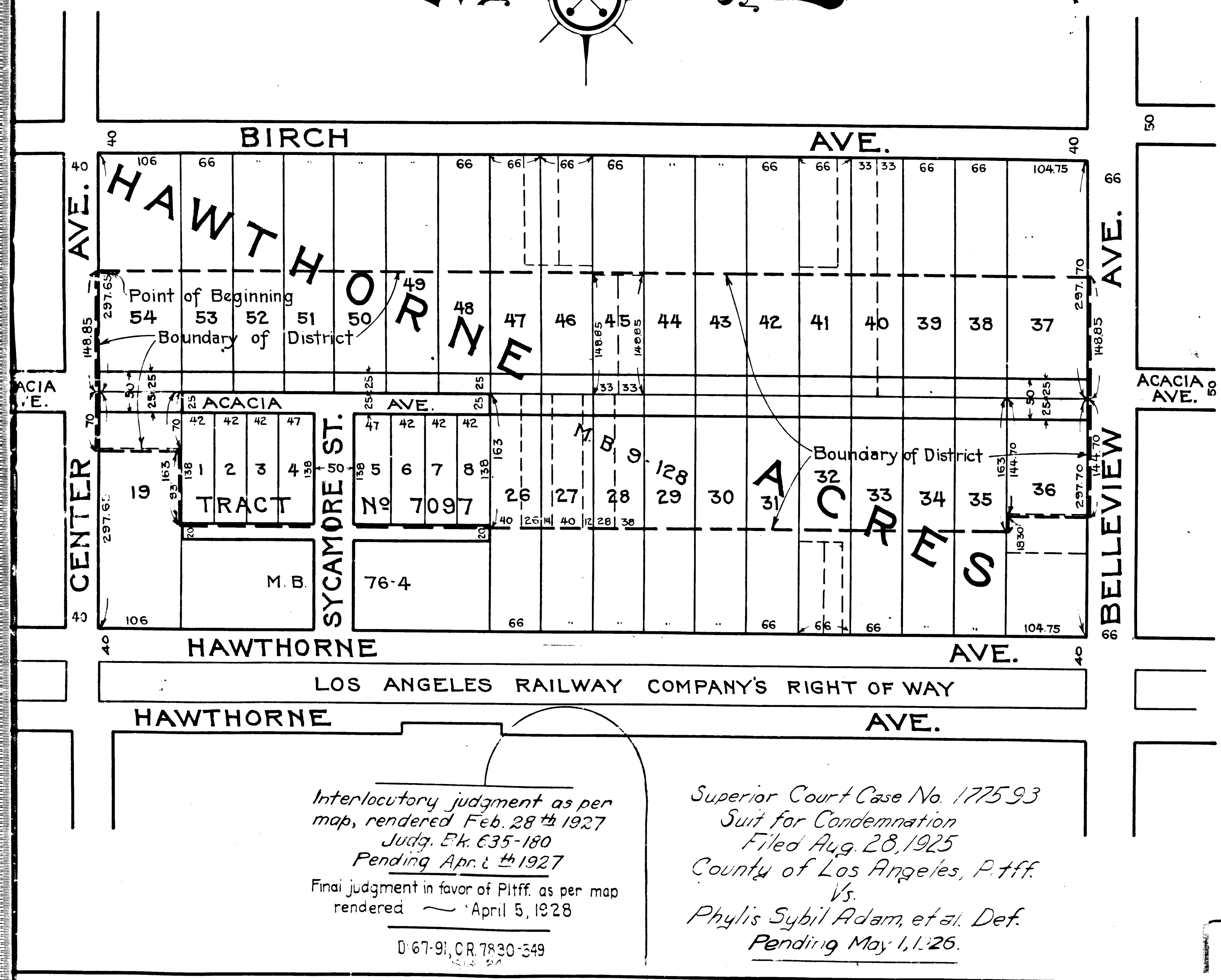
Approved as to form
EDWARD T. BISHOP, COUNTY COUNSEL
By: *Edward T. Bishop* Chief Deputy

LEGEND:-
District Boundary Line _____
Land sought to be condemned colored red

I hereby certify that the Board of Supervisors of Los Angeles
County did, on the 18th day of May, 1925, by resolution duly
adopted, approve the accompanying map of the assessment district
of County Street Opening District No 49 of the County of Los-
Angeles for the opening, widening and extending of Acacia Ave.

Filed May 18, 1925, in the
office of the County Surveyor
of Los Angeles County.
J.E. ROCKHOLD, COUNTY SURVEYOR
by *H.F. Cobb* Deputy

L.E. LAMPTON, County Clerk
and Ex-Officio Clerk of the
Board of Supervisors of said
County of Los Angeles
by *Name B. Beatty* Deputy



*Interlocutory judgment as per
map, rendered Feb. 28th 1927
Judg. Ek. 635-180
Pending Apr. 2th 1927
Final judgment in favor of Plfff. as per map
rendered April 5, 1928*

D: 67-91, CR. 7830-349

*Superior Court Case No. 1775-93
Suit for Condemnation
Filed Aug. 28, 1925
County of Los Angeles, P.iff.
Vs.
Phylis Sybil Adam, et al. Def.
Pending May 1, 1926.*

C.F. 1284 -

S.O. DIST. No 49
Drawn by E. Van Wert
Traced by E. Van Wert
Checked by R. B. Heuser

VENICO

VENICO

957

957