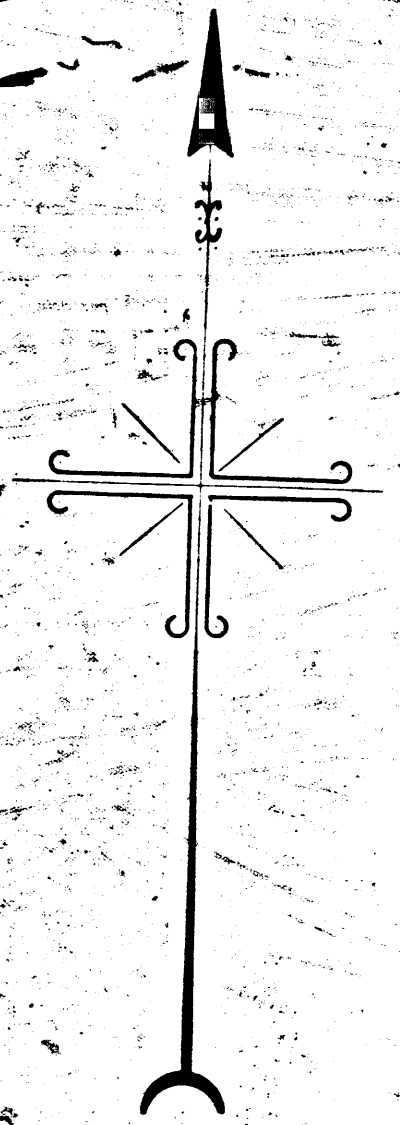
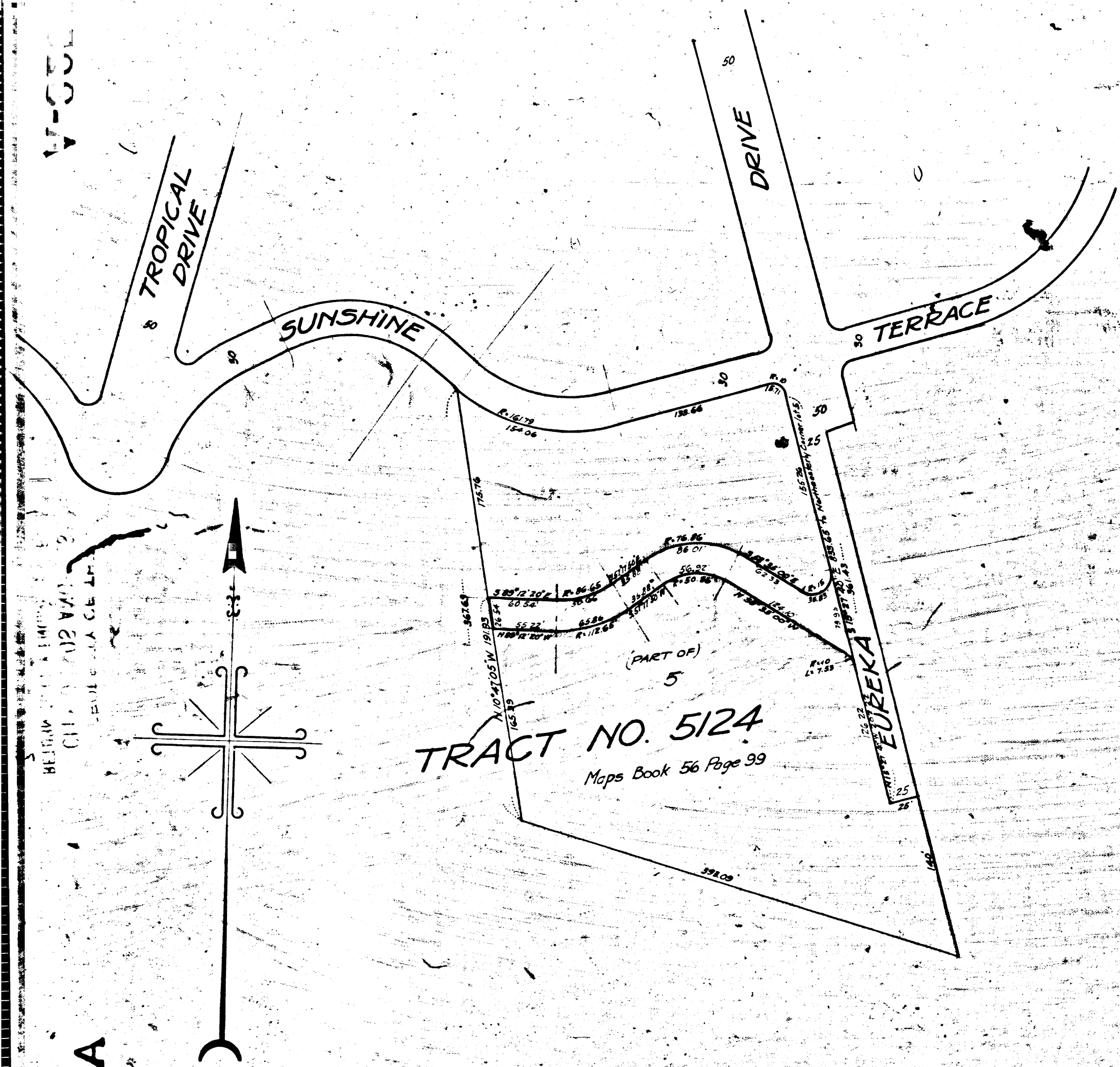


12531-A

12531-A

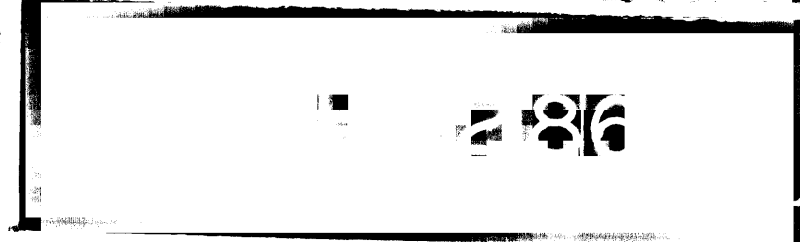


MAP
 SHOWING THE LAND TO BE CONDEMNED
 FOR THE OPENING OF A
 NEW STREET
 TO BE KNOWN AS
BRILL DRIVE
 SOUTHERLY OF SUNSHINE TERRACE
 AND EXTENDING FROM
 EUREKA DRIVE
 TO
 A POINT THREE HUNDRED FORTY (340) FEET WESTERLY THEREFROM
 IN THE
 CITY OF LOS ANGELES CAL.

IN ACCORDANCE WITH ORDINANCE NO. 52570
 JOHN C. SHAW City Engineer AUGUST 1925
 SCALE 1 INCH = 80 FEET

Superior Court Case No. 177837
 Suit for Condemnation
 Filed Sep. 1, 1925
 City of Los Angeles, Plff.
 Vs
 Title Ins. & Trust Co. et al. Def.

Pending Sept. 28, 1925
 Final Judgment in favor of Plff. as per
 map, rendered March 7, 1926
 D: 54-11 QR: 5577-399



12531-A

12531-A

CITY OF LOS ANGELES
 DEPARTMENT OF PUBLIC WORKS