

MAP
 SHOWING THE LAND TO BE CONDEMNED
 FOR THE WIDENING OF
GOWER STREET
 BETWEEN
HOLLYWOOD BOULEVARD
 AND
SANTA MONICA BOULEVARD
 IN THE
CITY OF LOS ANGELES, CAL.

IN ACCORDANCE WITH ORDINANCES NOS. 51557 (NEW SERIES) AND 52388

SCALE IN FEET

H. A. VAN NORMAN CITY ENGINEER. JUNE 1925

A-3226

Note
 Land to be condemned shown colored red
 Dotted lines and dimensions show property
 holdings in those cases where they differ
 from recorded subdivisions.

Superior Court Case No. 177839
 Suit for Condemnation
 Filed Sept. 1, 1925
 City of Los Angeles, Pl'ff.
 Vs.
 George T. Gower, et al. Def.
 Pending Sept. 28, 1925
 Pending May 1, 1926.
 Interlocutory judgment as per map,
 rendered March 12th 1927
 Judg. Bk. 640-103
 Pending Apr. 8th 1927
 Final judgment in favor of Pl'ff. as
 per map, rendered July 25, 1928.

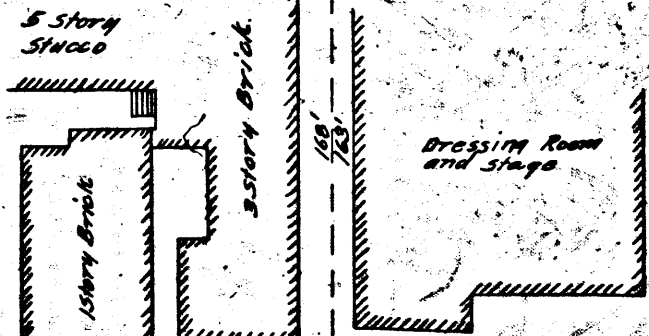
D: 65-294, O.R. 7260-13

DE LONGPRE AVENUE

COLE GROVE

Miscellaneous Records, Book 53 Page 10

Part 2 of Block 1



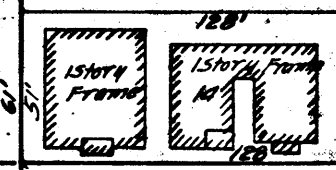
BOULEVARD

BLONDEAU

Maps, Book

TRACT

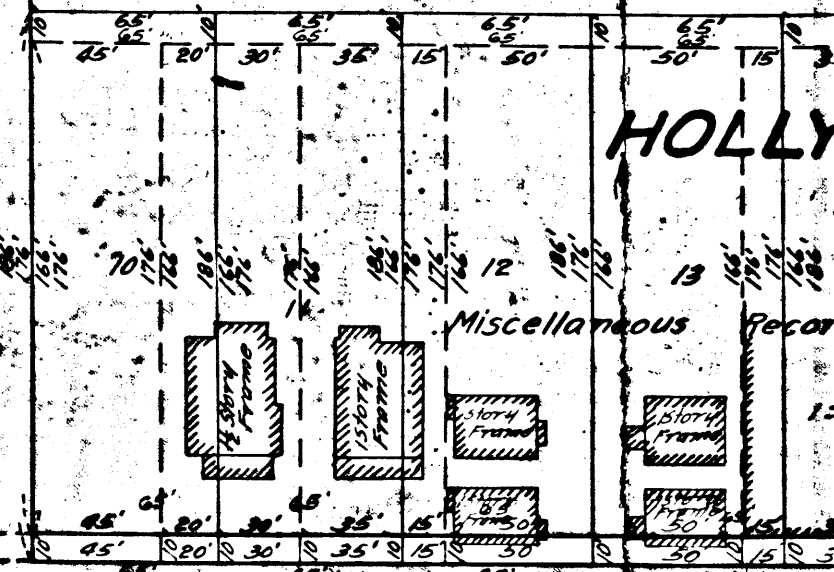
M Page 78.



SELMA AVENUE

HOLLY

Miscellaneous Record



GOWER

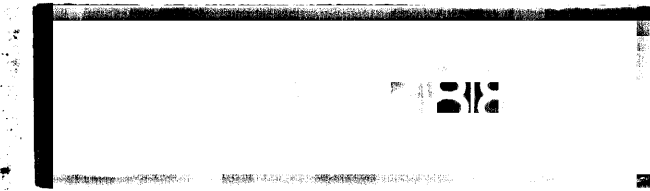
PART OF THE SOUTHWEST QUARTER OF SECTION 11 TOWNSHIP 1 SOUTH RANGE 14 WEST S.B.B. AND M.

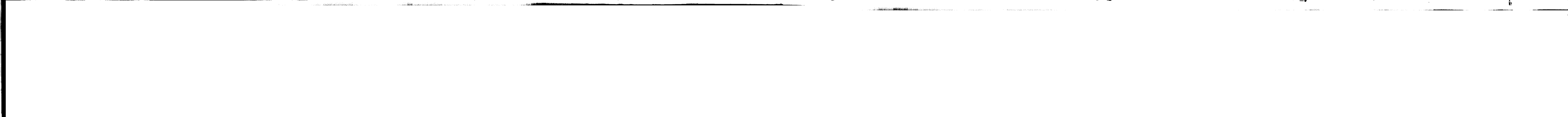
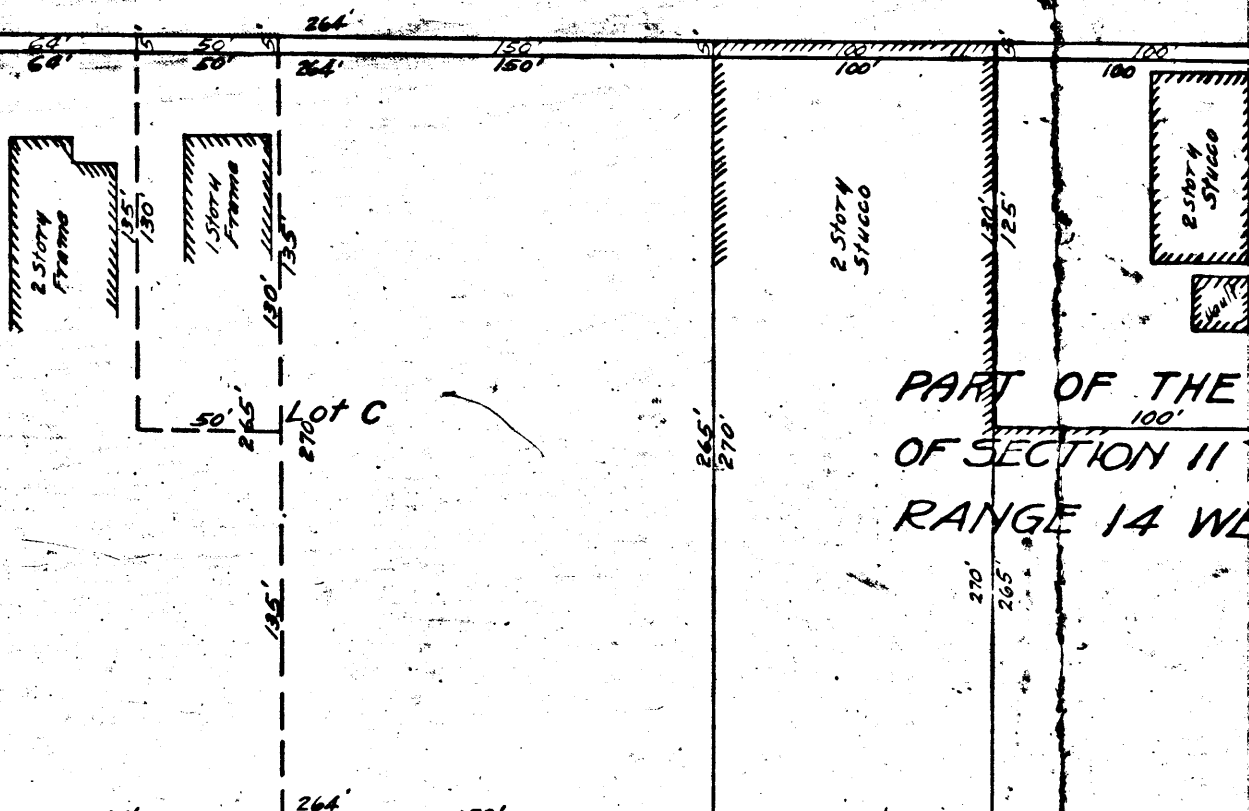
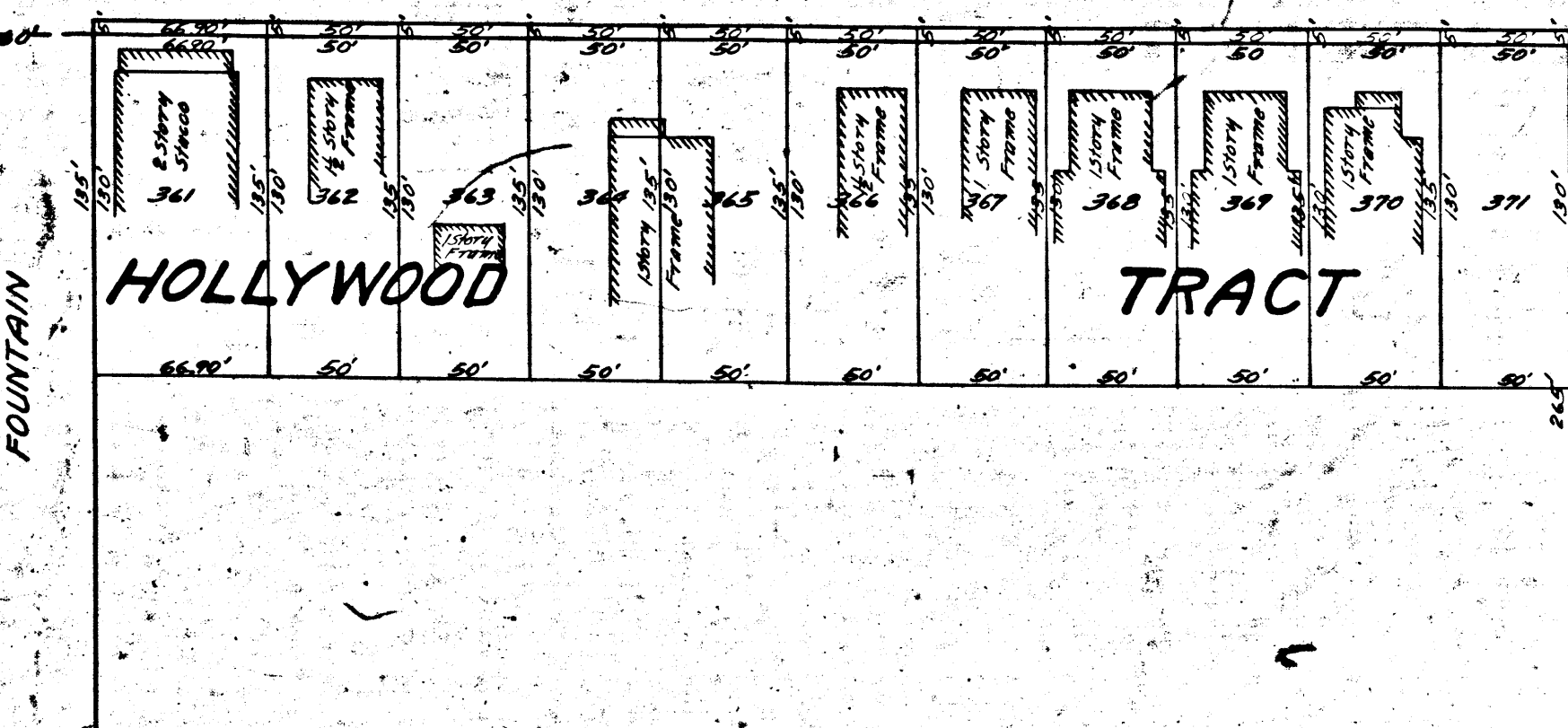
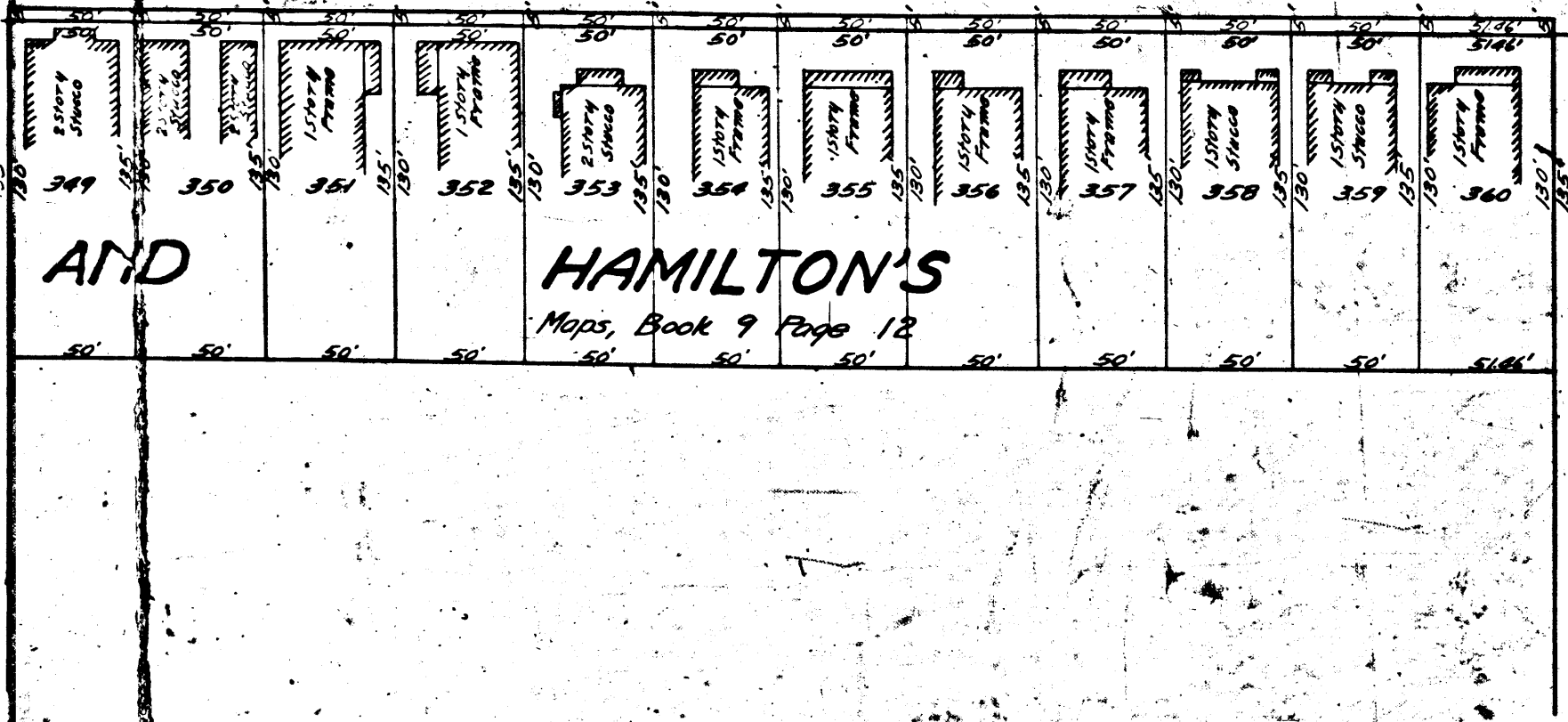
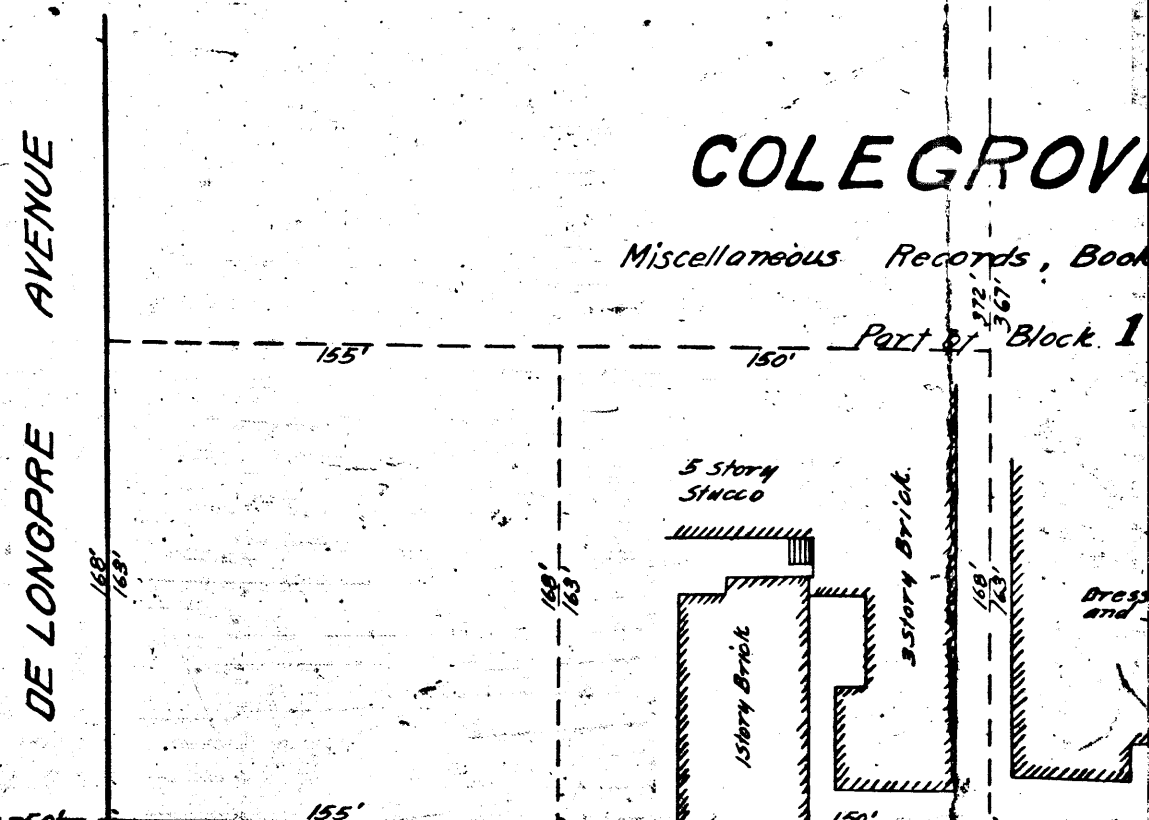
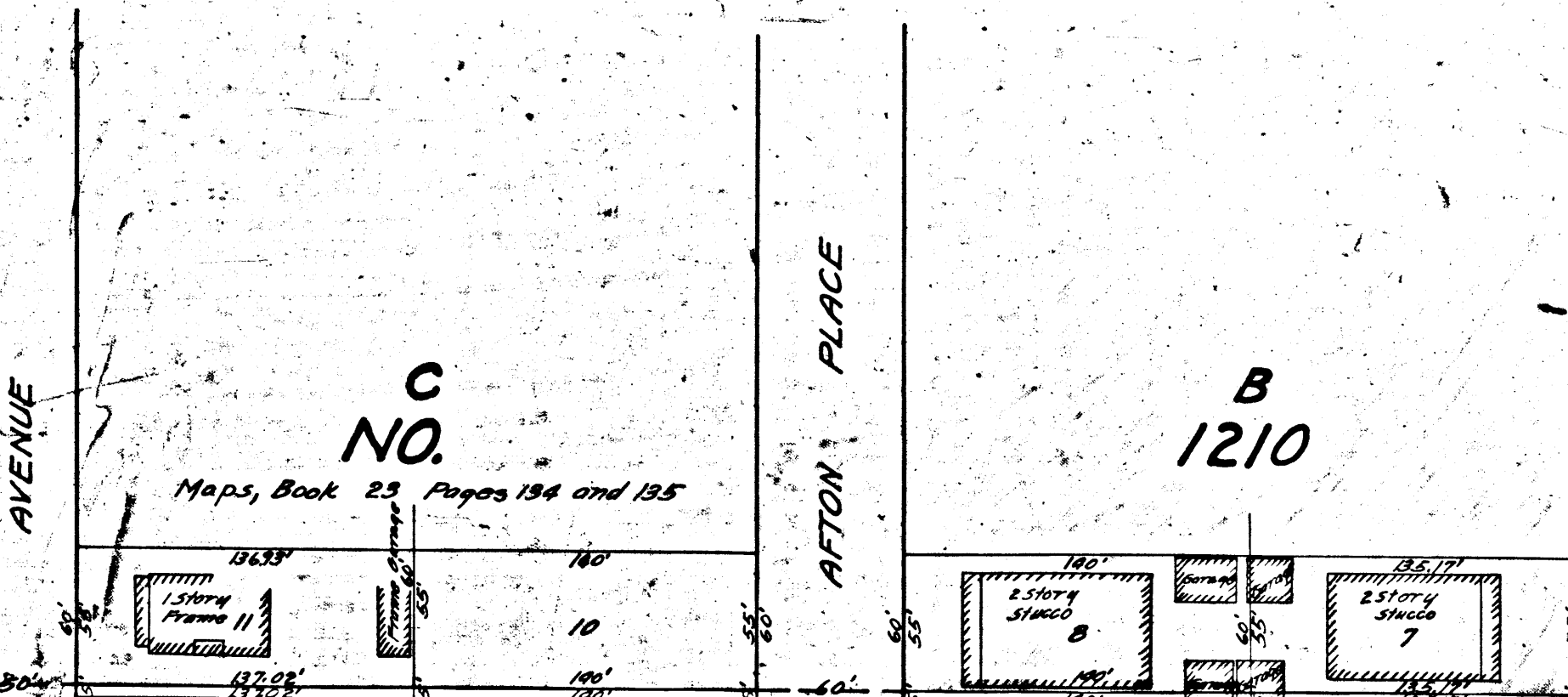
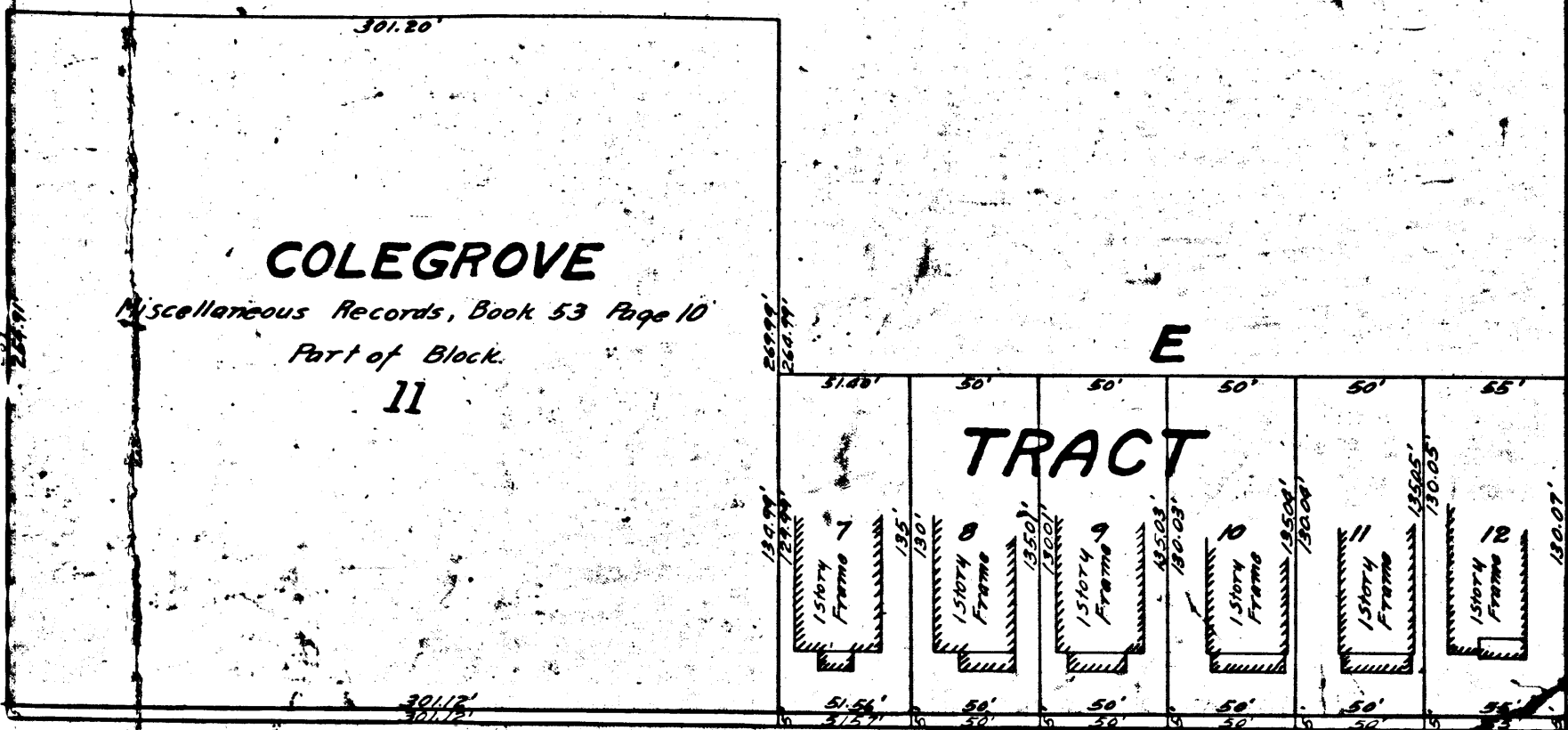
SUNSET

SALEM

SELMA AVENUE

CARLTON WAY



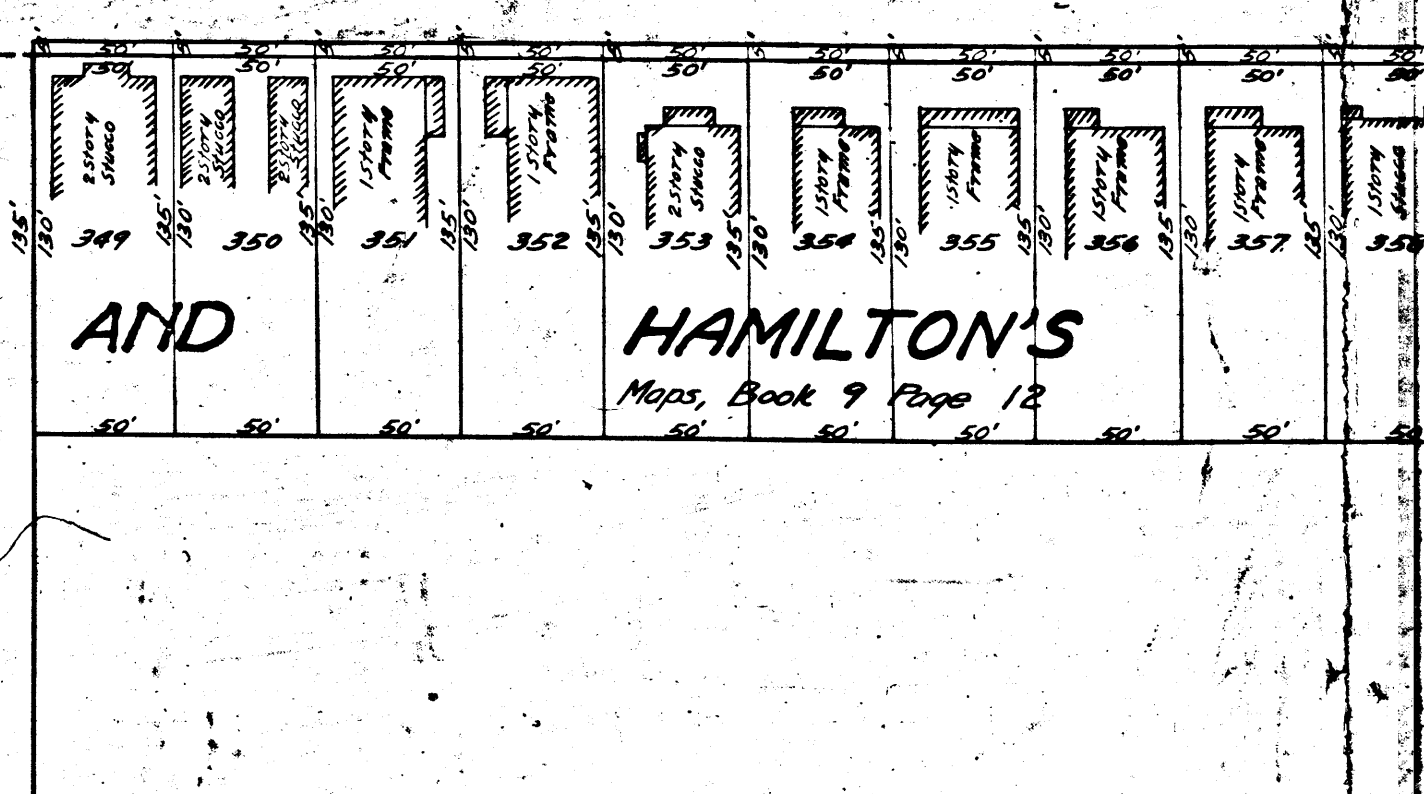
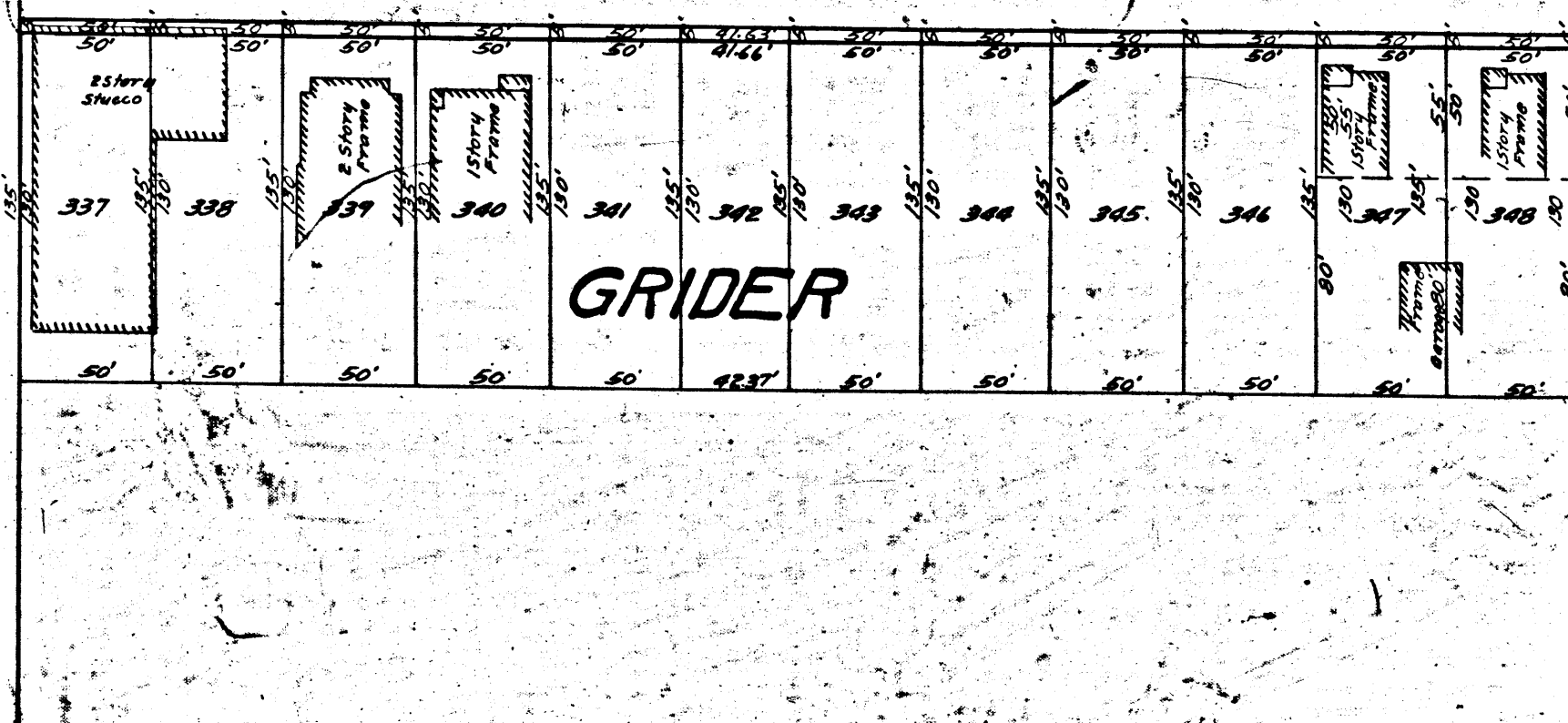
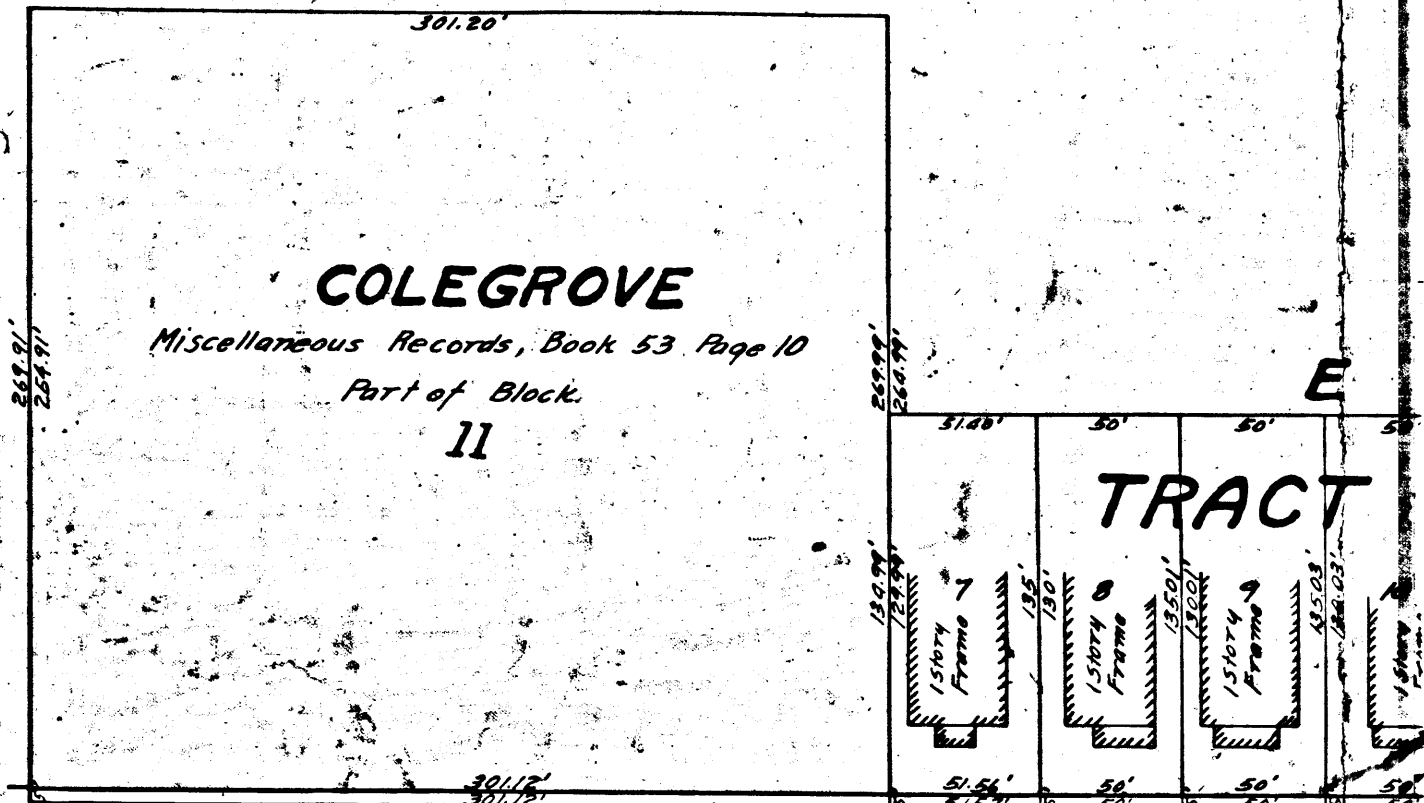
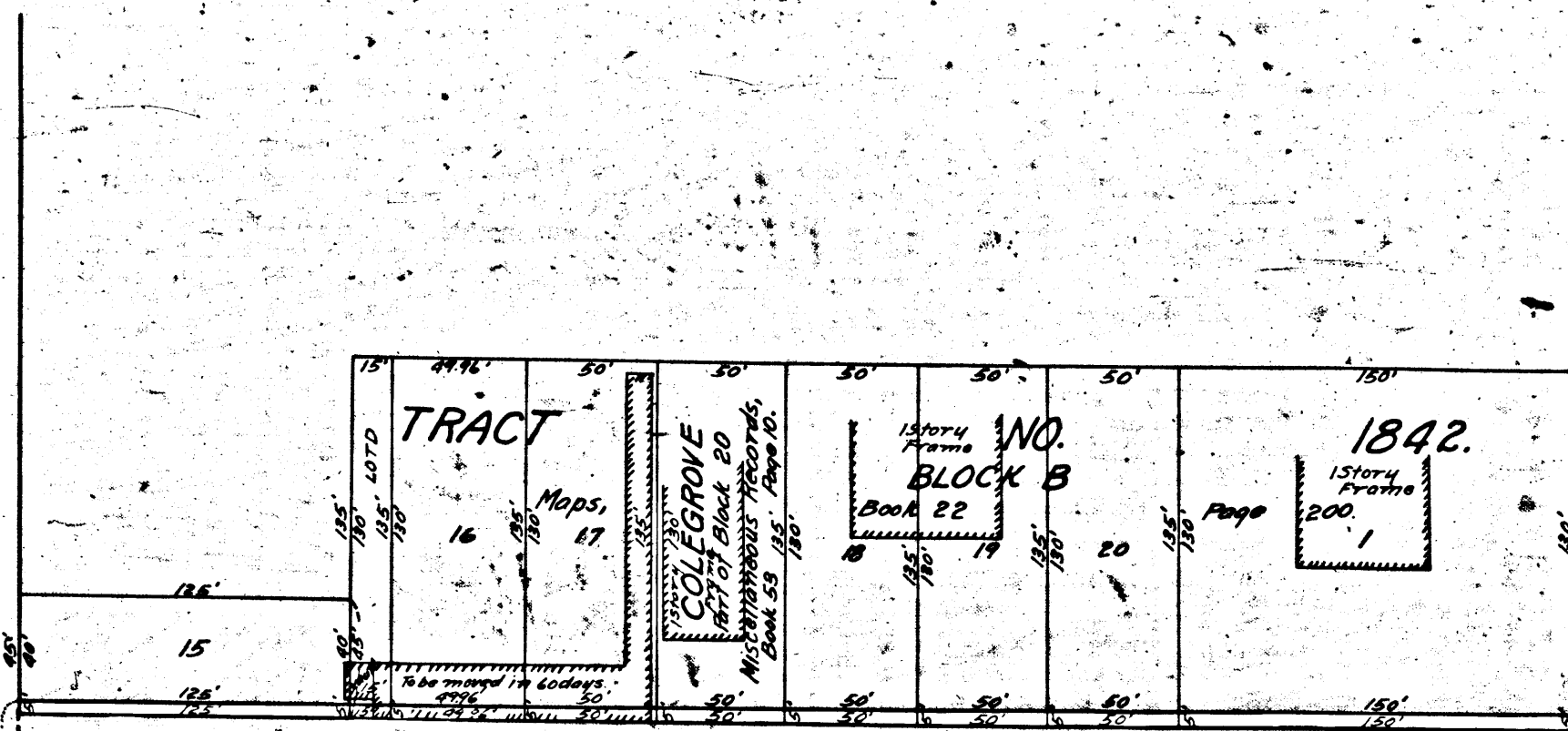


BOULEVARD

SANTA MONICA

AVENUE

LEXINGTON



GOWER