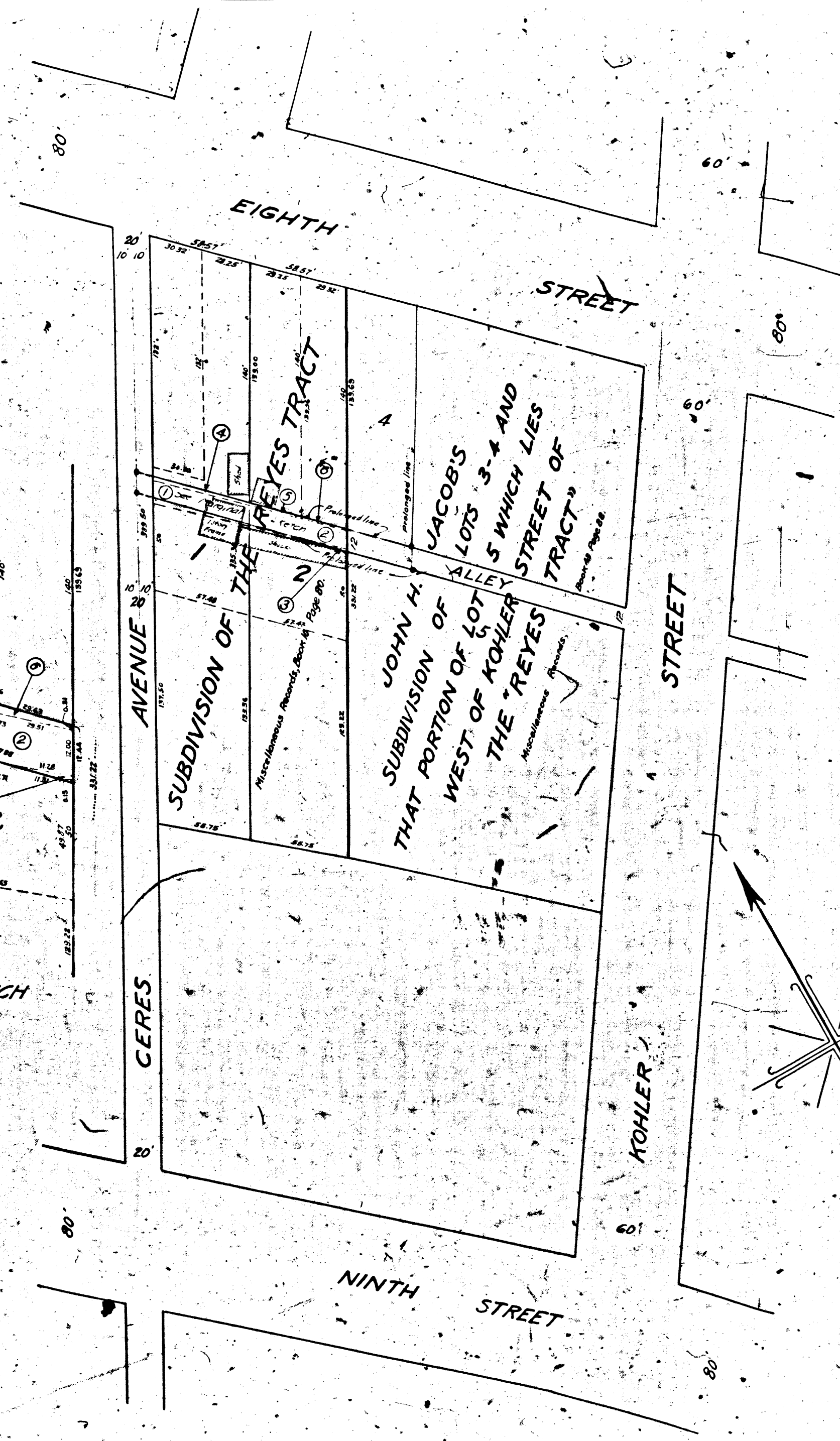


V-355-A

MARGINAL SKETCH
NOT DRAWN TO SCALE

RETURN TO CIVIL ENGINEER'S OFFICE
CITY OF LOS ANGELES
PROPERTY OF THE

V-355-A



Superior Court Case No. 17,199
 Suit for Condemnation
 Filed Sep. 4, 1925
 City of Los Angeles, Pltff.
 Vs
 Charles E. Marshall et al. Def.

Permitting Sept. 29, 1925
 Pending May 1, 1926.
 Interlocutory judgment as per map, rendered Aug. 3rd 1926 - Judg. Bk. 608-395
 Pending Apr. 8th 1927
 Final judgment in favor of Pltff. as per map, rendered November 2nd, 1927.

D:61-282, O.R. 7765-137
 SH. 3

MAP
 SHOWING THE LAND TO BE CONDEMNED
 FOR THE OPENING AND EXTENDING
 OF THE FIRST
ALLEY
 SOUTHWESTERLY OF EIGHTH STREET
 BETWEEN
 KOHLER STREET AND CERES AVENUE
 IN THE
 CITY OF LOS ANGELES, CAL

IN ACCORDANCE WITH ORDINANCES NOS. 51442 AND 52120 (NEW SERIES)
 H. A. VAN NORMAN, CITY ENGINEER AUGUST 1925
 SCALE 1 INCH = 30 FEET

Note: Land to be condemned shown colored red
 Broken lines and figures show property holdings
 in cases where they differ from recorded subdivisions.

322
 The figures in circles indicate the parcel numbers as set forth
 in paragraph IX of the complaint.

RETURN TO CIVIL ENGINEER'S OFFICE
 CITY OF LOS ANGELES
 PROPERTY OF THE

V-355-A