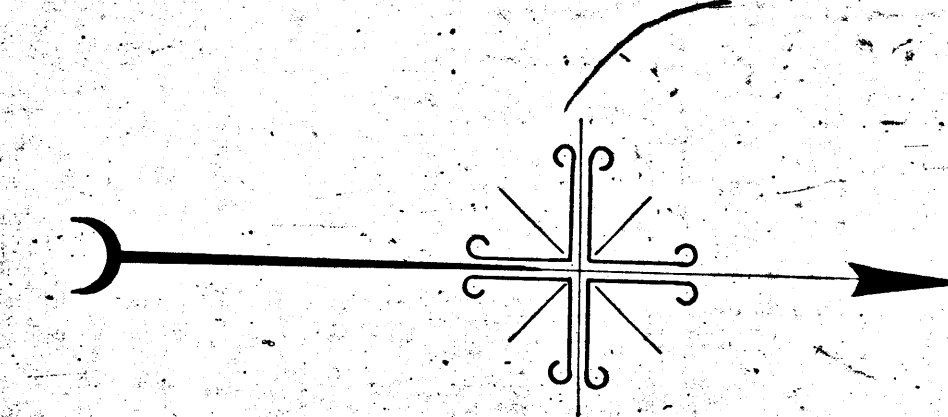


MAP
 SHOWING THE LAND TO BE CONDEMNED
 FOR THE WIDENING OF
MARINE AVENUE
 BETWEEN
 THE SOUTHERLY LINE OF ANAHEIM STREET
 AND
 THE NORTHERLY LINE OF "A" STREET
 (WILMINGTON)
 IN THE
 CITY OF LOS ANGELES, CAL

IN ACCORDANCE WITH ORDINANCES NOS 50706 AND 51509 (NEW SERIES)
 H.A. VAN NORMAN CITY ENGINEER MARCH 1925
 SCALE 1 INCH = 100 FEET

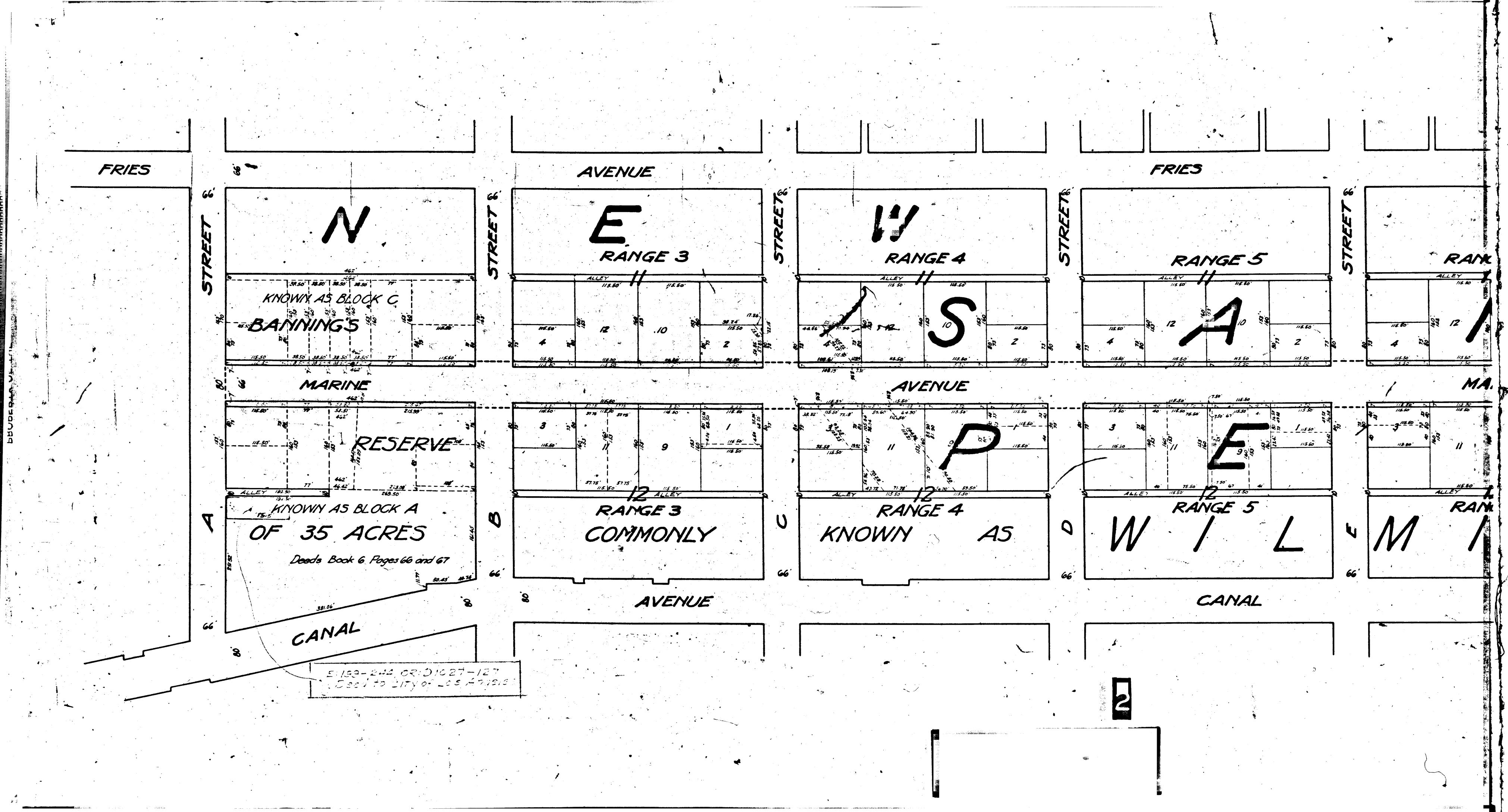
*Note: Land to be condemned shown colored red
 Broken lines and figures show holdings in these
 cases where they differ from recorded subdivisions.*



Interlocutory decree rendered June 17, 1927
 Judg. Book 643-132.
 Final judgment in favor of Pl'ff. as per
 map, rendered Sept. 5, 1928.
 D:70-51, O.R. 7289-185
 Sht. 28

Superior Court Case No. 176754
 Suit for Condemnation
 Filed Aug. 17, 1925
 City of Los Angeles, Pl'ff.
 Vs.
 Sophia L. Blawett, et al. Def.
 Pending Sep. 9, 1925
 Pending May 1, 1927
 Pending Apr. 1, 1927

CITY OF LOS ANGELES
 PROPERTY DEPARTMENT
 MAP 305-A



FRIES

AVENUE

FRIES

STREET 66

STREET 67

STREET 68

STREET 69

STREET 70

N

E

W

RANGE 5

RANGE 6

KNOWN AS BLOCK C
BANNING'S

11
4 12 10 2

11
10 2

11
12 A 10 2

11
4 12

MARINE

AVENUE

MA

RESERVE

12
3 9 1

11
11 P

11
3 11 E 9 11

11
3 11

KNOWN AS BLOCK A
OF 35 ACRES

RANGE 3
COMMONLY

RANGE 4
KNOWN AS

RANGE 5
W I L

RANGE 6
M I

Deeds Book 6, Pages 66 and 67

AVENUE

CANAL

CANAL

E 159-244, GR: D1627-127
Dec 7 to City of Los Angeles

2