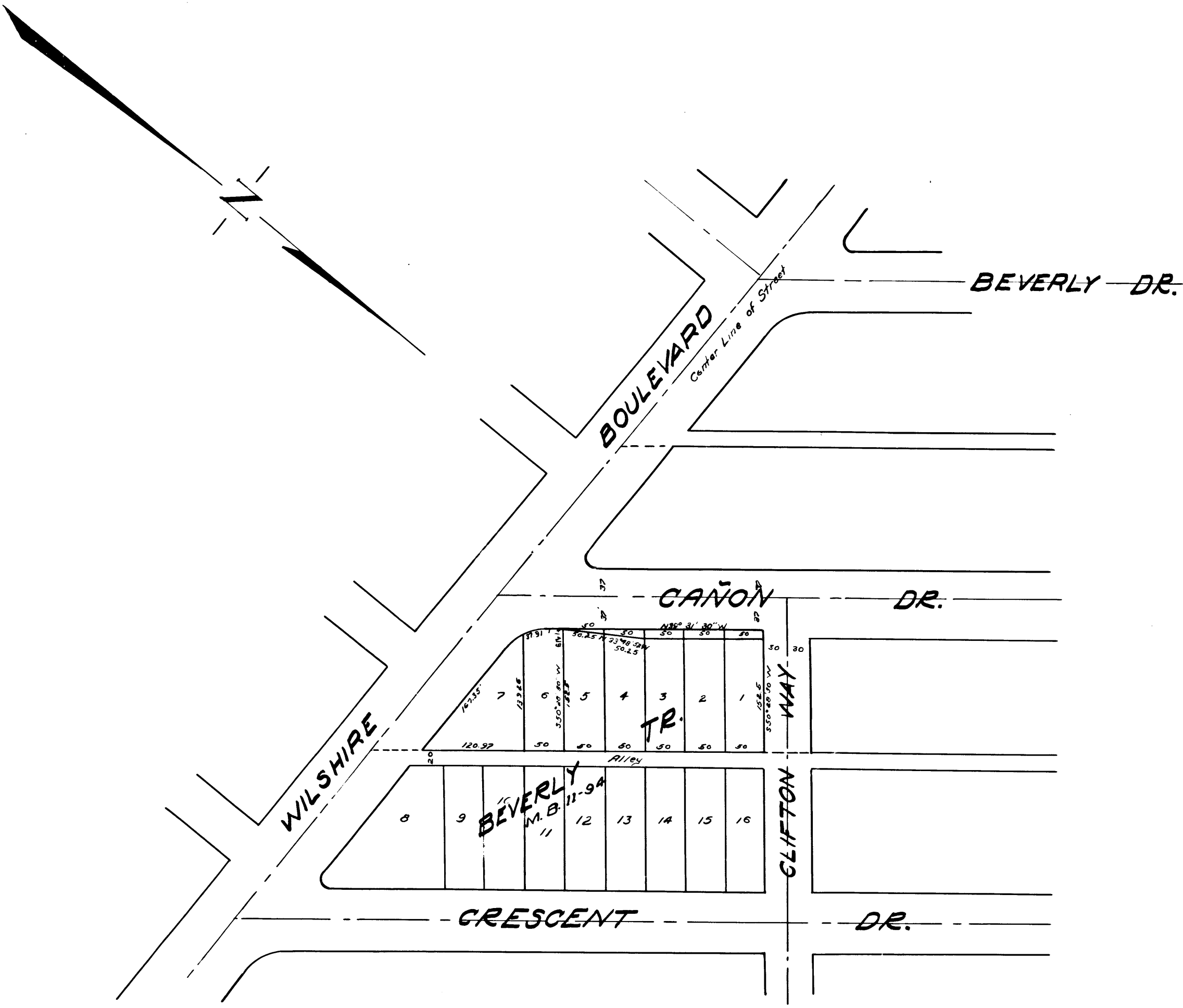


MEMCO PASADENA CALIF. 957

MEMCO PASADENA CALIF. 957



MAP FOR WIDENING OF  
**CAÑON DRIVE**  
 BETWEEN WILSHIRE BOULEVARD AND CLIFTON WAY  
 IN THE CITY OF BEVERLY HILLS  
 LOS ANGELES COUNTY, CALIFORNIA

Scale 1"=100'

Property to be condemned tinted red

Note:- This map is part of map filed with Superior Court Case 178756

Superior Court Case No. 178756  
 Suit for Condemnation  
 Filed Sep. 15, 1925  
 City of Beverly Hills, Piff.  
 Vs.  
 Adam Heumeier et al. Def.  
 Pending May 1, 1926  
 Case dismissed June 11<sup>th</sup> 1926

C.F. 1293-