

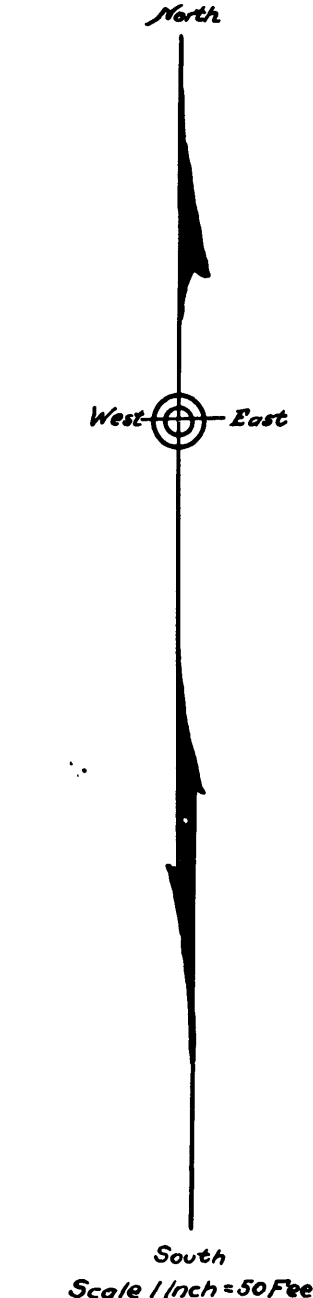
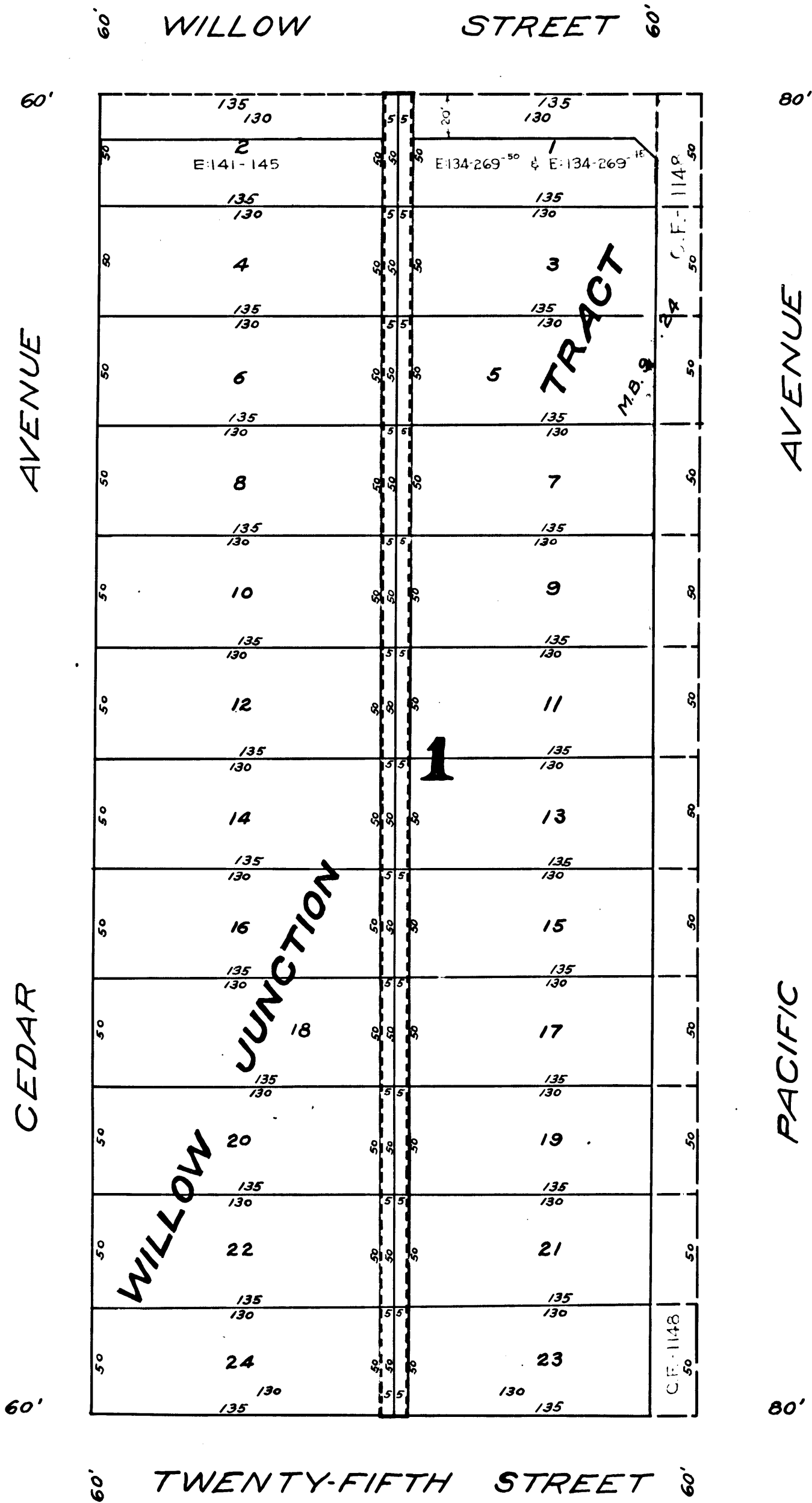
Superior Court Case No 180913
 Suit for Condemnation
 Filed Oct. 14th 1925
 City of Long Beach, Plaintiff,
 Vs.
 Charles J. Daugherty et al. Def.

Pending Mar., 1926.
 Interlocutory judgment as per map,
 rendered July 7th 1926
 Judg. Blk. 611-33
 Pending Apr. 7th 1927
 Final judgment in favor of Pltff as per
 map, rendered April 30, 1927.

D:59-116 - O.R. 6604-298.

Sht. 30

C.F. 1295-



LAND TO BE TAKEN OUTLINED IN RED