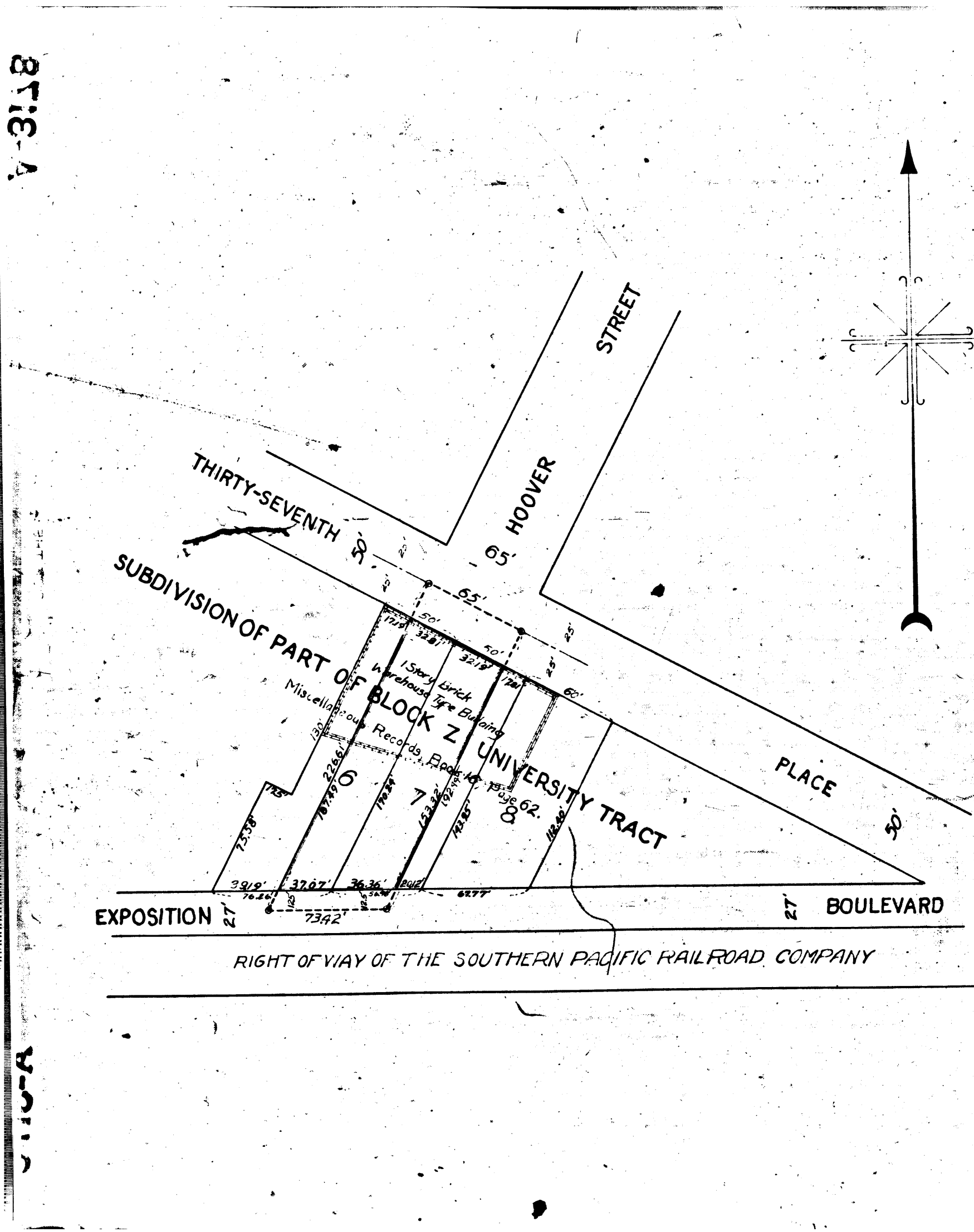


7-3118



MAP
 SHOWING THE LAND TO BE CONDEMNED
 FOR THE
 OPENING AND EXTENDING
 OF
HOOVER STREET
 BETWEEN
 THIRTY-SEVENTH PLACE
 AND
 EXPOSITION BOULEVARD
 IN THE
 CITY OF LOS ANGELES, CAL.

IN ACCORDANCE WITH ORDINANCES NOS. 51390 and 52,108 (NEW SERIES)
 HAVAN NORMAN, CITY ENGINEER JUNE, 1925
 Scale 1 Inch = 50 Feet
 Note: Land to be condemned shown colored red

Superior Court Case No. 180962
 Suit for Condemnation
 Filed Oct. 14, 1925
 City of Los Angeles, Plaintiff,
 Vs.
 Max. Neft, et al. Def.

Interlocutory decree rendered 3-12-26
 Pending May 1st 1926
 Judgment Book 604-245
 Final judgment in favor of Plaintiff,
 as per map rendered Feb. 10, 1927.
 D-57-165 O.R. 4750-22

110-A

