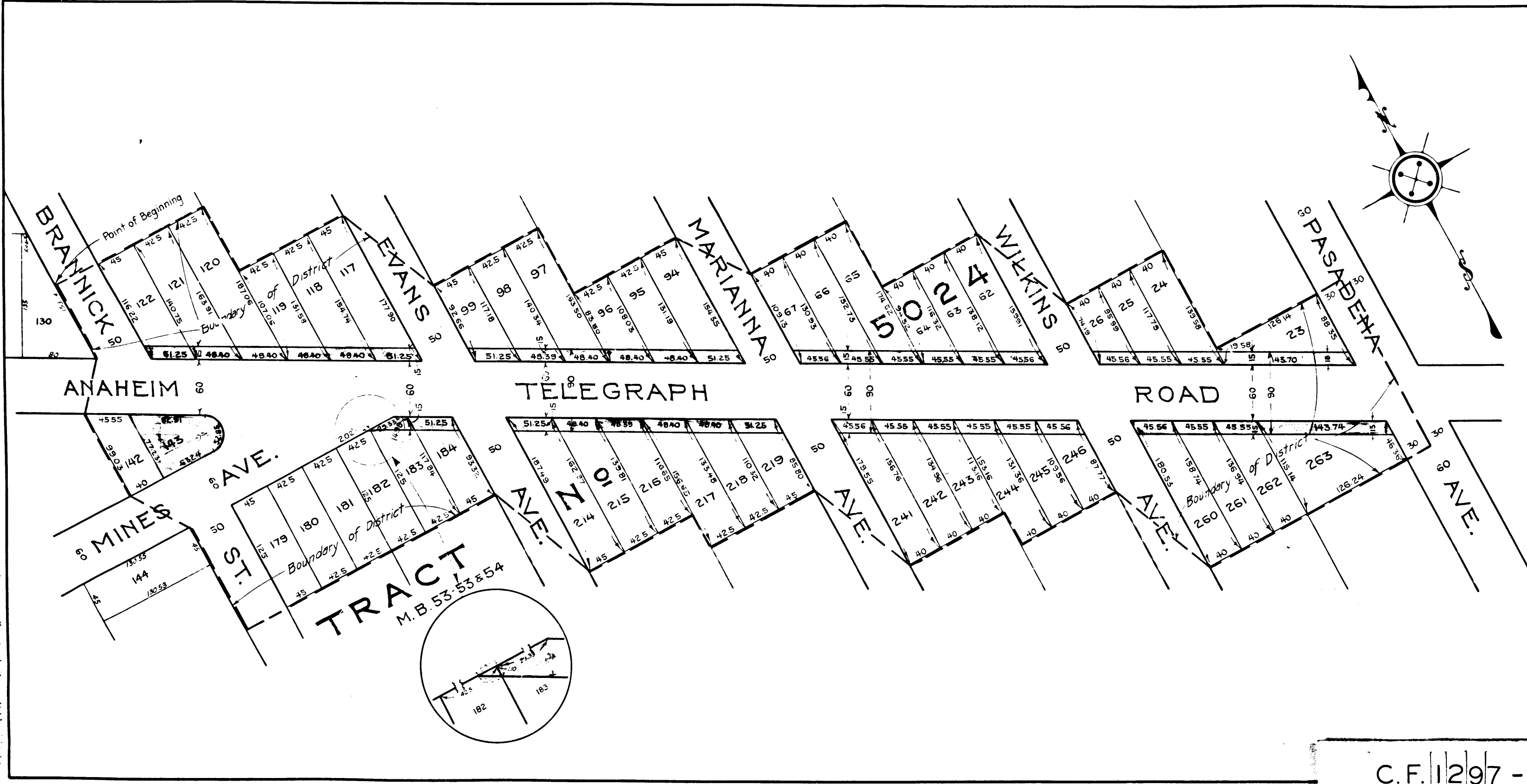


VENCO
PACIFIC

957

VENCO
PACIFIC

957



COUNTY
STREET OPENING DISTRICT NO 54
MAP OF
PROPOSED WIDENING
OF
ANAHEIM TELEGRAPH ROAD

BETWEEN PASADENA AVENUE AND THE
PROLONGATION OF THE WESTERLY LINE OF BRANNICK ST.
SHOWING

The exterior boundary of the district to be assessed therefor under
the provisions of the County Street Opening Act of 1923, Approved May 11, 1923
Scale 1" = 60' June 1925
J.E. ROCKHOLD, COUNTY SURVEYOR

Submitted: *Alfred Jones* Chief Deputy Approved: *J.E. Rockhold* County Surveyor

Approved as to form
EDWARD T. BISHOP, COUNTY COUNSEL
By *Edward T. Bishop* Chief Deputy

LEGEND:-
District Boundary Line
Land sought to be condemned colored red

I hereby certify that the Board of Supervisors of Los Angeles
County did, on the 15 day of June 1925 by resolution duly
adopted, approve the accompanying map of the assessment district
of County Street Opening District No 54 of the County of Los
Angeles for the widening of Anaheim Telegraph Road

Filed June 15th, 1925, in the
office of the County Surveyor
of Los Angeles County,
J.E. ROCKHOLD, COUNTY SURVEYOR
by *Alfred Jones*
Deputy

L.E. LAMPTON, County Clerk
and Ex Officio Clerk of the
Board of Supervisors of said
County of Los Angeles.
by *Mame B. Reedy*
Deputy

Superior Court Case No. 179071
Suit for Condemnation
Filed Sept. 18, 1925
County of Los Angeles, Plaintiff
vs.
J. N. Coulter et al. Defendants.

S.O.D. No 54	
Drawn by <i>Evon Wart</i>	June 25
Traced by <i>Evon Wart</i>	June 25
Checked by <i>Alfred Jones</i>	June 25

C.F. 1297 -