

CITY HUNTINGTON PARK  
CALIFORNIA

PLAN N<sup>o</sup> 179

OF  
LANDS PROPOSED TO BE TAKEN FOR  
THE WIDENING OF NORTH & SOUTH  
RANDOLPH STREETS IN SAID CITY

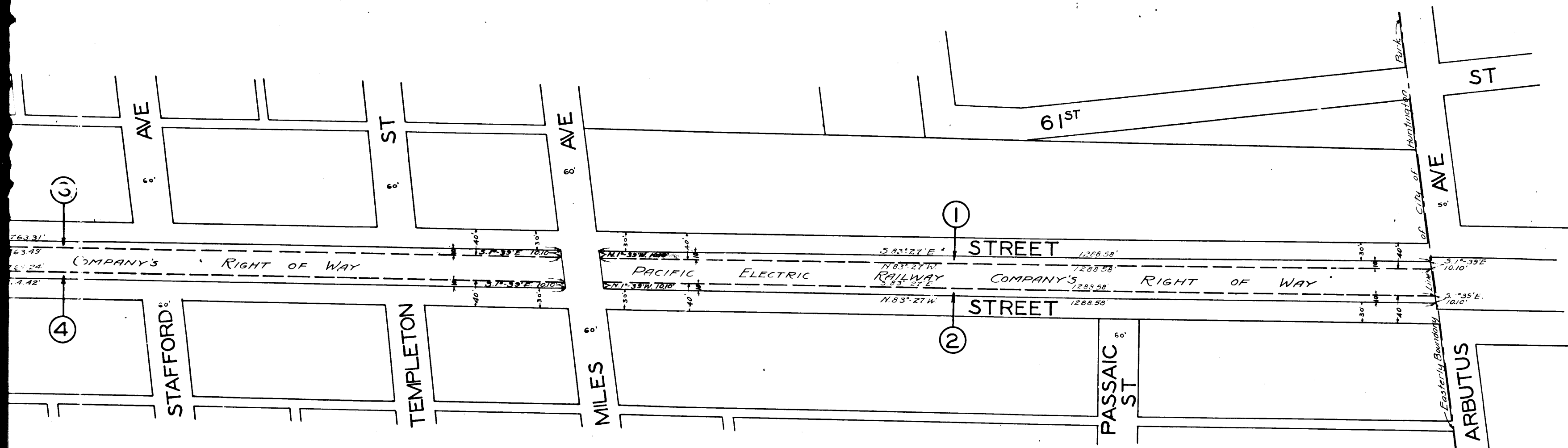
SCALE 1" = 100'

JANUARY 1925

PAUL E. KRESSLY  
CITY ENGINEER

Superior Court Case No. 180184  
Suit for Condemnation  
Filed Oct. 2<sup>nd</sup> 1925  
City of Huntington Park, Pltff.  
Vs.  
P. E. Ry Co. et al. Def.

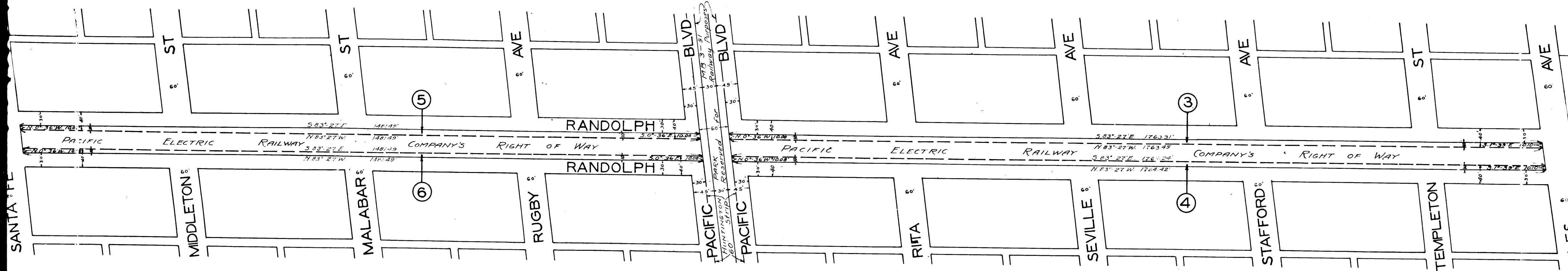
Pending July 1, 1926.  
Pending April 1, 1927  
Interlocutory decree rendered  
Jan. 13<sup>th</sup> 1928 - JUDGE Bk. 644-370  
Final judgment in favor of Pltff.  
as per map, rendered March 22, 1929.  
D: 77-237 Jd. Bk. 707-320  
Sh. 35.7



Note: - Lands proposed to be taken for the widening of  
North & South Randolph Streets are shown  
on this Plan colored thus:

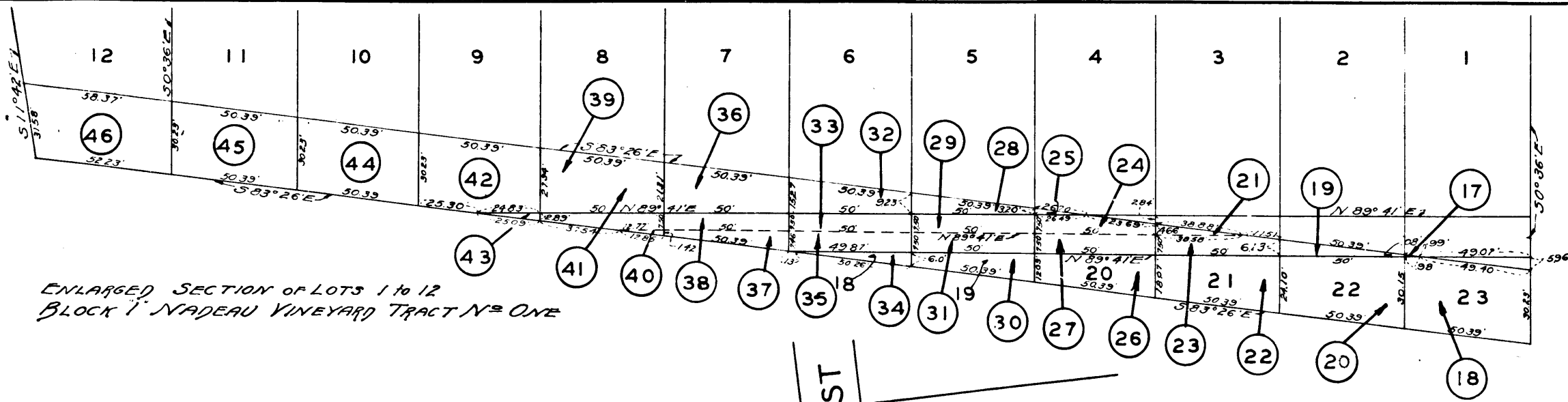
C.F. 1298 -

Sheet  
A-143  
A-395

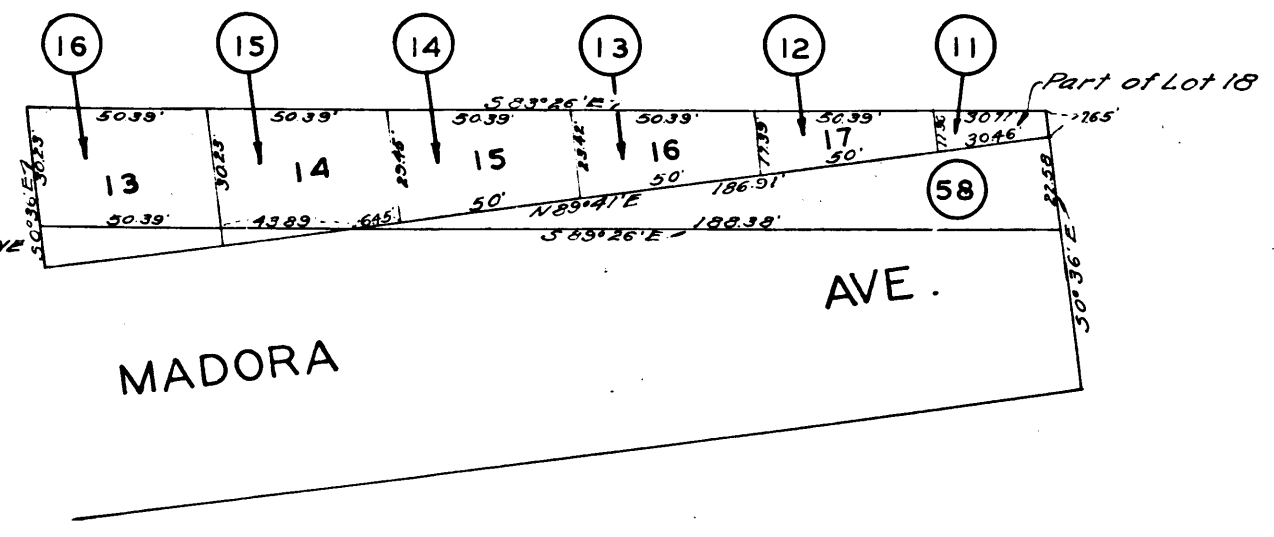
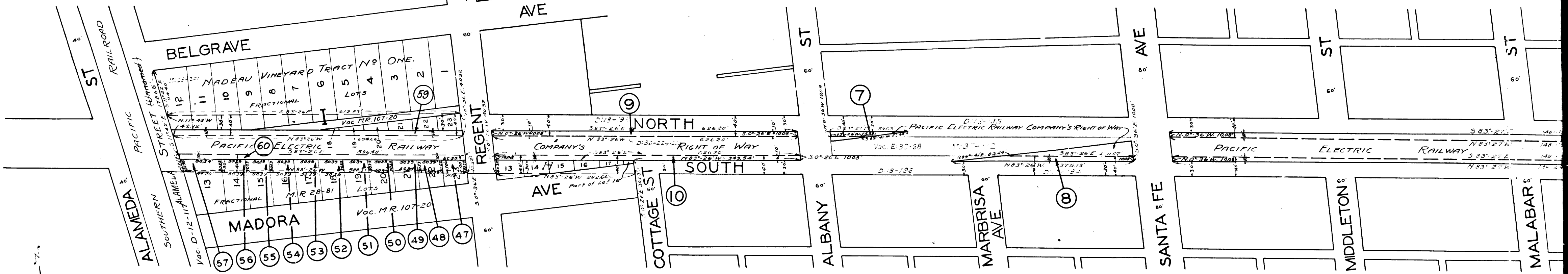


2

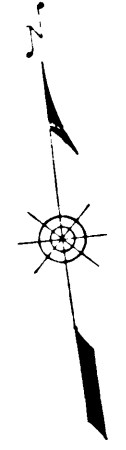
C.F. 1298 -



ENLARGED SECTION OF LOTS 1 TO 12  
BLOCK I, NADEAU VINEYARD TRACT NO. ONE



ENLARGED SECTION OF LOTS 13 TO 18  
BLOCK II, NADEAU VINEYARD TRACT NO. ONE



3

C.F. 1298 -