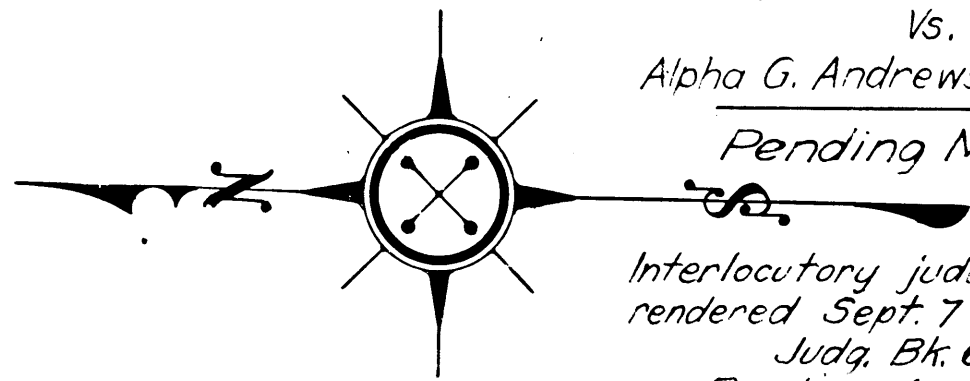


Superior Court Case No. 178048
 Suit for Condemnation
 Filed Sept. 3rd 1925
 County of Los Angeles, Pltff.
 Vs.
 Alpha G. Andrews, et al. Def.
 Pending Mar. 1, 1925



Interlocutory judgment as per map,
 rendered Sept. 7th 1925
 Judg. Bk. 611-305
 Pending Apr. 7th 1927
 Final judgement in favor of Pltff.
 as per map, rendered June 27th 1927
 D: 60-218, O.R. 6742-85

Portion of Figueroa Street relinquished to the
 County of Los Angeles by 197-177, O.R. R712-160

COUNTY
 STREET OPENING DISTRICT N^o 44
 MAP OF
 PROPOSED OPENING & WIDENING OF
FIGUEROA STREET

BETWEEN
VICTORIA ST. & P. E. RY. CO'S. R. OF W.
 (SAN PEDRO VIA GARDENA BRANCH)

SHOWING
 The exterior boundary of the District to be assessed therefor under
 the provisions of the County Street Opening Act of 1923, Approved May 11, 1923.
 SCALE 1"=200' FEBRUARY, 1925

Submitted, *Alfred J. Over* Chief Deputy
 Approved, *J. E. Rockhold* County Surveyor
 J. E. ROCKHOLD - COUNTY SURVEYOR

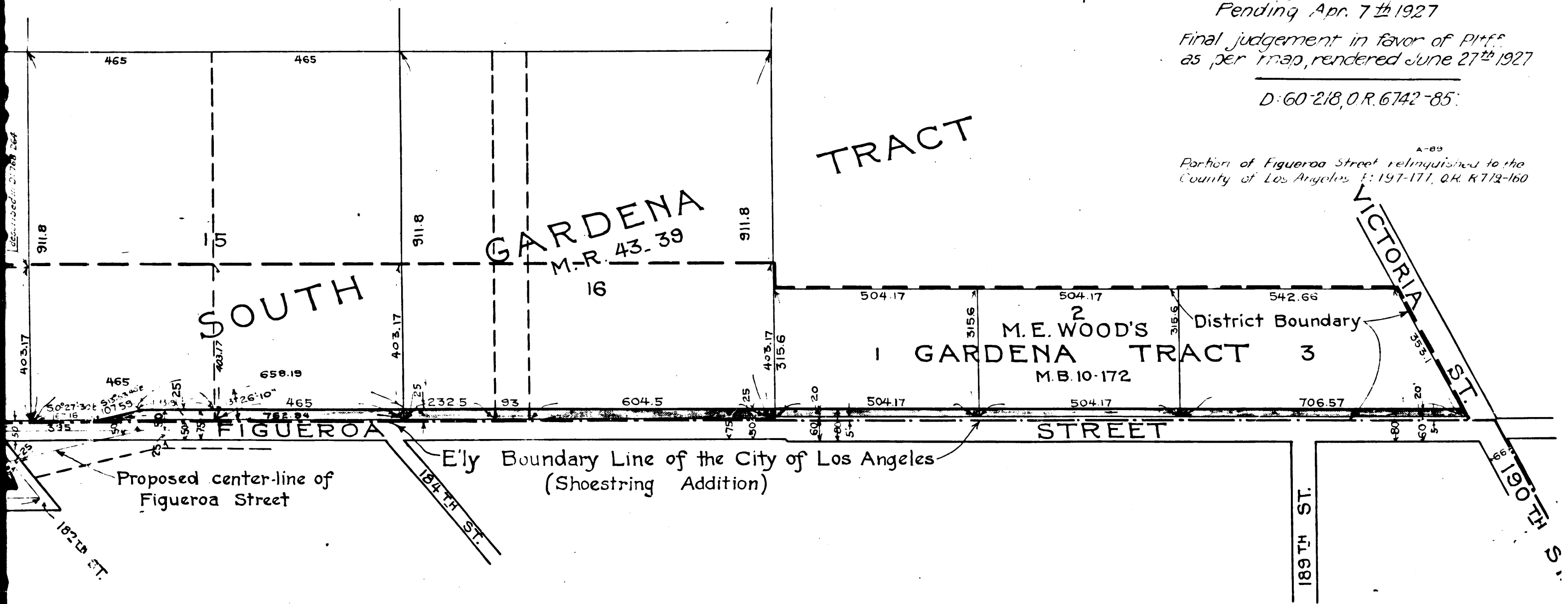
Approved as to form
 EDWARD T. BISHOP, COUNTY COUNSEL
 By *Edward W. Maloney*
 Chief Deputy

LEGEND
 District Boundary Line - - - - -
 Land sought to be condemned colored red

I hereby certify that the Board of Supervisors of
 Los Angeles County did, on the 1st day of June 1925, by resolution
 duly adopted, approve the accompanying map of the assessment
 district of County Street Opening District N^o 44 of the County
 of Los Angeles for the widening of Figueroa Street.

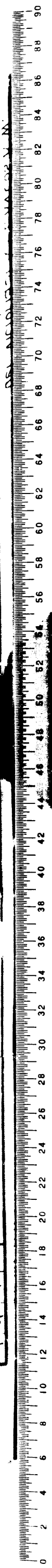
Filed June 1, 1925 in the
 office of the County Surveyor
 of Los Angeles County
 J. E. ROCKHOLD - COUNTY SURVEYOR
 by *M. J. Galt* Deputy

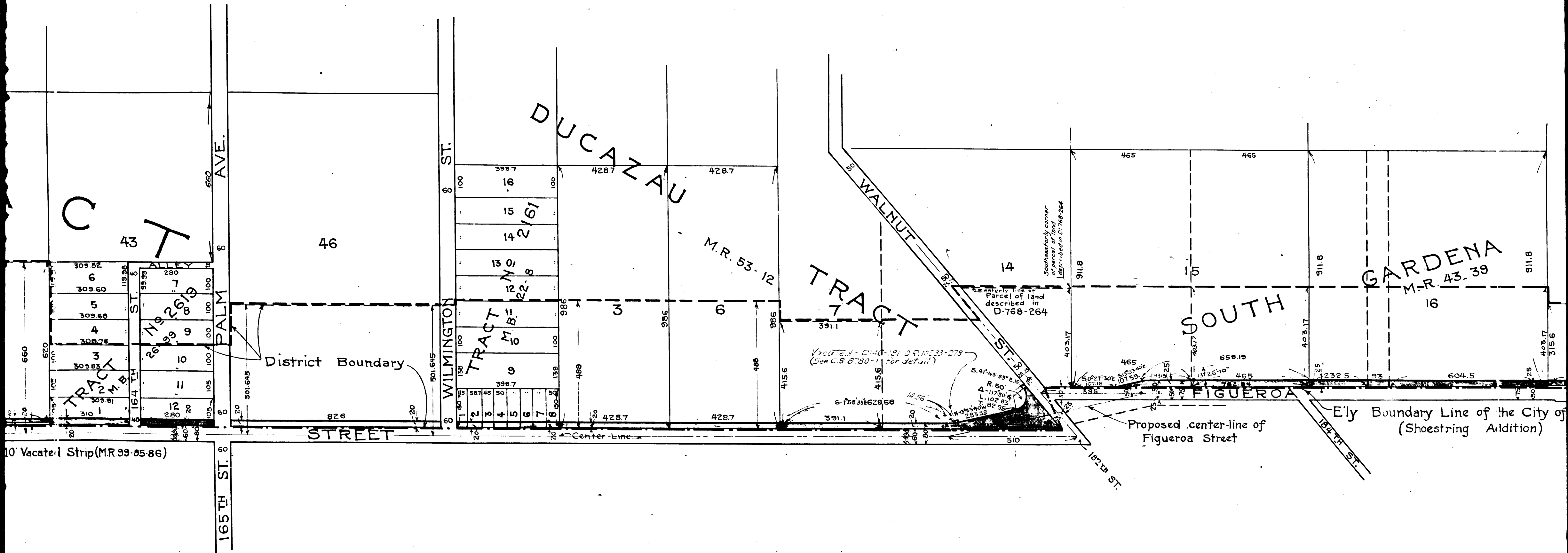
L. E. LAMPTON, County Clerk and
 Ex Officio Clerk of the Board of
 Supervisors of said County of Los Angeles
 by *Mame R. Beatty* Deputy



S.O.D. N ^o 44	
Drawn by E. Van Wert	Apr-25
Traced by E. Van Wert	Apr-25
Checked by R. B. Heuer	Apr-25

C.F. 1303 -





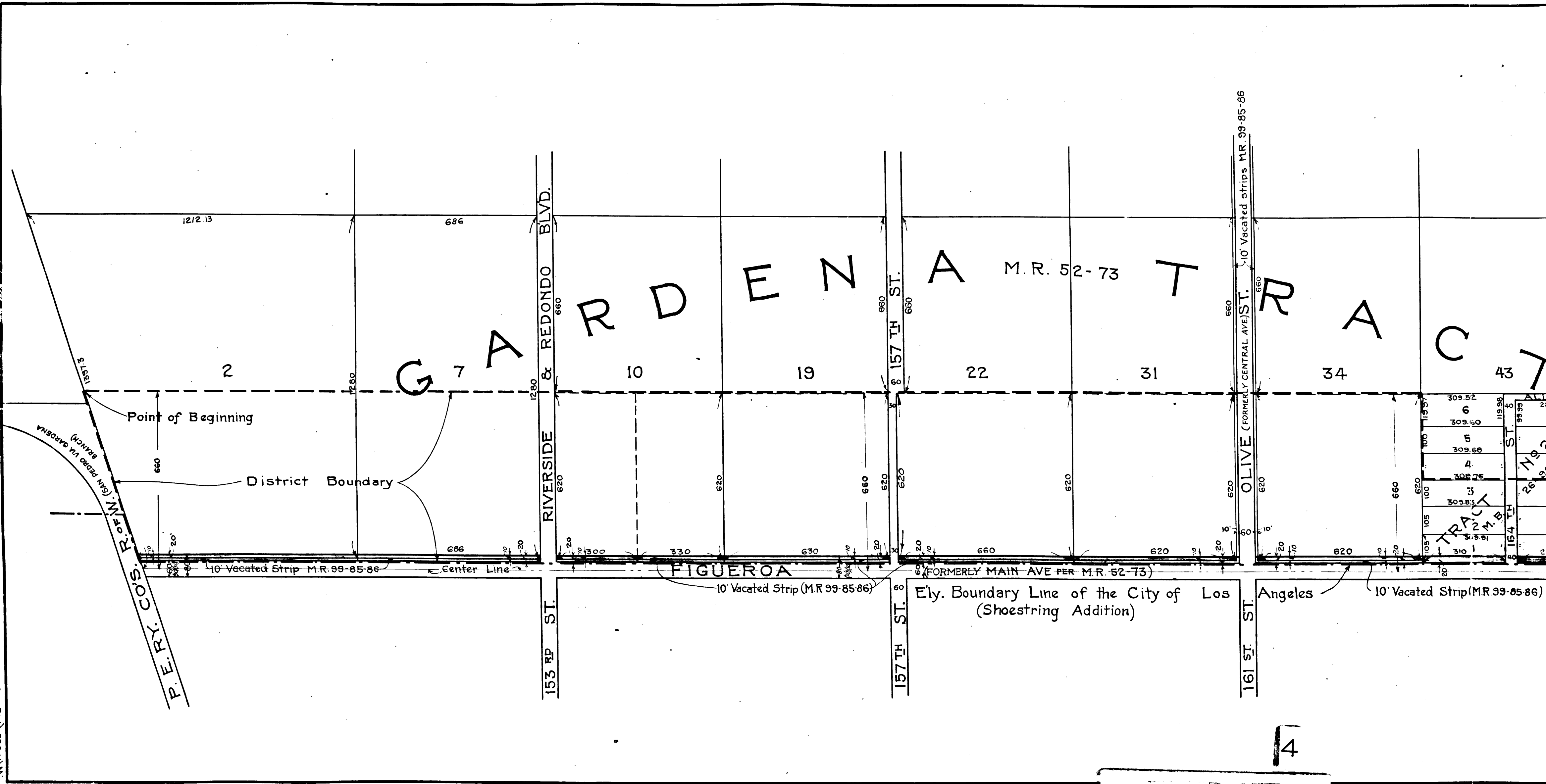
2

C.F. 1303 -

0
2
4
6
8
10
12
14
16
18
20
22
24
26
28
30
32
34
36
38
40
42
44
46
48
50
52
54
56
58
60
62
64
66
68
70
72
74
76
78
80
82
84
86
88
90

200 W 44

200 W 44
LIGNON DRIVE



C.F. 1303 -

4