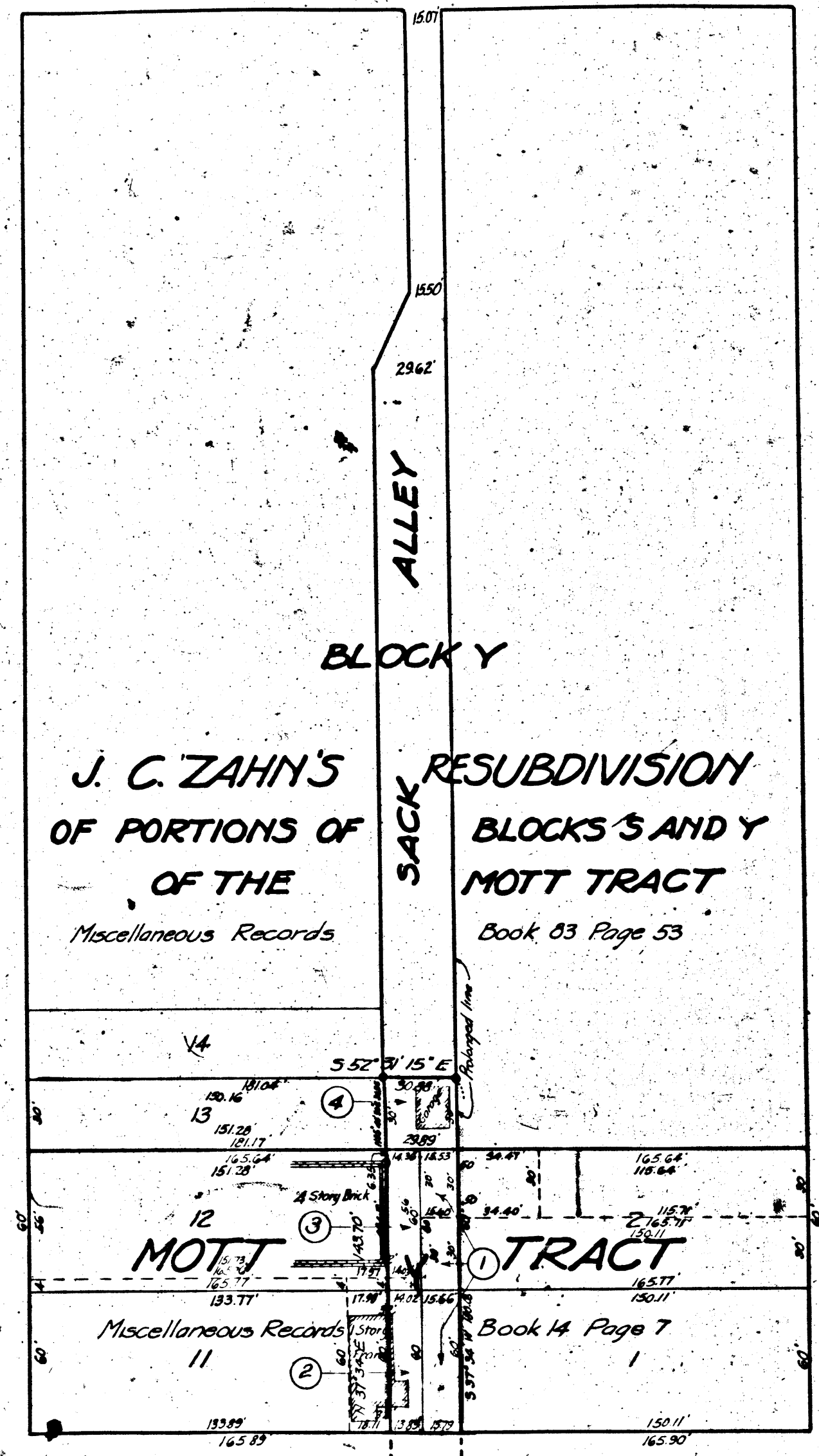


80' STREET

60' THIRD STREET 60'

80' FIGUEROA



J. C. ZAHN'S
OF PORTIONS OF
OF THE
Miscellaneous Records

SACK ALLEY
BLOCK Y
RESUBDIVISION
BLOCKS S AND Y
MOTT TRACT
Book 83 Page 53

MOTT TRACT
Miscellaneous Records
Book 14 Page 7

60' FOURTH STREET 60'

80' STREET

80' FLOWER

Superior Court Case No. 181867
Suit for Condemnation
Filed Oct. 26th 1925
City of Los Angeles, Plaintiff
Vs.
C. J. Fox Jr. et al. Defendants.
Pending May 1, 1926.
Interlocutory judgment as per
map, rendered Sept. 22nd 1926.
Judg. Bk. 611-369
Pending Apr. 7th 1927
Final judgment in favor of Plt'ff. as
per map, rendered September 1, 1927.

D: 61-145, O.R. 6791-178
Sht. 3

MAP
SHOWING THE LAND TO BE CONDEMNED
FOR THE OPENING AND EXTENDING OF
SACK ALLEY
BETWEEN
THIRD STREET
AND
FOURTH STREET
IN THE
CITY OF LOS ANGELES, CAL.

IN ACCORDANCE WITH ORDINANCES NOS. 52123 (NEW SERIES) AND 52728
JOHN C. SHAW, CITY ENGINEER AUGUST 1925
SCALE 1 INCH = 50 FEET

Note: Land to be condemned shown colored red.
Broken lines and figures show property holdings in cases
where they differ from recorded subdivisions.
The figures in circles indicate the parcel
numbers as set forth in Paragraph VIII of
the complaint.

RETURN TO CITY ENGINEER'S OFFICE
CITY OF LOS ANGELES
PROPERTY OF THE

V.3301

V.3301