

C.F. 1309 -

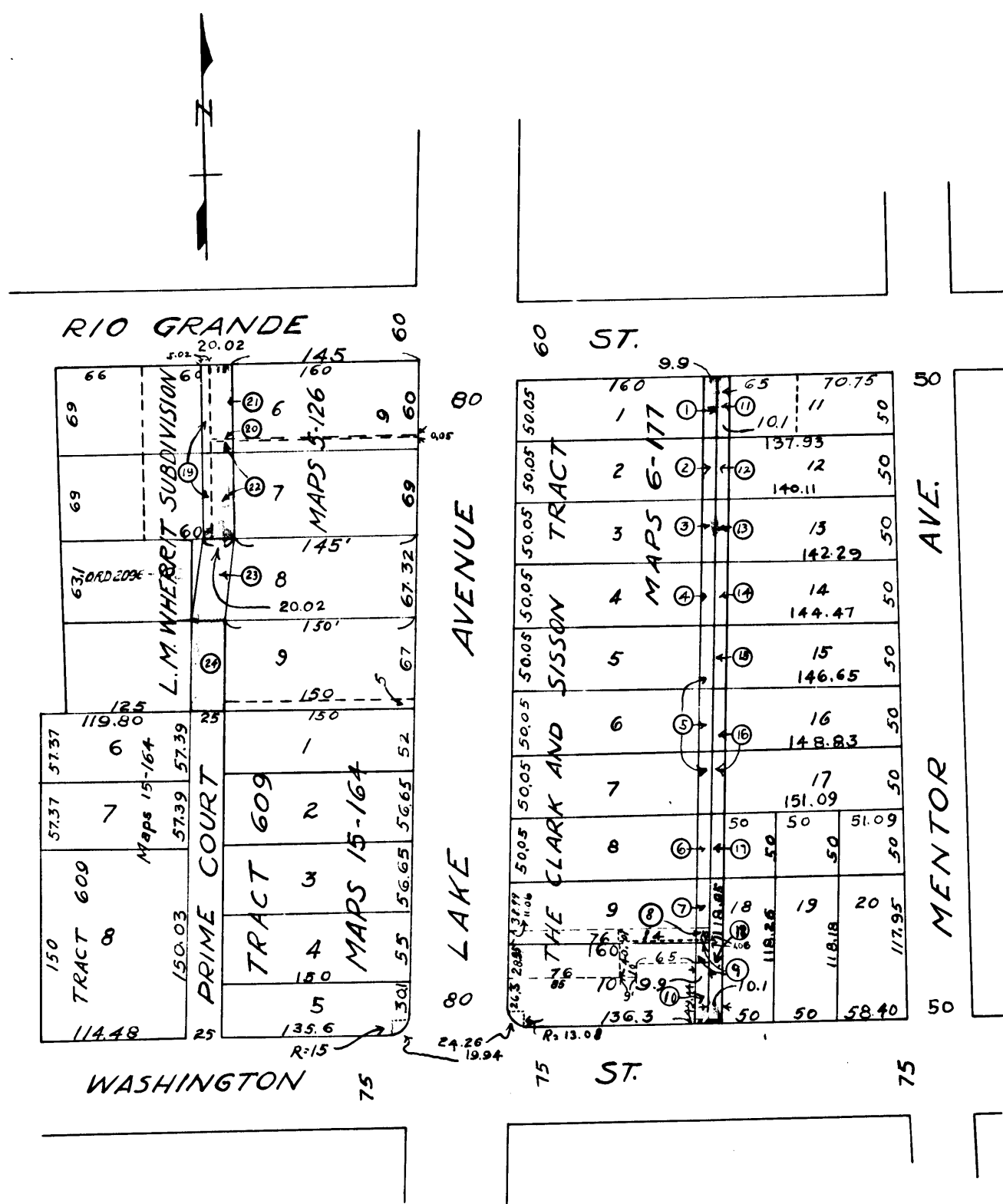


EXHIBIT "C"

NOTE - Shaded portions show land to be condemned

DRAWN BY A.H.B. CHECKED BY C.G.B. FIELD BOOKS <i>W. Allen</i> DEPUTY CITY ENGINEER APPROVED M.C. Clark CITY ENGINEER & SUPT. OF STREETS	CITY OF PASADENA OFFICE OF CITY ENGINEER & SUPERINTENDENT OF STREETS Opening and Extending of PRIME COURT . Also the opening of a 20 FT. ALLEY WASHINGTON ST. TO RIO GRANDE ST. (LAKE & MENTOR)	DATE OCT. 1925 SCALE 1 INCH = 100 FT. DRAWING NUMBER G-446
--	---	--

Superior Court Case No 182637
 Suit for Condemnation
 Filed Nov. 4th 1925
 City of Pasadena, Plaintiff
 Vs.
 John A. Stegman, et al. D-f.
 Pending May 1, 1926.
 Interlocutory judgment as per
 map, rendered June 2nd 1926
 Judg. Bk. 607-274
 Pending Apr. 8th 1927
 Final judgment in favor of Pltff.
 as per map, rendered Apr. 28, 1927.

D-59-134 U. R. 6640-214