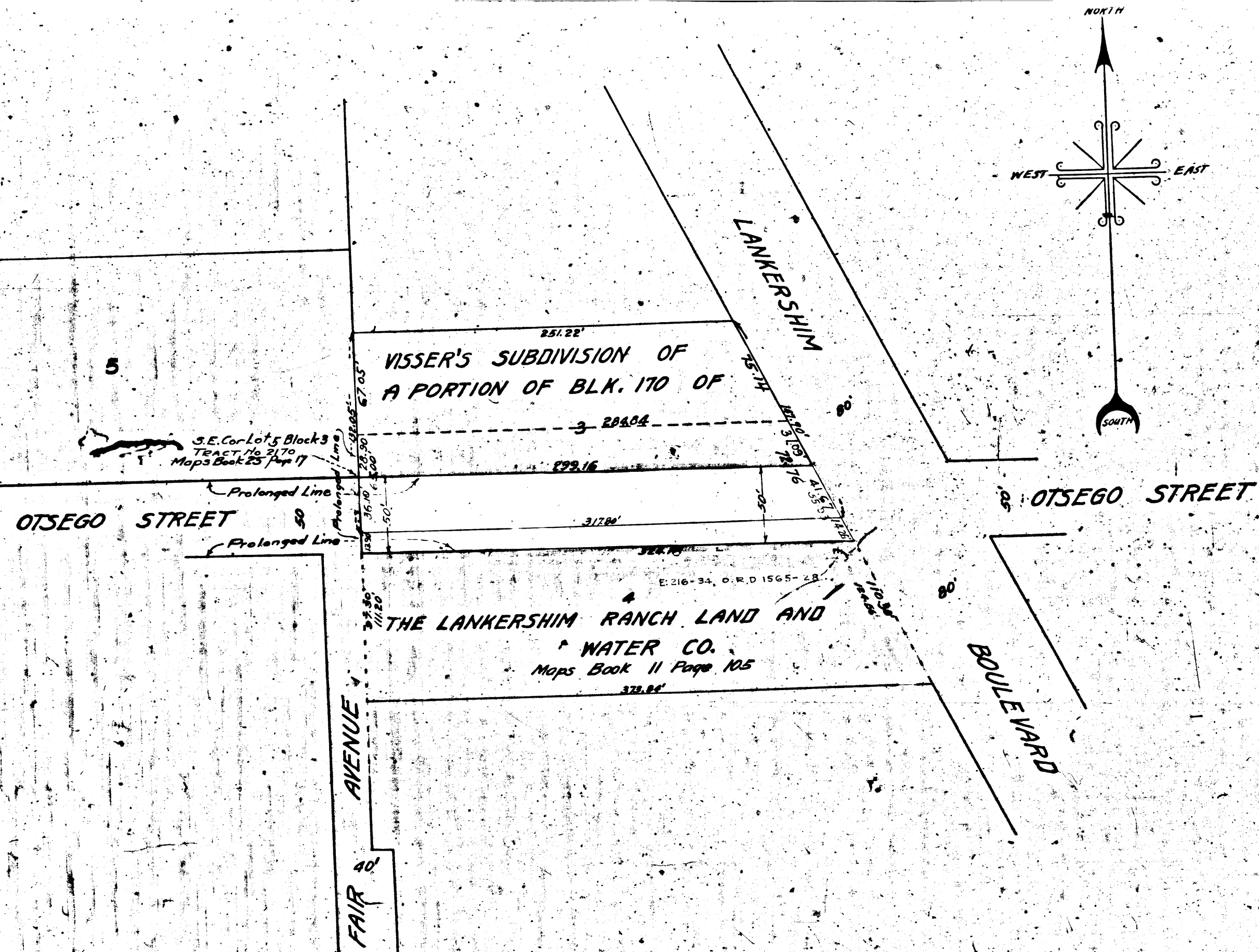


ST 33. A

ST 33. A



MAP
SHOWING THE LAND TO BE CONDEMNED
FOR THE
OPENING AND EXTENDING
OF
OTSEGO STREET
BETWEEN
LANKERSHIM BOULEVARD AND FAIR AVENUE
IN THE
CITY OF LOS ANGELES, CALIF.
IN ACCORDANCE WITH ORDINANCES NOS. 52361 AND 53031
SCALE IN FEET 0 10 20 30 40
JOHN C. SHAW, CITY ENGINEER OCTOBER 1925

NOTE: Land to be condemned shown colored red
Dotted lines and dimensions show property
holdings in those cases where they differ
from recorded subdivisions.

Superior Court Case No. 182656
Suit for Condemnation
Filed Nov. 4th 1925
City of Los Angeles, Plaintiff
Vs.
Morrison Land and Inv. Co. et al, Def.

1. Interlocutory judgment as per map,
rendered March 5th 1926
Judg. Bk. 602-123
Pending Apr. 8th 1927
Final judgment in favor of Plaintiff
Judg. Bk. 602-123, 1927
D. 61-239 O.R. 611-870

