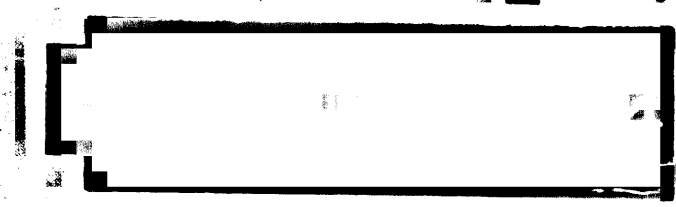
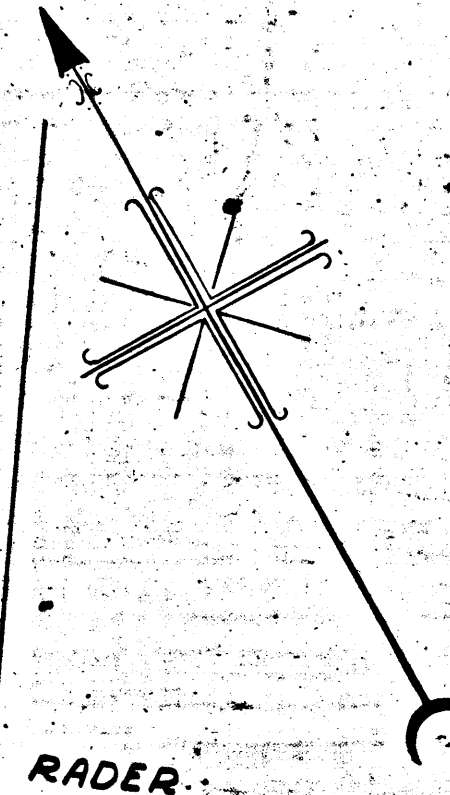
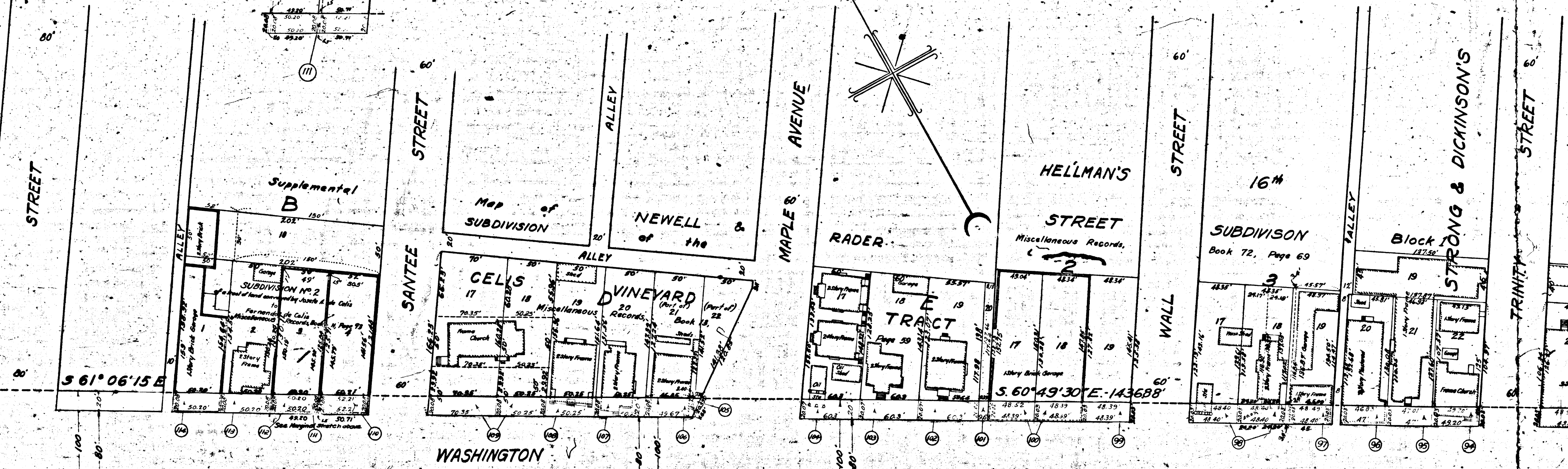
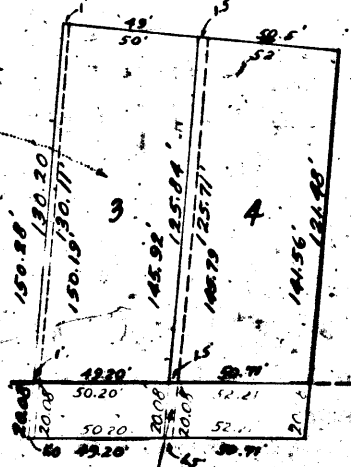


FOR CONTINUATION SEE SHEET NO. 2



MARGINAL SKETCH
Lots 3 and 4
SUBDIVISION NO. 2
of a tract of land conveyed by Josefa A. de Celis
to
Fernando de Celis
Miscellaneous Records, Book II, Page 33
No. 4040



LOS ANGELES STREET 80'
N. 61° 06' 15" W
SANTEE STREET 60'
MAPLE AVENUE 60'
WALL STREET 60'
TRINITY STREET 60'

Washington St. chg. to Washington Blvd. - Ord. 68401.

S 61° 06' 15" E
S 60° 49' 30" E - 1436.88'

