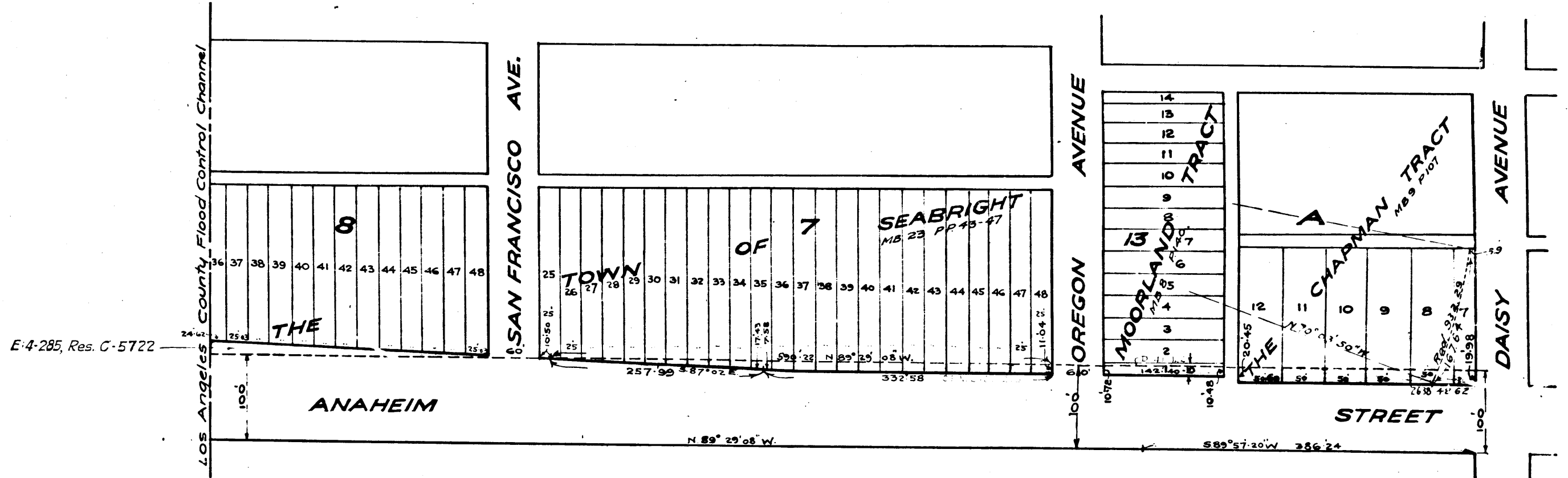


LOS ANGELES COUNTY FLOOD CONTROL CHANNEL



Superior Court Case No. 186294
 Suit for Condemnation
 Filed Dec. 24th 1925
 City of Long Beach, Plaintiff
 Vs.
 Fred J. Becker, et al., Def.
 Pending May 1, 1926.
 Pending Apr. 1, 1927
 Interlocutory decree as to Parcel 2
 rendered Sept. 24, 1927. J.B. 650-217
 Interlocutory decree as to remaining
 Parcels, rendered Dec. 7, 1927. J.B. 676-1
 Final Judgment in favor of Pltff as
 per map, rendered Jan. 30, 1929.
 D 72-5 O.R. 7432-179

C.F. 1332 -

4

AVENUE

3

1	2	3	4	5	6	7	8	9	10	11	12	13	14	15	16	17	18	19	20	21	22	23	24	25	26	27	28	29	30
1	2	3	4	5	6	7	8	9	10	11	12	13	14	15	16	17	18	19	20	21	22	23	24	25	26	27	28	29	30

COTA

1932

1938

1941

1944

1947

1950

1953

1956

1959

1962

1965

1968

1971

1974

1977

1980

1983

1986

1989

1992

1995

1998

2001

2004

2007

2010

2013

2016

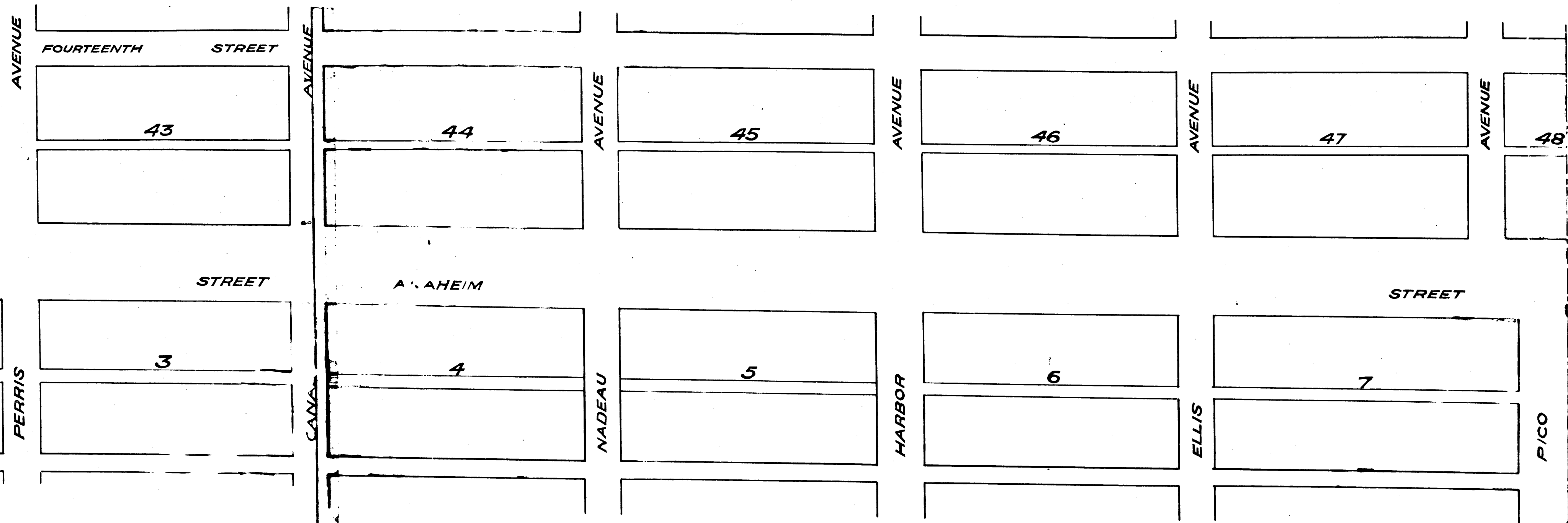
2019

2022

JACKSON AVE.

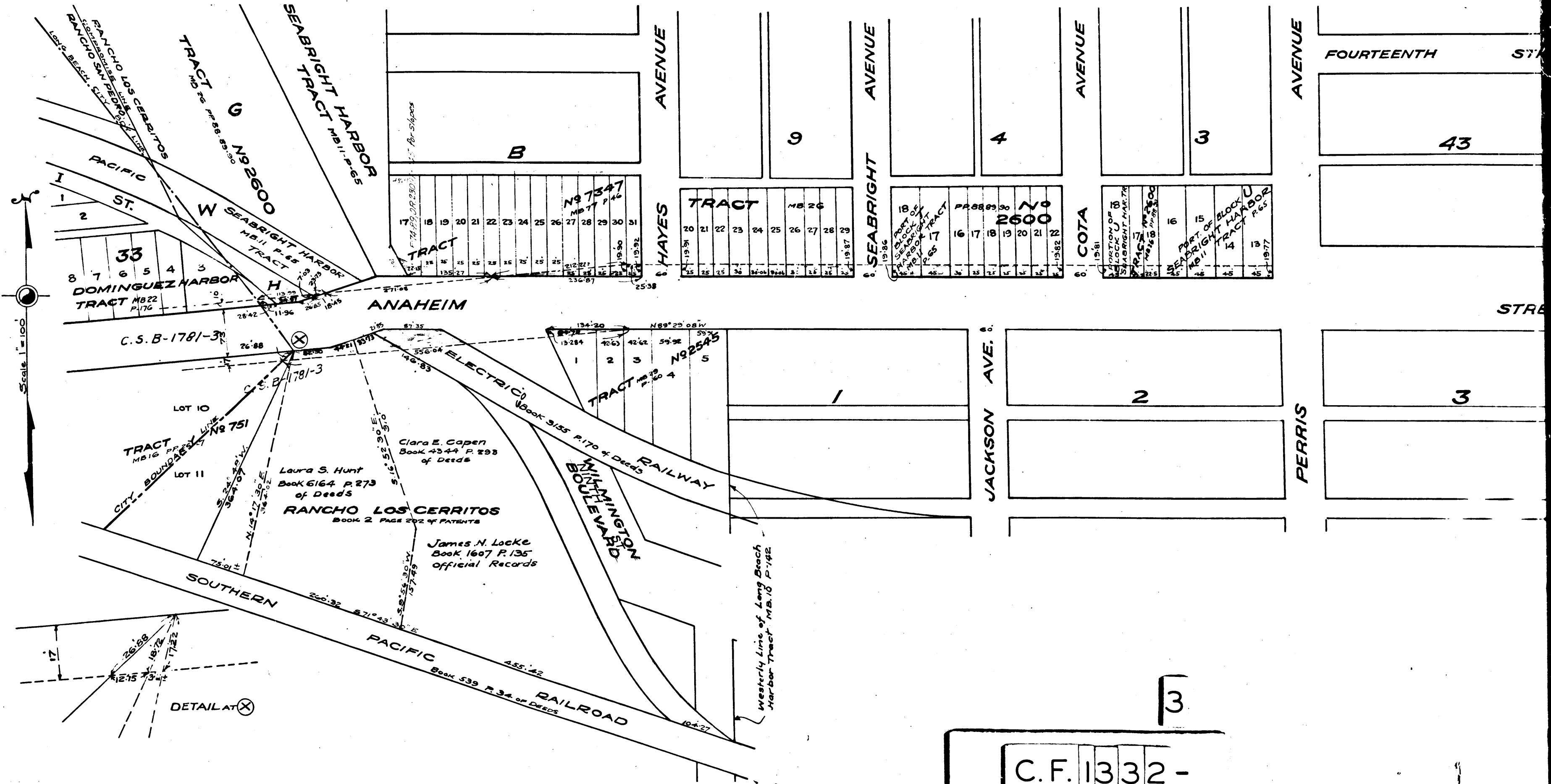
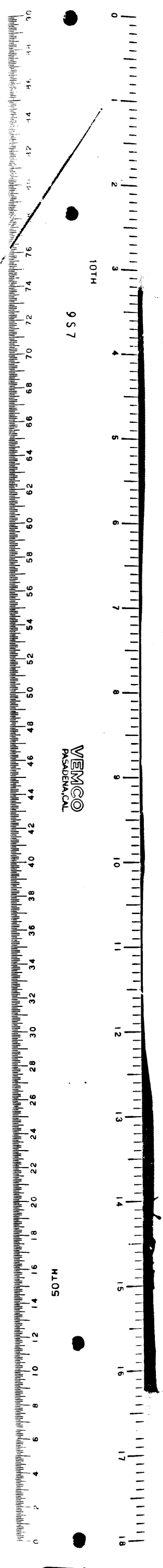
2

PERRIS



2

C.F. 1332-



3

C.F. 1332-