

COUNTY
STREET OPENING DISTRICT NO 68
MAP OF
PROPOSED WIDENING
OF
LA BREA AVENUE

BETWEEN
SANTA MONICA BLVD. & ROMAINE ST.

SHOWING:-
The exterior boundary of the District to be assessed therefor under
the provisions of the County Street Opening Act of 1923, Approved May 11, 1923
Scale 1"=100' Oct. 1925

J.E. ROCKHOLD, County Surveyor
Submitted, *Alfred Jones* Approved, *J.E. Rockhold*
Chief Deputy County Surveyor

Approved as to form
EDWARD T. BISHOP, County Counsel
By *Frederick M. ...*
Assistant

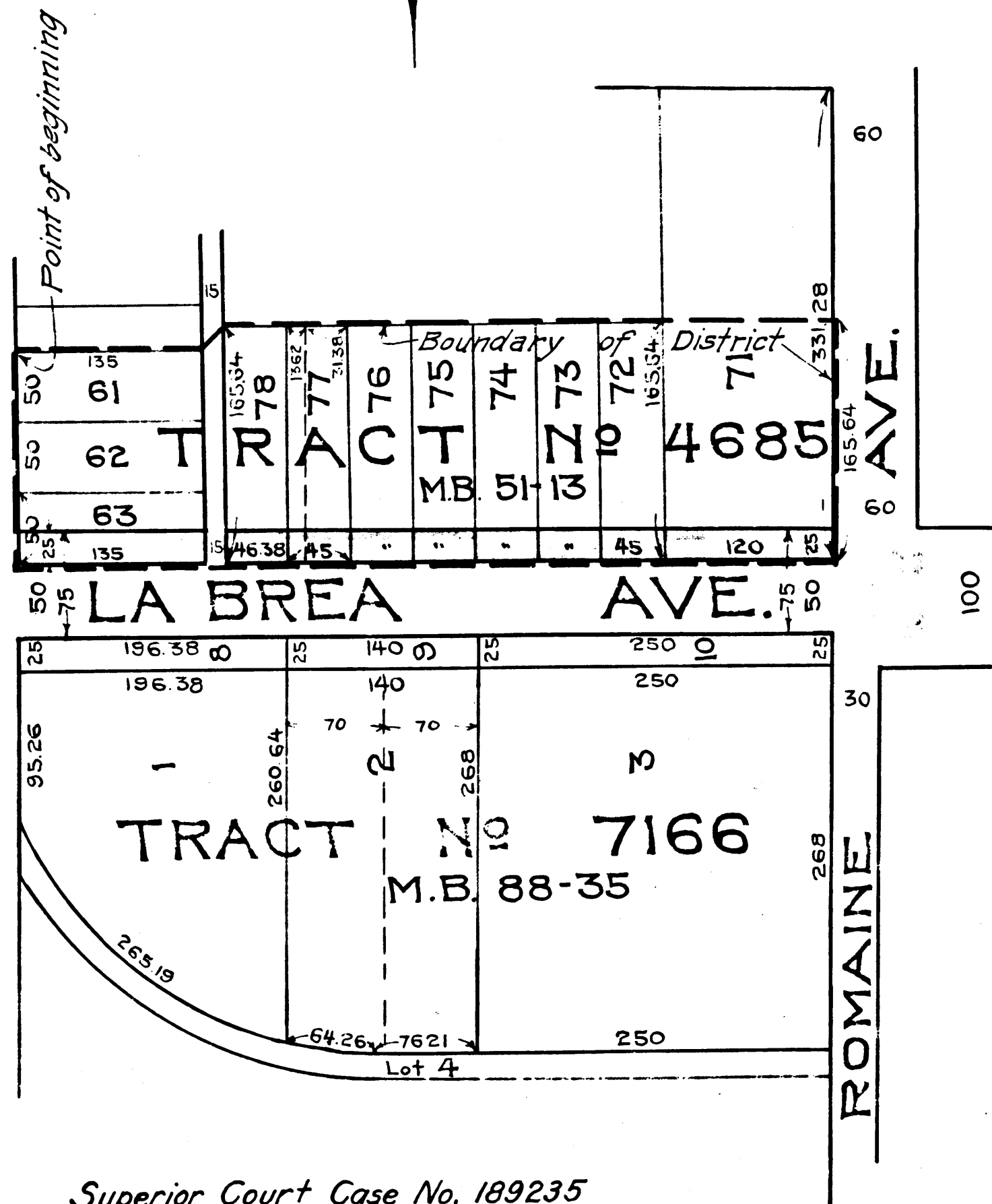
LEGEND:-
District Boundary Line ————
Land sought to be condemned colored red.

I hereby certify that the Board of Supervisors of Los Angeles
County did, on the 5th day of Oct. 1925 by resolution duly
adopted, approve the accompanying map of the assessment
district of County Street Opening District No. 62 of the County
of Los Angeles for the widening of La Brea Ave.

Filed Oct. 5th 1925 in the office of
the County Surveyor of Los Angeles Co.
J.E. ROCKHOLD, County Surveyor
by *R.B. Heuser*
Deputy

L.E. LAMPTON
County Clerk and Ex-Officio Clerk
of the Board of Supervisors of
said County of Los Angeles.
by *Marnie Beatty*
Deputy

SANTA MONICA BLVD.



Superior Court Case No. 189235
Suit for Condemnation
Filed Feb. 3rd 1926
County of Los Angeles, Plaintiff
Vs.
Lou Anger et al., Defendants.
Pending May 1, 1926.
Case Dismissed March 28th 1927.

C.F. 1337 -

S.O.D. No 68	
Drawn by E. Van Wert	Aug. '25
Traced by E. Van Wert	Aug. '25
Checked by R.B. Heuser	Oct. '25

MEMCO
PASADENA, CAL.

MEMCO
PASADENA, CAL.

200 Nos 8