

A-351

# COUNTY STREET OPENING DISTRICT No 31 MAP OF PROPOSED OPENING OF ARKANSAS AVENUE

## BETWEEN ARDMORE AVE. & CLARK AVE.

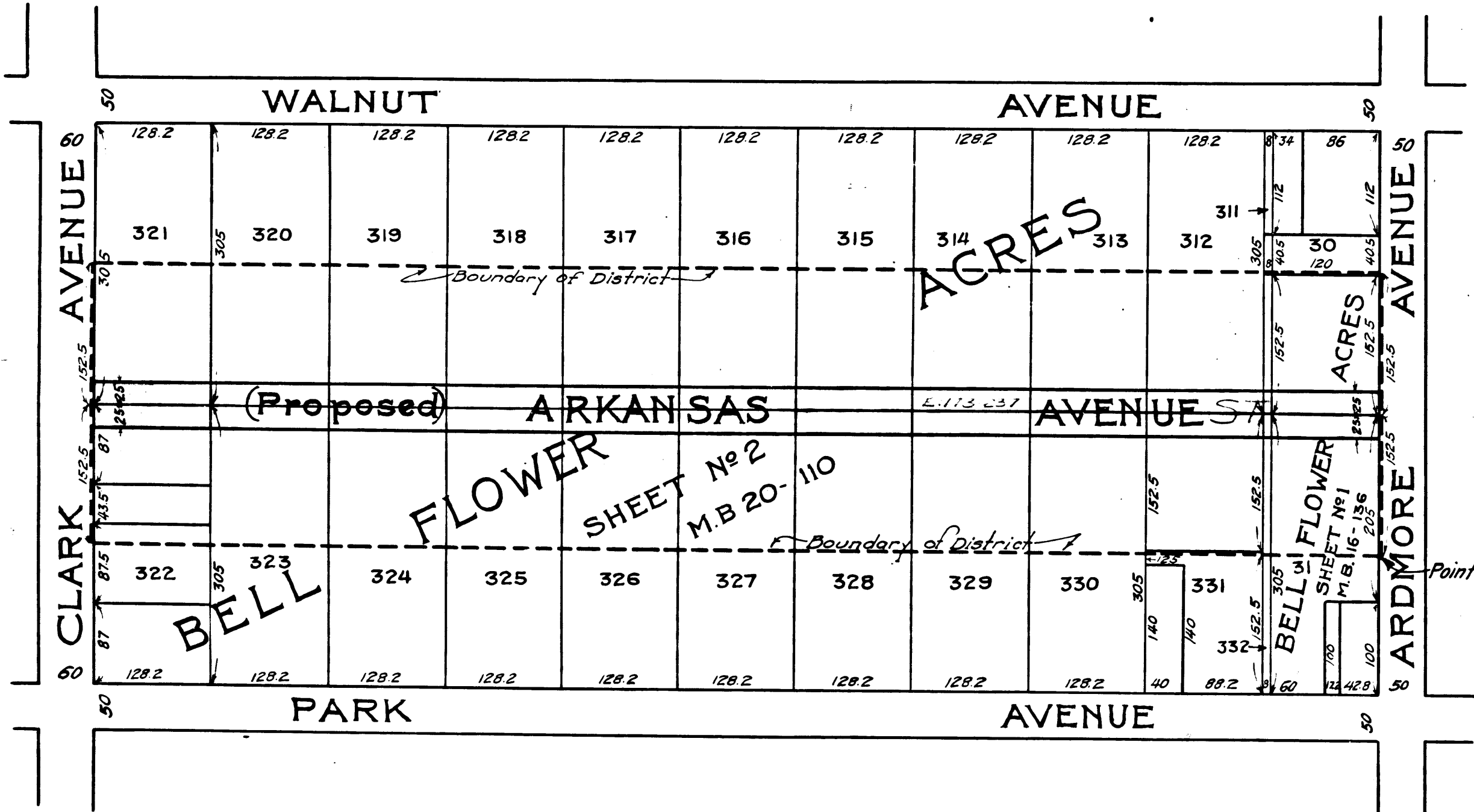
SHOWING:  
The exterior boundary of the District to be assessed therefor under  
the provisions of the County Street Opening Act of 1923, Approved May 11, 1923  
SCALE 1" = 100' JAN. 1925

Submitted J.E. Rockhold - COUNTY SURVEYOR  
Approved Alfred Jones Chief Deputy  
J.E. Rockhold County Surveyor  
Approved as to form  
Edward T. Bishop - County Counsel  
by Conatus Chief Deputy

LEGEND:  
District Boundary Line - - - - -  
Land sought to be condemned colored red

I hereby certify that the Board of Supervisors of Los Angeles  
County did, on the 17th day of Jan, 1925, by resolution, duly  
adopted, approve the accompanying map of the assessment district  
of County Street Opening District No. 31 of the County of Los Angeles  
for the opening of Arkansas Avenue.

Filed Jan. 19, 1925 in the  
office of the County Surveyor  
of Los Angeles County.  
J.E. ROCKHOLD - COUNTY SURVEYOR  
by M. J. Kelly Deputy  
L.E. LAMPTON  
COUNTY CLERK AND EX-OFFICIO CLERK OF THE  
BOARD OF SUPERVISORS OF SAID COUNTY OF LOS ANGELES  
by Mame P. Beatty  
She 33  
Deputy



Superior Court Case No. 169734  
Suit for Condemnation  
Filed May 13th 1925  
County of Los Angeles, Pltff.  
Vs.  
George Byron et al., Defendants.

Pending May 1, 1926.  
Interlocutory judgment rendered  
July 30th 1926 - Judg. Bk. 608-385  
Pending Apr. 6th 1927  
Final judgement in favor of Pltff. as  
per map rendered May 18th 1927  
D-60-157, O.R. 6630-256  
Judg. Bk. 637-88

C.F. 1338 -

O. & W. No 31	
Drawn by E. Van Wert	Jan. 1925
Traced by E. Van Wert	Jan. 1925
Checked by R. F. Flicker	Jan. 1925

MEMCO  
PACIFIC  
CALIFORNIA

MEMCO  
PACIFIC  
CALIFORNIA

10TH  
9 57

10TH  
9 57