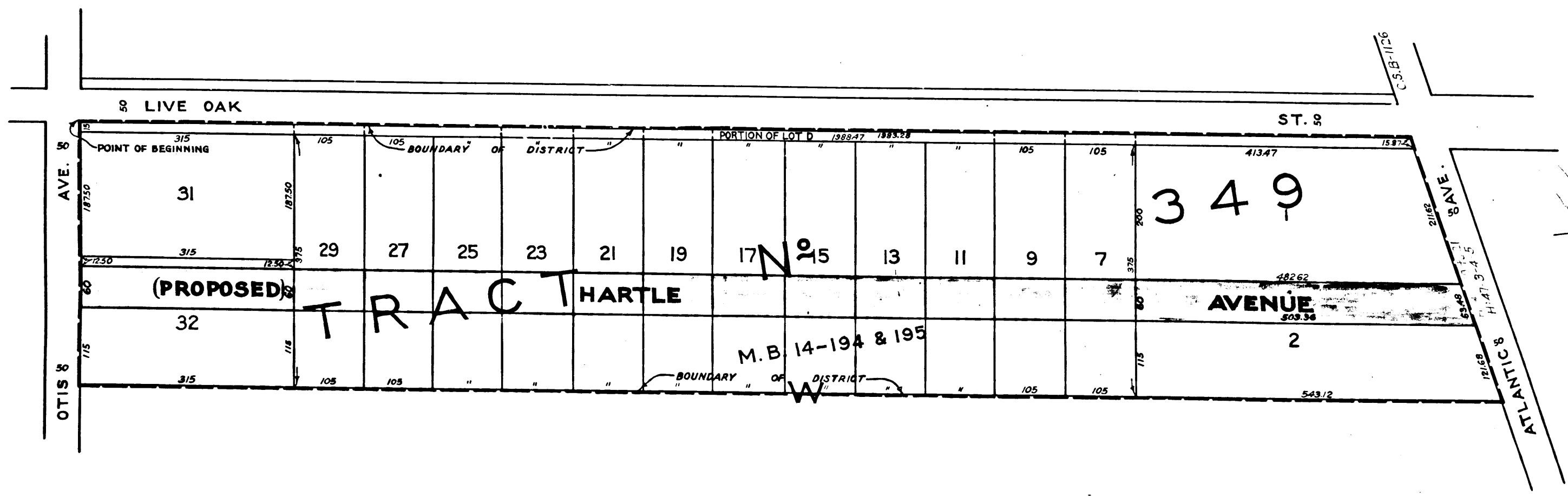


A-533



COUNTY
STREET OPENING DISTRICT NO 69
MAP OF
PROPOSED OPENING
OF
HARTLE AVENUE
BETWEEN OTIS AVENUE AND ATLANTIC AVENUE
SHOWING

The exterior boundary of the district to be assessed therefor under the provisions of the County Street Opening Act of 1923, Approved May 11, 1923. Scale 1"=100' Nov. 1925.
J.E. ROCKHOLD, COUNTY SURVEYOR

Submitted: *Alfred Jones* Chief Deputy Approved: *J.E. Rockhold* County Surveyor

Approved as to form
EDWARD T. BISHOP, COUNTY COUNSEL
By *Edward T. Bishop* Chief Deputy

LEGEND:-
District Boundary Line - - - - -
Land sought to be condemned colored red

I hereby certify that the Board of Supervisors of Los Angeles County did, on the 16th day of Dec. 1925, by resolution duly adopted, approve the accompanying map of the assessment district of County Street Opening District No 69 of the County of Los Angeles for the opening of HARTLE AVENUE.

Filed Nov. 15, 1925, in the office of the County Surveyor of Los Angeles County.
J.E. ROCKHOLD, COUNTY SURVEYOR
by *R. B. Heuer* Deputy

L.E. LAMPTON, County Clerk and Ex-Officio Clerk of the Board of Supervisors of said County of Los Angeles.
by *L.E. Lampton* Deputy

Superior Court Case No. 189206
Suit for Condemnation
Filed Feb. 2, 1926
County of Los Angeles, Plff.
vs.
Walter Aspden et al., Defendants.
Pending May 1, 1926.
Interlocutory judgment as per map, rendered Feb. 24th 1927.
Judg. Bk. 634-341
Pending Apr. 7th 1927
Final judgment in favor of Plff. as per map rendered March 22, 1928.
D-64-248, S.R. 7114-12
Sht 46-7

C.F. 1341 -

S.O.D. No 69	
Drawn by R.B. Heuer	Oct. '25
Traced by R.B. Heuer	Oct. '25
Checked by R.F. Flicker	Nov. '25

WESTCO

957