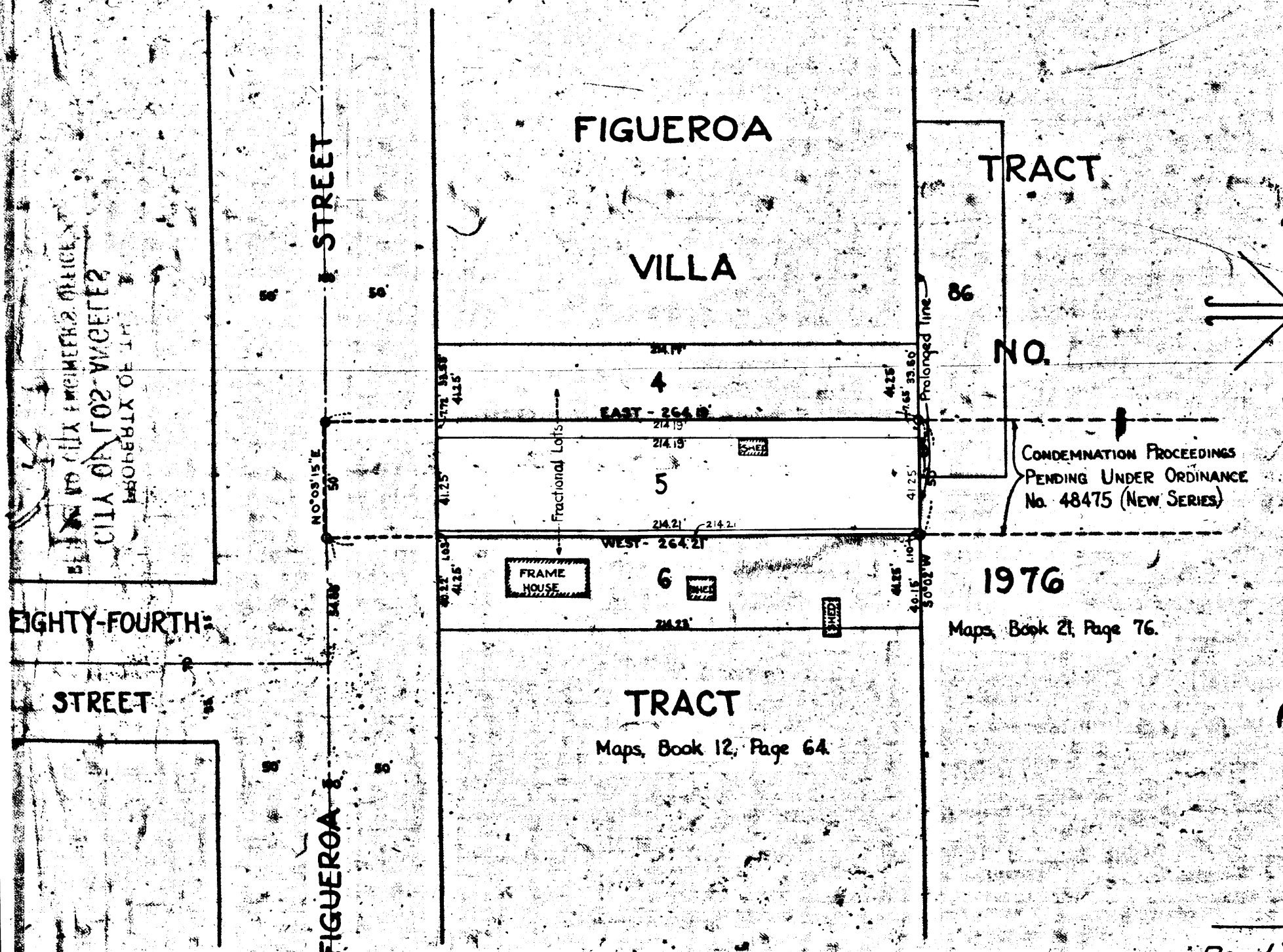


A.3223

A.3223

A.3223.A

A.3223



MAP
 SHOWING THE LAND TO BE CONDEMNED
 FOR THE OPENING OF
 A NEW STREET TO BE KNOWN AS
EIGHTY-FOURTH PLACE

BETWEEN
 THE WESTERLY TERMINUS OF THAT CERTAIN
 PRIVATE STREET KNOWN AS EIGHTY-FOURTH PLACE
 264.21 E. of Figueroa Street
 AND
FIGUEROA STREET
 IN THE
CITY OF LOS ANGELES, CAL.

IN ACCORDANCE WITH ORDINANCES NOS. 53,020 AND 53,835.
JOHN C. SHAW - CITY ENGINEER. FEBRUARY, 1926.
 SCALE - 1 INCH = 50 FEET.

NOTE: Land to be condemned shown colored red.

Pending Apr. 7th 1927
 Final judgment in favor of Pl'ff., as
 per map, rendered Feb. 2nd., 1927.
 D: 65-65, O.R. 7764-297
 Sht. 67

Superior Court Case No. 192432
Suit for Condemnation
Filed March 23, 1926
City of Los Angeles, Plaintiff
vs.
Levi E. Kindig et al, Def.
Term. May 1, 1926
Interlocutory judgment as per
map, rendered Sept. 30th 1926
Jud. Bk. 628-160

