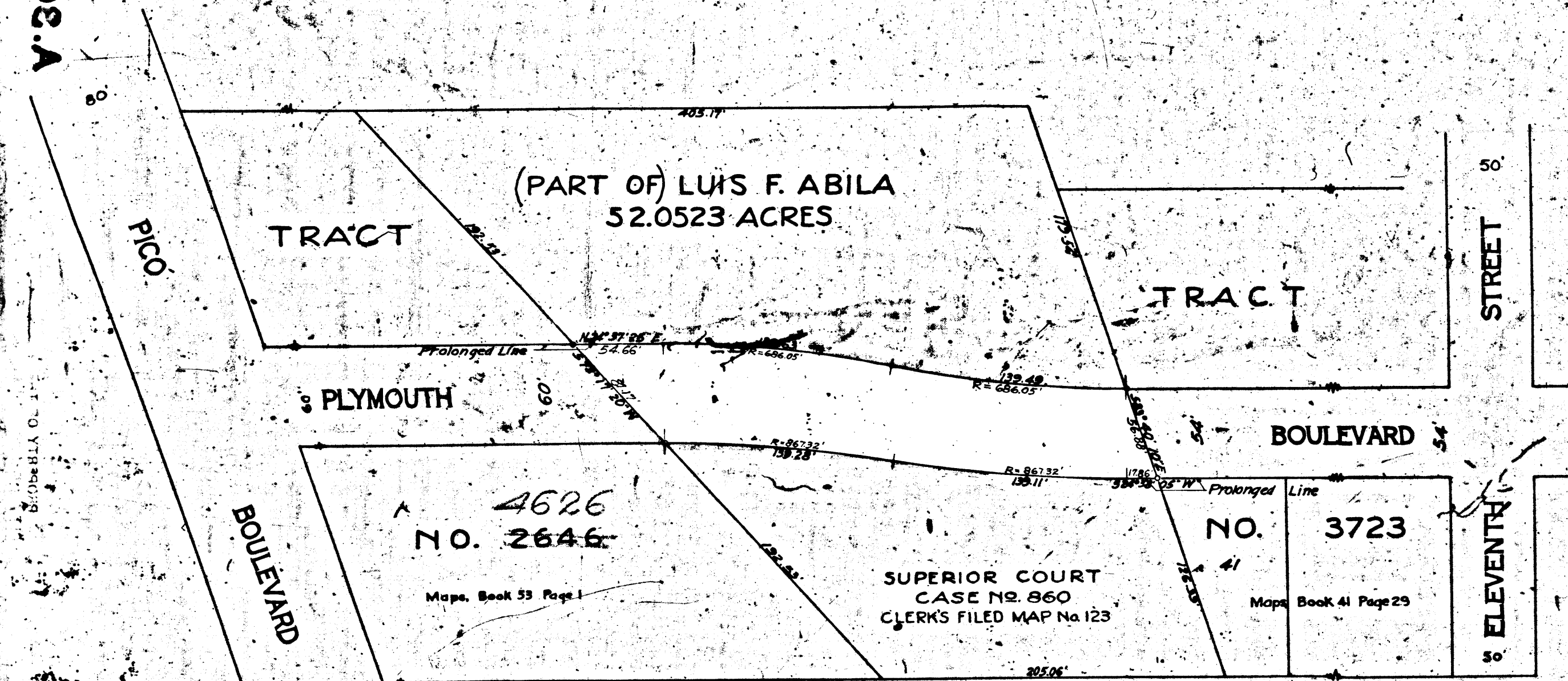


V.3620

A.3620

V.3620

A.3620



**MAP**  
 SHOWING LAND TO BE CONDEMNED FOR THE  
 OPENING AND EXTENDING  
 OF  
**PLYMOUTH BOULEVARD**

BETWEEN  
 ELEVENTH STREET  
 AND  
 PICO BOULEVARD  
 IN THE  
 CITY OF LOS ANGELES, CALIF.  
 IN ACCORDANCE WITH ORDINANCES NOS. 52989 AND 53834  
 JOHN C. SHAW, CITY ENGINEER      FEBRUARY, 1926  
 SCALE: 1 INCH = 50 FEET

Note: Land to be condemned shown colored red.

*Superior Court Case No. 192541  
 Suit for Condemnation  
 Filed March 24, 1926  
 City of Los Angeles, Plaintiff  
 vs.  
 P.E. Land Co., Defendants.  
 Pending May 1, 1926.  
 Interlocutory judgment as per  
 map, rendered Dec. 30<sup>th</sup> 1926  
 Judg. Bk. 830-879  
 Pending Apr. 1<sup>st</sup> 1927  
 Final judgment in favor of Plff., as  
 per map, rendered Dec. 12<sup>th</sup> 1927.*

D: 65-43, O.R. 7780-226  
 Sht 5  
**A. 3650**

