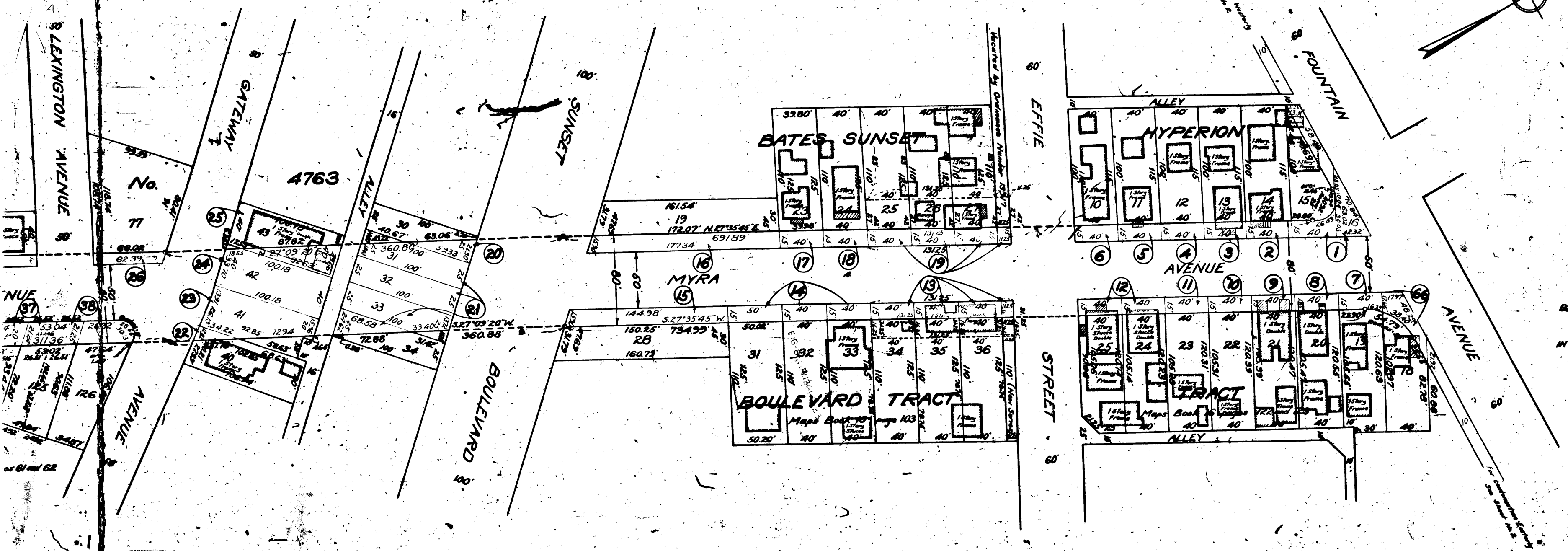


Superior Court Case No. 192600  
 Suit for Condemnation  
 Filed March 25, 1926  
 City of Los Angeles, Plaintiff  
 vs.  
 Donald Frazier et al., Defs.

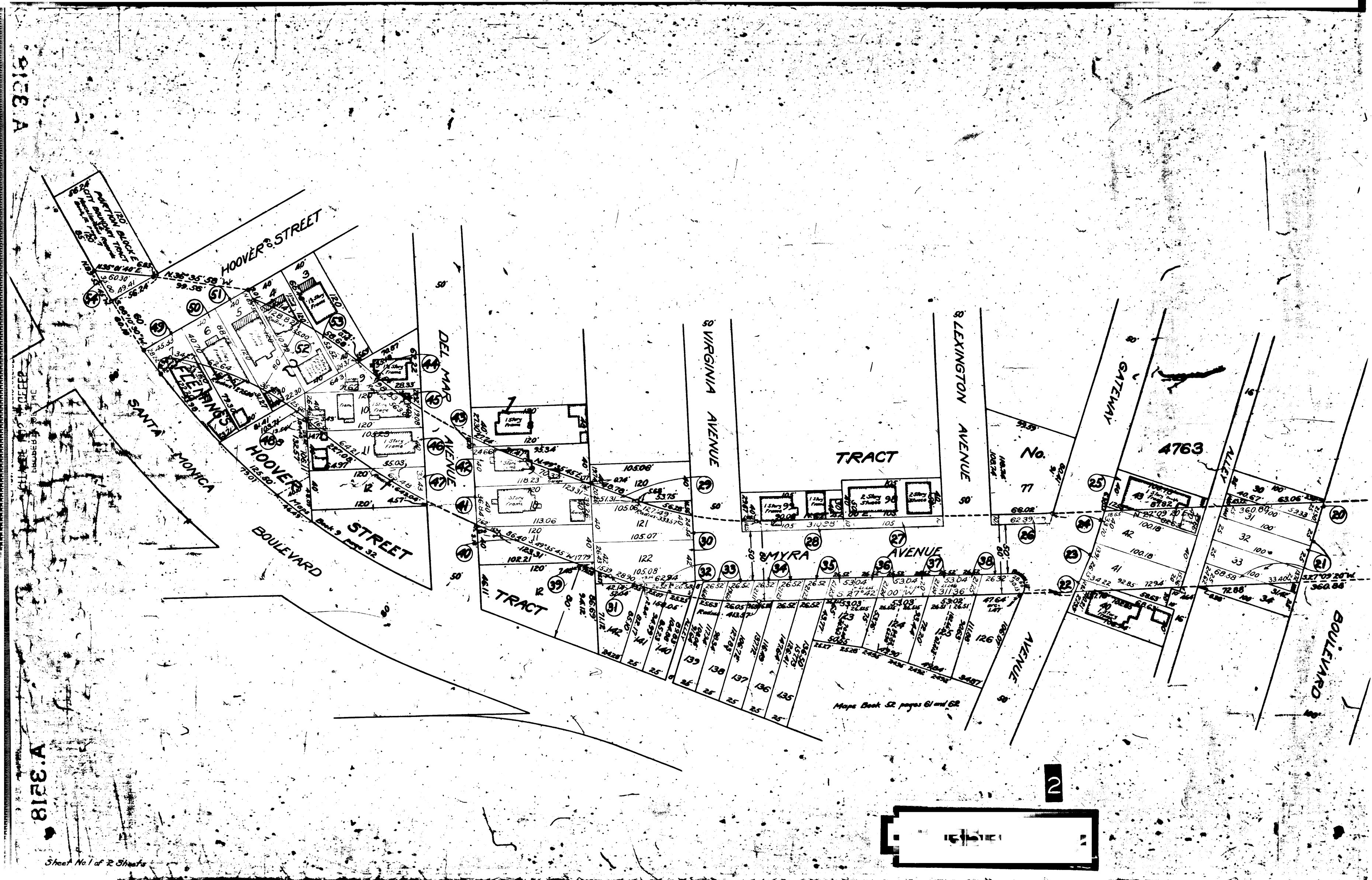
Pending April, 1927  
 Interlocutory decree rendered July 8, 1927  
 Judg. Bk. 645-116.  
 Final judgment in favor of Plt'ff.  
 as per map, rendered July 18, 1928.  
 D:70-99, O.R. 7260-286

(SHEET NUMBER 11)  
**MAP**  
 (CONSISTING OF 2 SHEETS)  
 SHOWING THE LAND TO BE CONDEMNED  
 FOR THE  
**OPENING, WIDENING, AND EXTENDING OF  
 MYRA AVENUE**  
 BETWEEN FOUNTAIN AVENUE AND SANTA MONICA BOULEVARD  
 AT HOOVER STREET, ALSO THE WIDENING OF  
**FOUNTAIN AVENUE**  
 BETWEEN HYPERION AVENUE AND SUNSET BOULEVARD,  
 IN THE CITY OF LOS ANGELES, CALIF.  
 IN ACCORDANCE WITH ORDINANCES Nos. 32031 AND 32252  
 SCALE IN FEET **1" = 100'**  
**JOHN C. SHAW, CITY ENGINEER**  
 DECEMBER 1925

NOTE:  
 Land to be condemned shown shaded red  
 Dotted lines and dimensions show property holdings as shown maps  
 where they differ from recorded subdivisions.  
 Figures in circles indicate the parcel numbers as set  
 forth in Paragraph VIII of the complaint.  
 Sht. 2-5



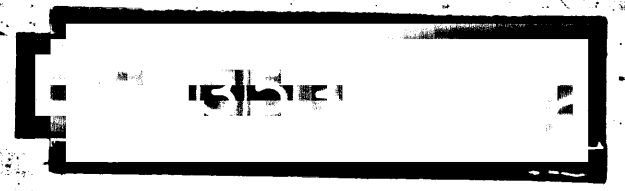
116



8128.A

8128.A

Sheet No 1 of 2 Sheets



2