

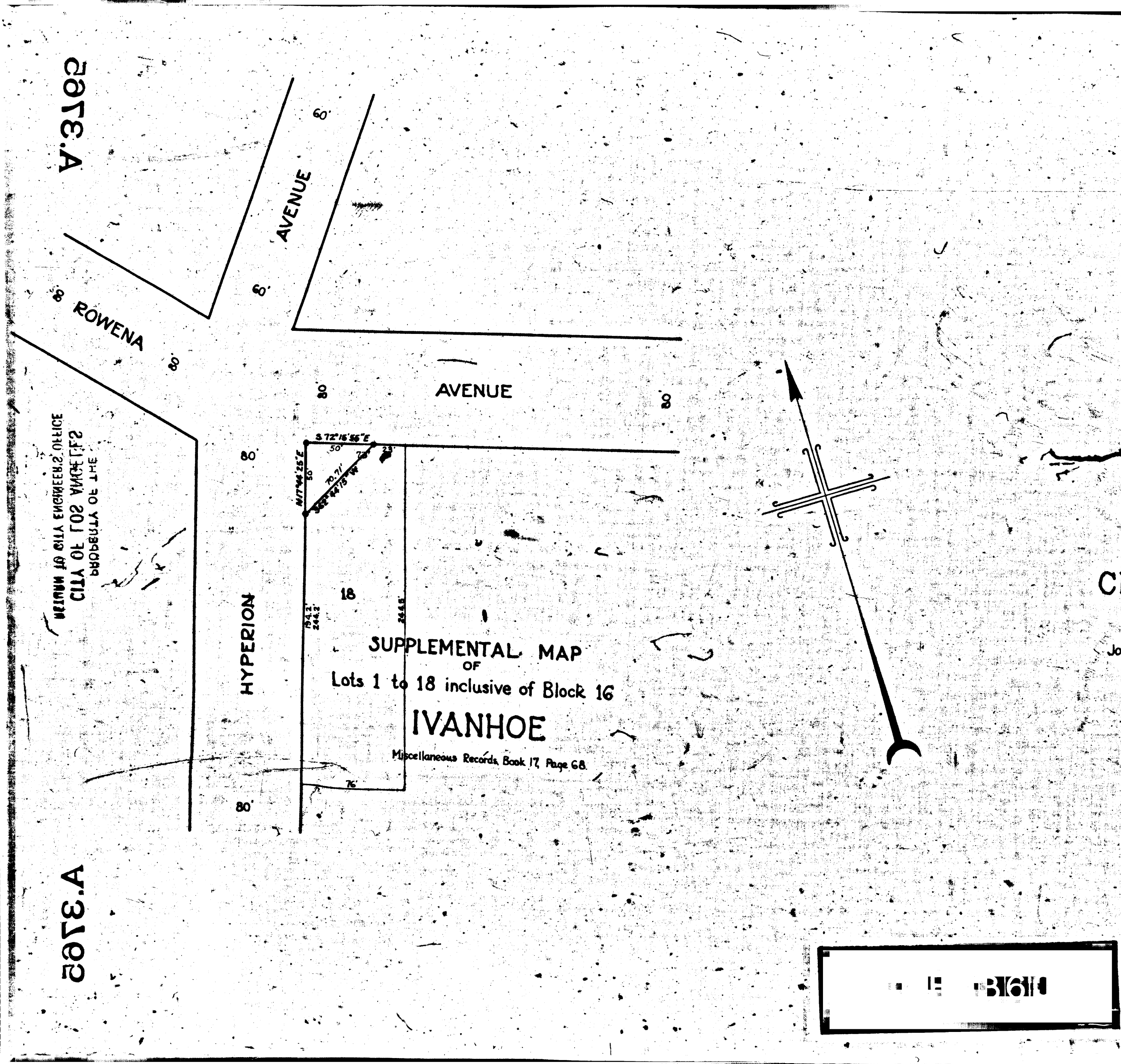
2073.A

2073.A

2073.A

RETURN TO CITY ENGINEER'S OFFICE  
CITY OF LOS ANGELES  
PROPERTY OF THE

A.3765



**MAP**  
 SHOWING LAND TO BE CONDEMNED  
 FOR PUBLIC STREET PURPOSES  
 AT THE  
 SOUTHEASTERLY CORNER OF  
**HYPERION AVENUE**  
 AND  
**ROWENA AVENUE**  
 IN THE  
**CITY OF LOS ANGELES CAL.**

IN ACCORDANCE WITH ORDINANCE NO. 54206.  
 JOHN C. SHAW, CITY ENGINEER. APRIL, 1926.  
 Scale - 1 inch = 50 feet.

NOTE:  
 Land to be condemned shown colored red.

**A.3765**  
*Superior Court Case No. 195007  
 Suit for Condemnation  
 Filed April 28th 1926  
 City of Los Angeles, Plaintiff  
 Vs.  
 Thomas William Wilson et al., Def.  
 Pending Apr. 13th 1927  
 Final judgment in favor of Plt'ff. as  
 per map, rendered Dec. 12th, 1927.*

D:65-6, O.R. 7092-125  
 ALSO  
 D:65-146, O.R. 7114-39

Sh. 40

