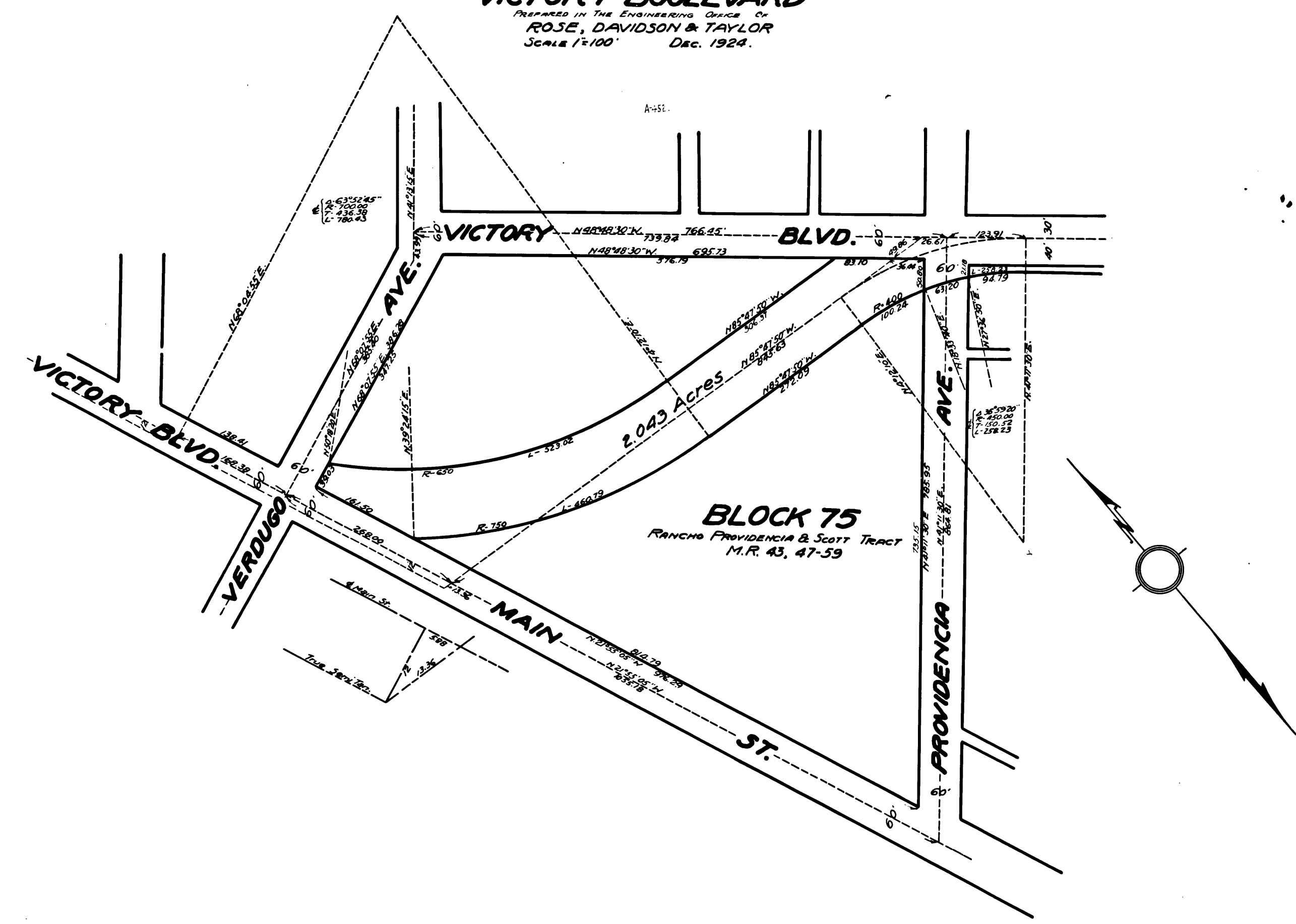


MAP SHOWING PORTION
To Be Condemned And Known As
VICTORY BOULEVARD
Prepared in the Engineering Office of
ROSE, DAVIDSON & TAYLOR
Scale 1"=100' Dec. 1924.



Superior Court Case No. 164475
 Suit for Condemnation
 Filed Mar. 5th 1925
 City of Burbank, Plaintiff
 Vs.
 Herman F. Haverland & al., Def.
 Final judgment in favor of Plaintiff
 as per map, rendered Apr. 2nd 1926
 Judg. Bk. 662-214

Also decreed by D:53-77 C.R. 46. 11-226

See D:59-145. Res. 887 & M.B. 126-35 for Correction

EXHIBIT "C"

C.F. 1364 -

