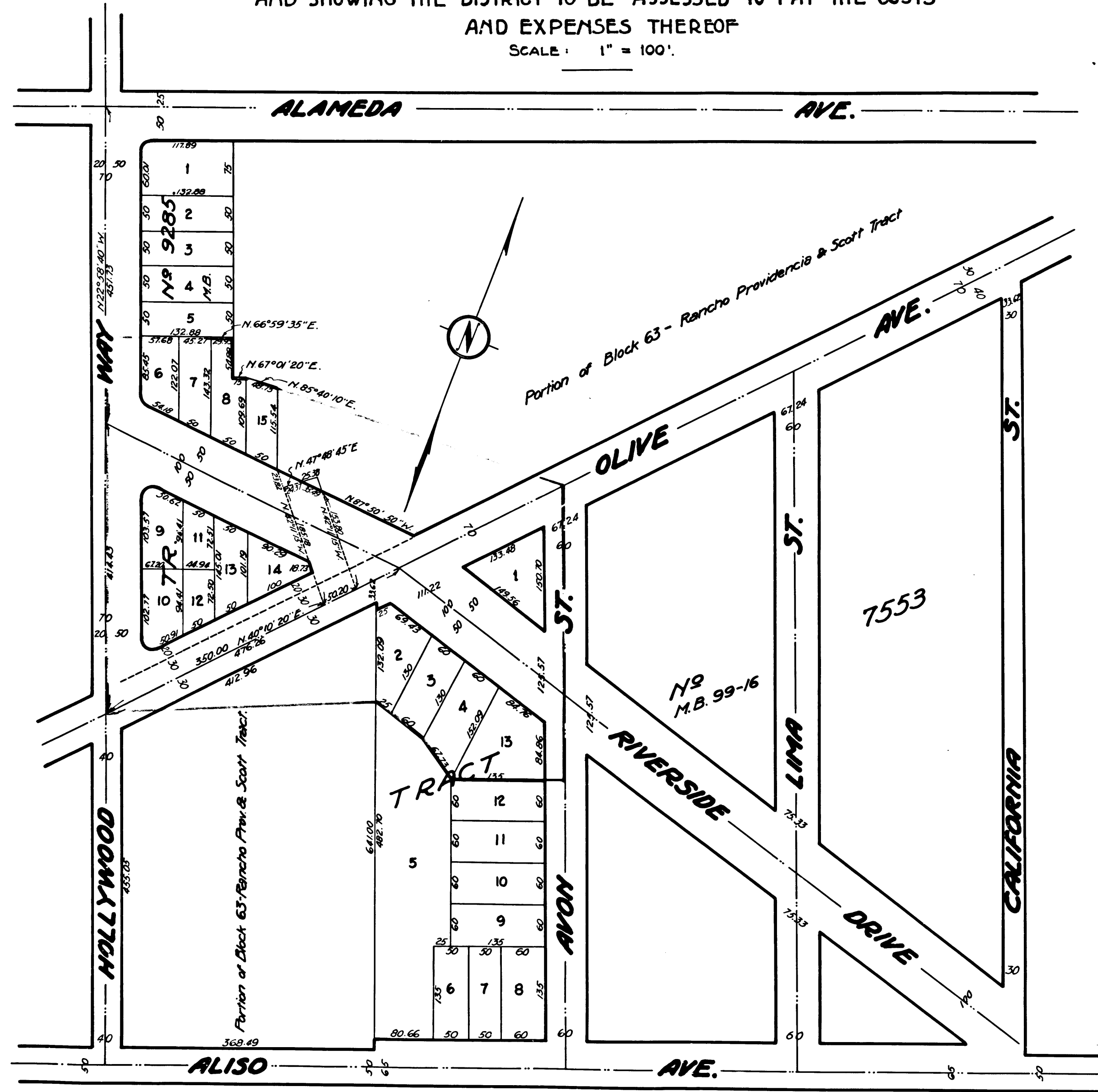


— MAP —
 SHOWING LAND TO BE CONDEMNED FOR
 THE OPENING AND LAYING OUT OF
 — RIVERSIDE DRIVE —
 FROM THE EASTERLY LINE OF HOLLYWOOD WAY TO THE NORTHERLY LINE
 OF OLIVE AVENUE ALL LYING WITHIN THE CITY OF BURBANK
 AND SHOWING THE DISTRICT TO BE ASSESSED TO PAY THE COSTS
 AND EXPENSES THEREOF
 SCALE: 1" = 100'.



Superior Court Case No. 196358
 Suit for Condemnation
 Filed May 15th 1926.
 City of Burbank, Plaintiff
 Vs.
 J. W. Parish et al, Defendants
 Final judgment in favor of Pltff.
 as per map, rendered Jan. 25, 1927
 Judg. Bk. 629-367

C.F. 1365 -