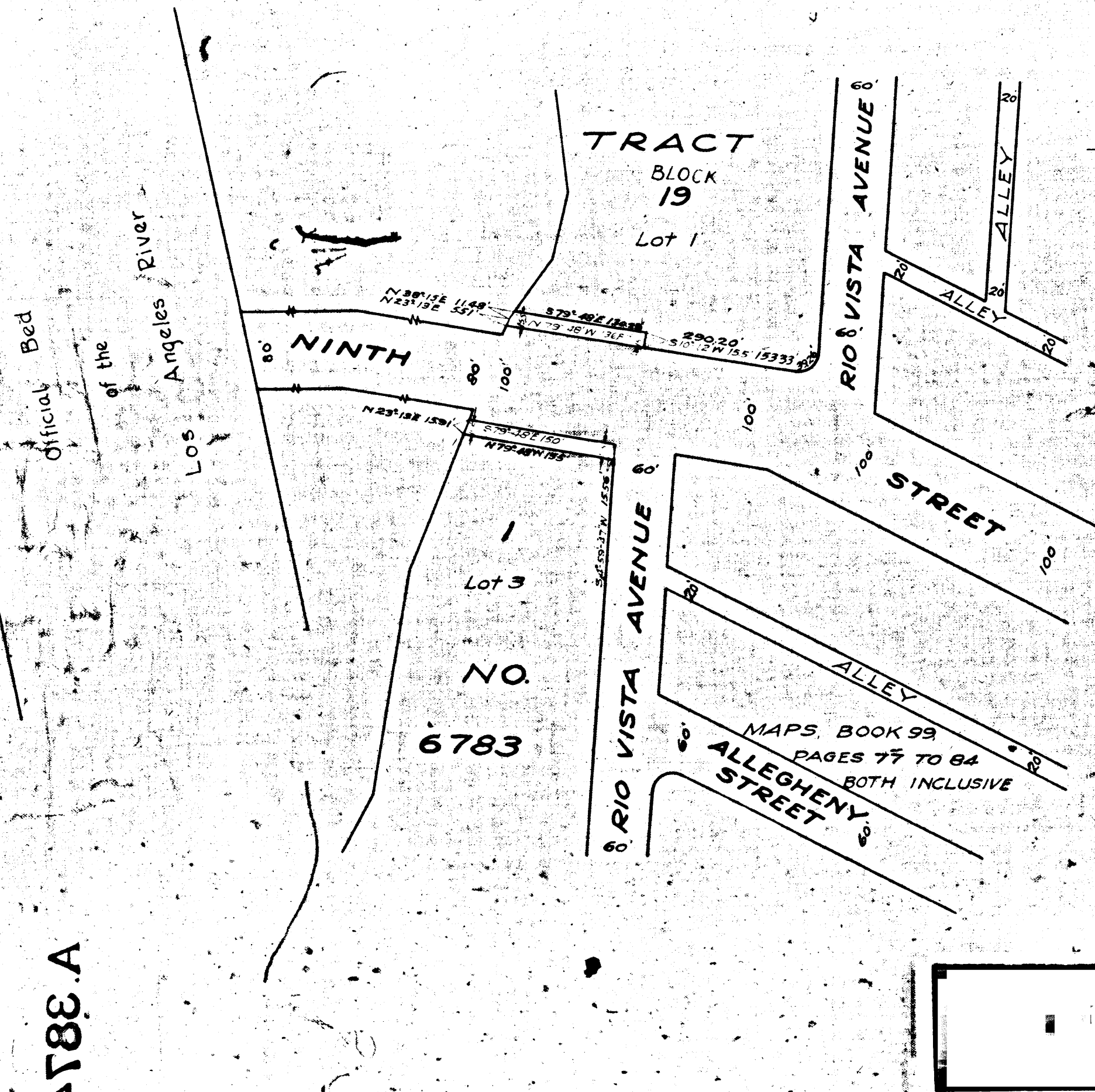


4788 A

4788 A

4788 A

4788 A



MAP
 SHOWING LAND TO BE CONDEMNED
 FOR THE WIDENING OF
NINTH STREET
 BETWEEN
RIO VISTA AVENUE
 AND
THE OFFICIAL BED
 OF
THE LOS ANGELES RIVER
 IN THE
CITY OF LOS ANGELES CALIFORNIA
 IN ACCORDANCE WITH ORDINANCE NO 54276
 JOHN C. SHAW CITY ENGINEER, JUNE 1926
 SCALE 1 INCH = 100 FEET
 Note: Land to be condemned shown colored red.
 Ninth St. changed to Olympic Blvd. - Ord. 74919.

Superior Court Case No. 198410
 Suit for Condemnation
 Filed June 10th 1926
 City of Los Angeles, Plaintiff
 Vs.
 California Trust Co. et al, Def.

Interlocutory judgment as per map,
 rendered Dec. 3rd 1927
 Judg. Bk. 632-178
 Pending Apr. 7th 1927
 Final judgment in favor of Pltff, as per
 map, rendered June 18, 1927.

D: 61-8 O.R. 6742-76

Sht. 27

(1) ONE FOR ARCHIVE
 (2) ONE FOR DEPT. OF PUBLIC WORKS