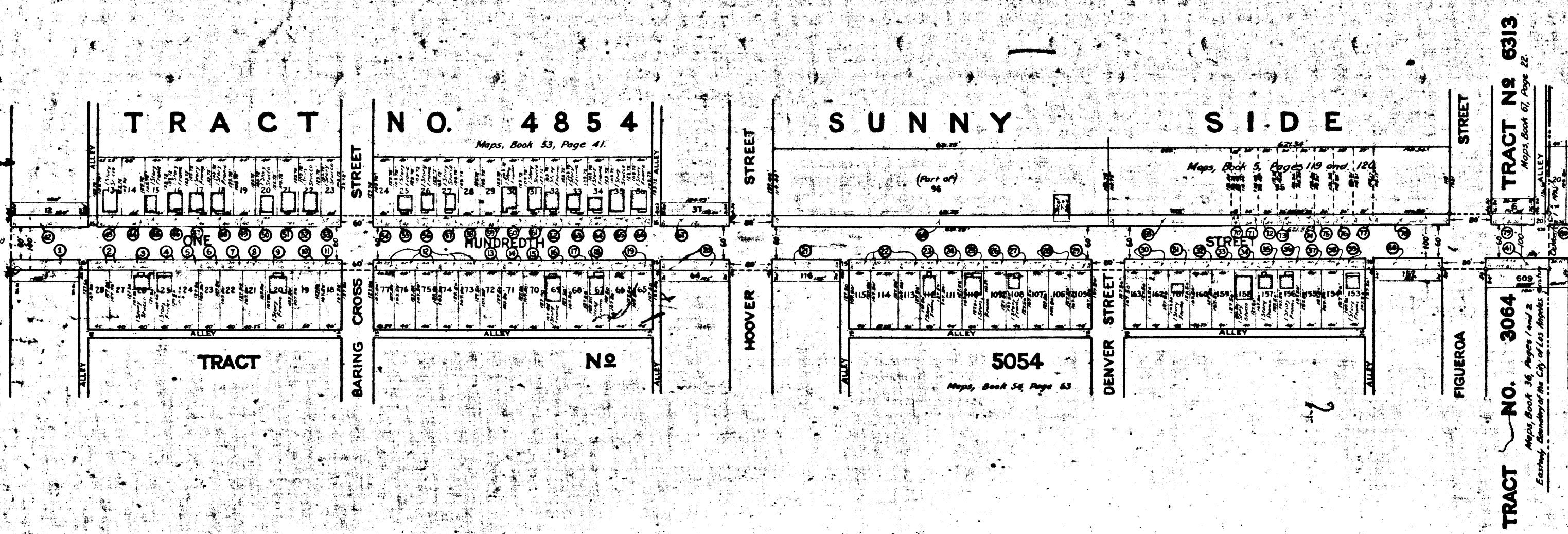


8718.A

8718.A



MAP
 SHOWING THE LAND TO BE CONDEMNED
 FOR THE WIDENING OF
ONE HUNDREDTH STREET
 BETWEEN
 THE EASTERLY BOUNDARY OF THE CITY OF LOS ANGELES
 AND
 VERMONT AVENUE
 IN THE
 CITY OF LOS ANGELES, CALIF.

In accordance with Ordinances Nos. 53432
 and 54230
 John C. Shaw, City Engineer, April 1926.
 Scale 1" = 100'

Sht 24
 Sht 26
 Sht 27
 Superior Court Case No. 198789
 Suit for Condemnation
 Filed June 13th 1926
 City of Los Angeles, Plaintiff
 vs.
 J.C. Freeman et al., Def.

Note: Land to be condemned shown colored red.
 Dotted lines and dimensions show property
 holdings in those cases where they differ from
 recorded subdivisions.
 The figures in circles (O) indicate the parcel
 numbers as set forth in Paragraph VIII of the
 complaint.
 100th Street changed to Century Blvd.-Ord. 69381.

Pending Apr. 1, 1927
 Interlocutory decree rendered Dec. 27,
 1927 - Judg. Bk. 646-332
 Final judgment in favor of Plaintiff as
 per map, rendered Sept. 18th, 1930.

A.3778

D:78-263, O. 10341-65.

